

## SSB Polyclonal Antibody

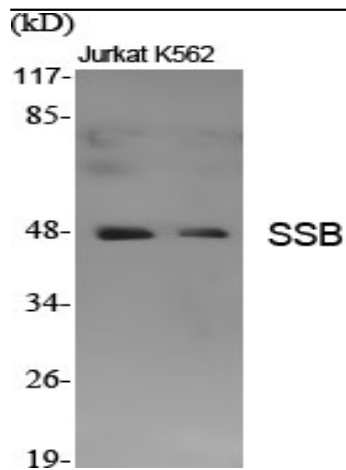
<b>Catalog No :</b>	YT4425
<b>Reactivity :</b>	Human;Rat;Mouse;
<b>Applications :</b>	WB;IHC;IF;ELISA
<b>Target :</b>	SSB
<b>Fields :</b>	>>Systemic lupus erythematosus
<b>Gene Name :</b>	SSB
<b>Protein Name :</b>	Lupus La protein
<b>Human Gene Id :</b>	6741
<b>Human Swiss Prot No :</b>	P05455
<b>Mouse Swiss Prot No :</b>	P32067
<b>Immunogen :</b>	The antiserum was produced against synthesized peptide derived from human SSB. AA range:341-390
<b>Specificity :</b>	SSB Polyclonal Antibody detects endogenous levels of SSB protein.
<b>Formulation :</b>	Liquid in PBS containing 50% glycerol, 0.5% BSA and 0.02% sodium azide.
<b>Source :</b>	Polyclonal, Rabbit,IgG
<b>Dilution :</b>	WB 1:500 - 1:2000. IHC 1:100 - 1:300. ELISA: 1:40000.. IF 1:50-200
<b>Purification :</b>	The antibody was affinity-purified from rabbit antiserum by affinity-chromatography using epitope-specific immunogen.
<b>Concentration :</b>	1 mg/ml
<b>Storage Stability :</b>	-15°C to -25°C/1 year(Do not lower than -25°C)

---

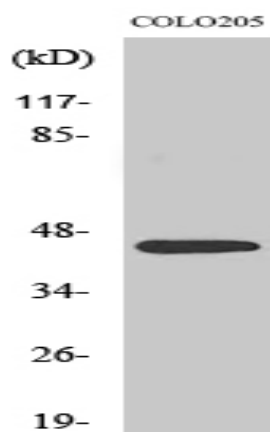
<b>Observed Band :</b>	47kD
<b>Cell Pathway :</b>	Systemic lupus erythematosus;
<b>Background :</b>	<p>Sjogren syndrome antigen B(SSB) Homo sapiens The protein encoded by this gene is involved in diverse aspects of RNA metabolism, including binding and protecting poly(U) termini of nascent RNA polymerase III transcripts from exonuclease digestion, processing 5' and 3' ends of pre-tRNA precursors, acting as an RNA chaperone, and binding viral RNAs associated with hepatitis C virus. Autoantibodies reacting with this protein are found in the sera of patients with Sjogren syndrome and systemic lupus erythematosus. Alternative promoter usage results in two different transcript variants which encode the same protein. [provided by RefSeq, Jun 2014],</p>
<b>Function :</b>	<p>disease:Sera from patients with systemic lupus erythematosus (SLE) often contain antibodies that react with the normal cellular La protein as if this antigen was foreign.,function:La protein plays a role in the transcription of RNA polymerase III. It is most probably a transcription termination factor. Binds to the 3' termini of virtually all nascent polymerase III transcripts. It is associated with precursor forms of RNA polymerase III transcripts including tRNA and 4.5S, 5S, 7S, and 7-2 RNAs.,PTM:Phosphorylated. The phosphorylation sites are at the C-terminal part of the protein.,PTM:The N-terminus is blocked.,similarity:Contains 1 HTH La-type RNA-binding domain.,similarity:Contains 1 RRM (RNA recognition motif) domain.,subunit:Interacts with DDX15. May interact with RUFY1.,</p>
<b>Subcellular Location :</b>	Nucleus .
<b>Expression :</b>	Epithelium,Liver,Placenta,Skeletal muscle,
<b>Sort :</b>	16633
<b>No4 :</b>	1
<b>Host :</b>	Rabbit
<b>Modifications :</b>	Unmodified

---

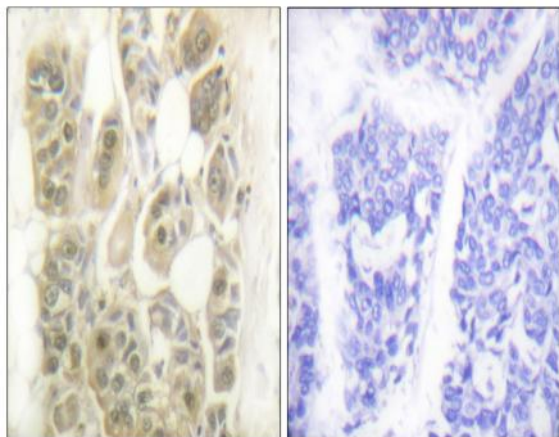
## Products Images



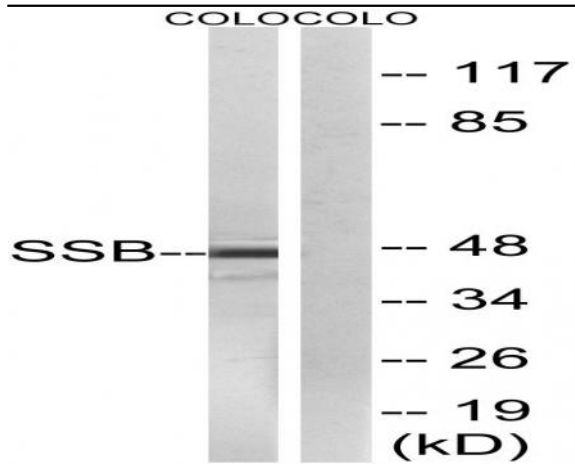
Western Blot analysis of various cells using SSB Polyclonal Antibody



Western Blot analysis of COLO205 cells using SSB Polyclonal Antibody



Immunohistochemistry analysis of paraffin-embedded human breast carcinoma tissue, using SSB Antibody. The picture on the right is blocked with the synthesized peptide.



Western blot analysis of lysates from COLO cells, using SSB Antibody. The lane on the right is blocked with the synthesized peptide.