

## Tip5 Polyclonal Antibody

<b>Catalog No :</b>	YT4663
<b>Reactivity :</b>	Human;Rat;Mouse;
<b>Applications :</b>	WB;IHC
<b>Target :</b>	Tip5
<b>Gene Name :</b>	BAZ2A
<b>Protein Name :</b>	Bromodomain adjacent to zinc finger domain protein 2A
<b>Human Gene Id :</b>	605682
<b>Human Swiss Prot No :</b>	Q9UIF9
<b>Mouse Swiss Prot No :</b>	Q91YE5
<b>Immunogen :</b>	The antiserum was produced against synthesized peptide derived from human BAZ2A. AA range:1281-1330
<b>Specificity :</b>	Tip5 Polyclonal Antibody detects endogenous levels of Tip5 protein.
<b>Formulation :</b>	Liquid in PBS containing 50% glycerol, 0.5% BSA and 0.02% sodium azide.
<b>Source :</b>	Polyclonal, Rabbit,IgG
<b>Dilution :</b>	WB 1:500-2000;IHC 1:50-300
<b>Purification :</b>	The antibody was affinity-purified from rabbit antiserum by affinity-chromatography using epitope-specific immunogen.
<b>Concentration :</b>	1 mg/ml
<b>Storage Stability :</b>	-15°C to -25°C/1 year(Do not lower than -25°C)
<b>Observed Band :</b>	210kD

**Background :** function:May play a role in transcriptional regulation interacting with ISWI. May serve a specific role in maintaining or altering the chromatin structure of the rDNA locus.,PTM:Phosphorylated upon DNA damage, probably by ATM or ATR.,sequence caution:Contaminating sequence. Potential poly-A sequence.,similarity:Belongs to the WAL family.,similarity:Contains 1 bromo domain.,similarity:Contains 1 DDT domain.,similarity:Contains 1 MBD (methyl-CpG-binding) domain.,similarity:Contains 1 PHD-type zinc finger.,similarity:Contains 4 A.T hook DNA-binding domains.,subcellular location:Colocalizes with the basal RNA polymerase I transcription factor UBF in the nucleolus.,subunit:Together with SMARCA5, it forms a complex termed NoRC (nucleolar remodeling complex).,tissue specificity:Expressed at moderate levels in most tissues analyzed, including heart, brain, placenta, lung, skeletal muscle, kidney and pancreas.,

**Function :** function:May play a role in transcriptional regulation interacting with ISWI. May serve a specific role in maintaining or altering the chromatin structure of the rDNA locus.,PTM:Phosphorylated upon DNA damage, probably by ATM or ATR.,sequence caution:Contaminating sequence. Potential poly-A sequence.,similarity:Belongs to the WAL family.,similarity:Contains 1 bromo domain.,similarity:Contains 1 DDT domain.,similarity:Contains 1 MBD (methyl-CpG-binding) domain.,similarity:Contains 1 PHD-type zinc finger.,similarity:Contains 4 A.T hook DNA-binding domains.,subcellular location:Colocalizes with the basal RNA polymerase I transcription factor UBF in the nucleolus.,subunit:Together with SMARCA5, it forms a complex termed NoRC (nucleolar remodeling complex).,tissue specificity:Expressed at moderate levels in most tissues analyzed, including heart, brain, placenta, lung, skeletal muscle, kidney

**Subcellular Location :** Nucleus, nucleolus . Colocalizes with the basal RNA polymerase I transcription factor UBF in the nucleolus. .

**Expression :** Expressed at moderate levels in most tissues analyzed, including heart, brain, placenta, lung, skeletal muscle, kidney and pancreas.

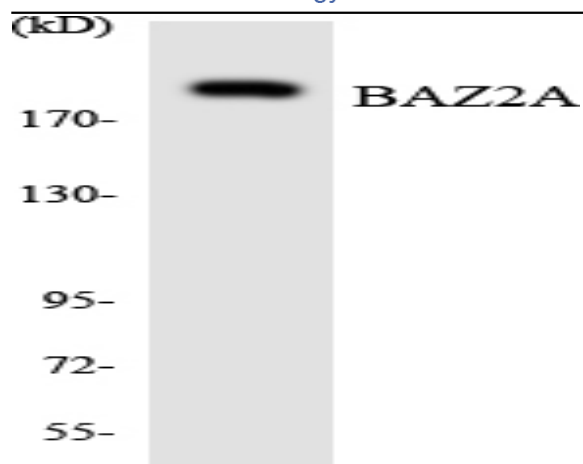
**Sort :** 17172

**No4 :** 1

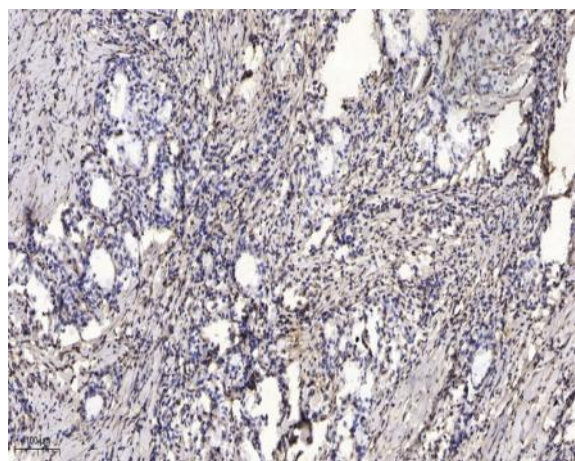
**Host :** Rabbit

**Modifications :** Unmodified

**Products Images**



Western blot analysis of the lysates from HeLa cells using BAZ2A antibody.



Immunohistochemical analysis of paraffin-embedded human Gastric adenocarcinoma. 1, Antibody was diluted at 1:200(4° overnight). 2, Tris-EDTA,pH9.0 was used for antigen retrieval. 3,Secondary antibody was diluted at 1:200(room temperature, 45min).