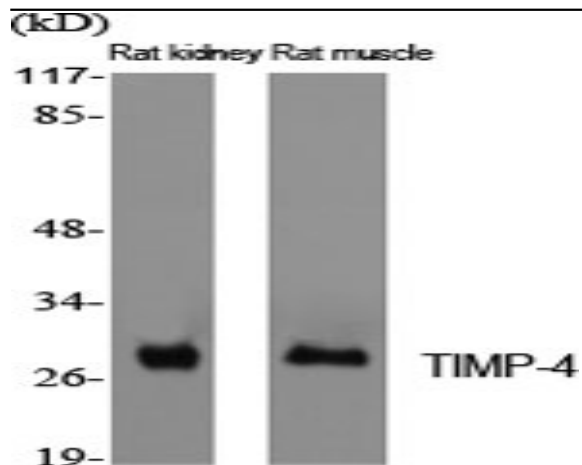


TIMP-4 Polyclonal Antibody

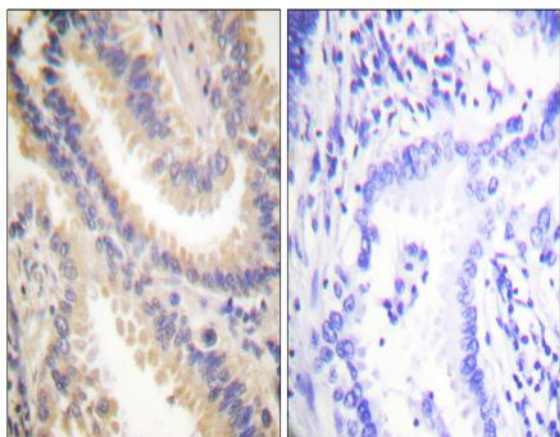
Catalog No :	YT4661
Reactivity :	Human;Mouse;Rat
Applications :	WB;IHC;IF;ELISA
Target :	TIMP-4
Gene Name :	TIMP4
Protein Name :	Metalloproteinase inhibitor 4
Human Gene Id :	7079
Human Swiss Prot No :	Q99727
Mouse Gene Id :	110595
Mouse Swiss Prot No :	Q9JHB3
Rat Gene Id :	680130
Rat Swiss Prot No :	P81556
Immunogen :	The antiserum was produced against synthesized peptide derived from human TIMP4. AA range:175-224
Specificity :	TIMP-4 Polyclonal Antibody detects endogenous levels of TIMP-4 protein.
Formulation :	Liquid in PBS containing 50% glycerol, 0.5% BSA and 0.02% sodium azide.
Source :	Polyclonal, Rabbit,IgG
Dilution :	WB 1:500 - 1:2000. IHC 1:100 - 1:300. ELISA: 1:20000.. IF 1:50-200
Purification :	The antibody was affinity-purified from rabbit antiserum by affinity-chromatography using epitope-specific immunogen.

Concentration :	1 mg/ml
Storage Stability :	-15°C to -25°C/1 year(Do not lower than -25°C)
Observed Band :	26kD
Background :	This gene belongs to the TIMP gene family. The proteins encoded by this gene family are inhibitors of the matrix metalloproteinases, a group of peptidases involved in degradation of the extracellular matrix. The secreted, netrin domain-containing protein encoded by this gene is involved in regulation of platelet aggregation and recruitment and may play role in hormonal regulation and endometrial tissue remodeling. [provided by RefSeq, Jul 2008],
Function :	function:Complexes with metalloproteinases (such as collagenases) and irreversibly inactivates them. Known to act on MMP-1, MMP-2, MMP-3, MMP-7 and MMP-9.,similarity:Belongs to the protease inhibitor I35 (TIMP) family.,similarity:Contains 1 NTR domain.,tissue specificity:Abundant in heart and present at low levels in many other tissues.,
Subcellular Location :	Secreted.
Expression :	Abundant in heart and present at low levels in many other tissues.
Sort :	17167
No4 :	1
Host :	Rabbit
Modifications :	Unmodified

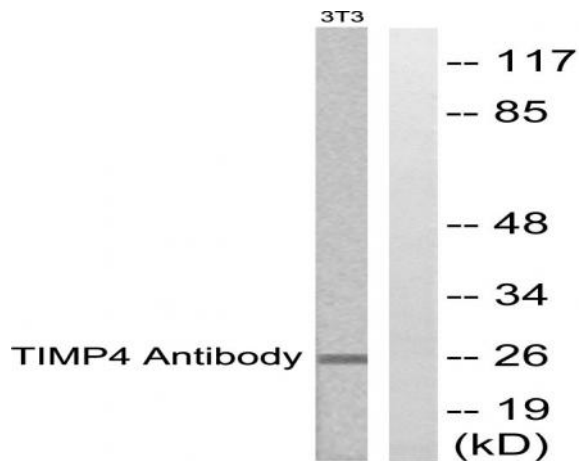
Products Images



Western Blot analysis of various cells using TIMP-4 Polyclonal Antibody diluted at 1:2000. Secondary antibody(catalog#:RS0002) was diluted at 1:20000



Immunohistochemistry analysis of paraffin-embedded human lung carcinoma tissue, using TIMP4 Antibody. The picture on the right is blocked with the synthesized peptide.



Western blot analysis of lysates from NIH/3T3 cells, using TIMP4 Antibody. The lane on the right is blocked with the synthesized peptide.