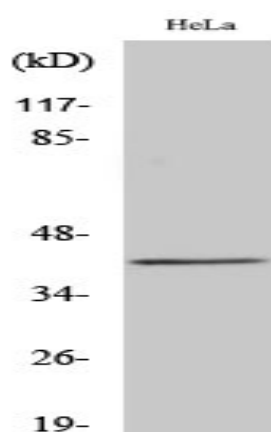


SR-1E Polyclonal Antibody

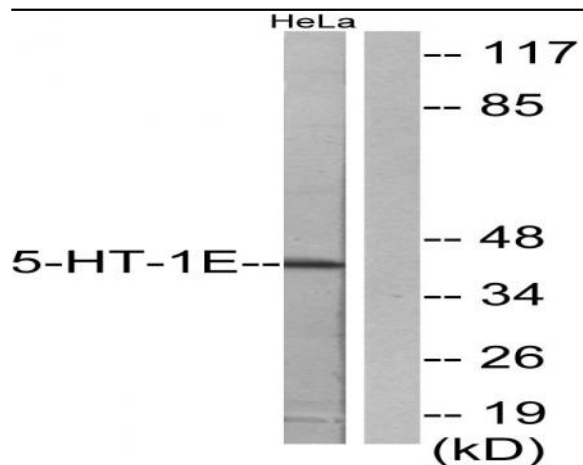
Catalog No :	YT4394
Reactivity :	Human
Applications :	IF;ELISA;IHC
Target :	SR-1E
Fields :	>>cAMP signaling pathway;>>Neuroactive ligand-receptor interaction;>>Serotonergic synapse;>>Taste transduction
Gene Name :	HTR1E
Protein Name :	5-hydroxytryptamine receptor 1E
Human Gene Id :	3354
Human Swiss Prot No :	P28566
Immunogen :	The antiserum was produced against synthesized peptide derived from human 5-HT-1E. AA range:101-150
Specificity :	SR-1E Polyclonal Antibody detects endogenous levels of SR-1E protein.
Formulation :	Liquid in PBS containing 50% glycerol, 0.5% BSA and 0.02% sodium azide.
Source :	Polyclonal, Rabbit,IgG
Dilution :	IF ICC 1:50-300; ELISA 1:2000-20000; IHC 1:50-200
Purification :	The antibody was affinity-purified from rabbit antiserum by affinity-chromatography using epitope-specific immunogen.
Concentration :	1 mg/ml
Storage Stability :	-15°C to -25°C/1 year(Do not lower than -25°C)
Observed Band :	42kD

Cell Pathway :	Neuroactive ligand-receptor interaction;
Background :	function:This is one of the several different receptors for 5-hydroxytryptamine (serotonin), a biogenic hormone that functions as a neurotransmitter, a hormone, and a mitogen. The activity of this receptor is mediated by G proteins that inhibit adenylate cyclase activity.,similarity:Belongs to the G-protein coupled receptor 1 family.,
Function :	function:This is one of the several different receptors for 5-hydroxytryptamine (serotonin), a biogenic hormone that functions as a neurotransmitter, a hormone, and a mitogen. The activity of this receptor is mediated by G proteins that inhibit adenylate cyclase activity.,similarity:Belongs to the G-protein coupled receptor 1 family.,
Subcellular Location :	Cell membrane ; Multi-pass membrane protein .
Expression :	Detected in brain.
Sort :	16576
No4 :	1
Host :	Rabbit
Modifications :	Unmodified

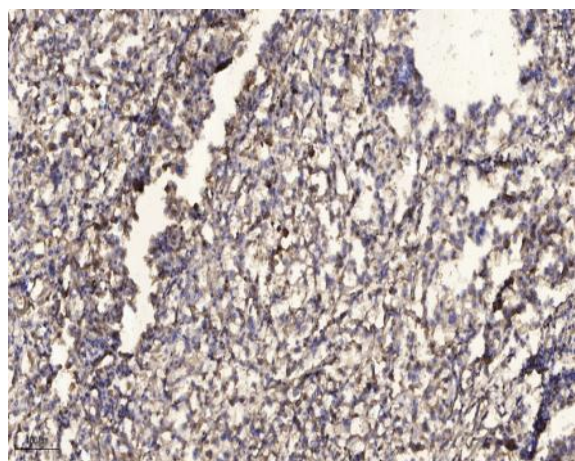
Products Images



Western Blot analysis of various cells using SR-1E Polyclonal Antibody



Western blot analysis of lysates from HeLa cells, using 5-HT-1E Antibody. The lane on the right is blocked with the synthesized peptide.



Immunohistochemical analysis of paraffin-embedded human Squamous cell carcinoma of lung. 1, Antibody was diluted at 1:200(4° overnight). 2, Tris-EDTA,pH9.0 was used for antigen retrieval. 3,Secondary antibody was diluted at 1:200(room temperature, 45min).