

## SR-1A Polyclonal Antibody

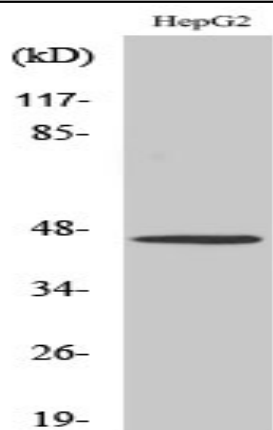
<b>Catalog No :</b>	YT4391
<b>Reactivity :</b>	Human;Mouse;Rat
<b>Applications :</b>	WB;IHC;IF;ELISA
<b>Target :</b>	SR-1A
<b>Fields :</b>	>>cAMP signaling pathway;>>Neuroactive ligand-receptor interaction;>>Serotonergic synapse;>>Taste transduction
<b>Gene Name :</b>	HTR1A
<b>Protein Name :</b>	5-hydroxytryptamine receptor 1A
<b>Human Gene Id :</b>	3350
<b>Human Swiss Prot No :</b>	P08908
<b>Mouse Gene Id :</b>	15550
<b>Mouse Swiss Prot No :</b>	Q64264
<b>Rat Gene Id :</b>	24473
<b>Rat Swiss Prot No :</b>	P19327
<b>Immunogen :</b>	The antiserum was produced against synthesized peptide derived from human 5-HT-1A. AA range:291-340
<b>Specificity :</b>	SR-1A Polyclonal Antibody detects endogenous levels of SR-1A protein.
<b>Formulation :</b>	Liquid in PBS containing 50% glycerol, 0.5% BSA and 0.02% sodium azide.
<b>Source :</b>	Polyclonal, Rabbit,IgG
<b>Dilution :</b>	WB 1:500 - 1:2000. IHC 1:100 - 1:300. IF 1:200 - 1:1000. ELISA: 1:20000. Not yet tested in other applications.

---

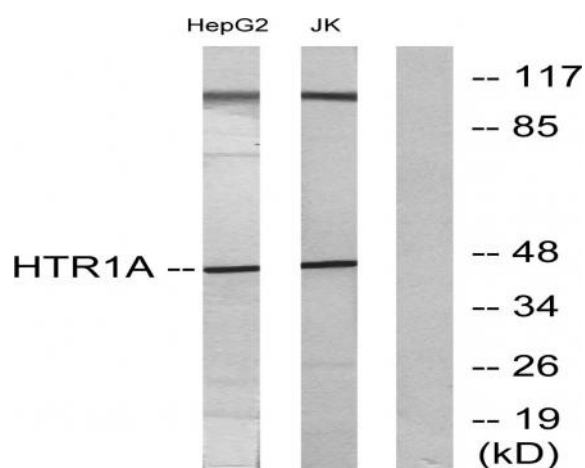
<b>Purification :</b>	The antibody was affinity-purified from rabbit antiserum by affinity-chromatography using epitope-specific immunogen.
<b>Concentration :</b>	1 mg/ml
<b>Storage Stability :</b>	-15°C to -25°C/1 year(Do not lower than -25°C)
<b>Observed Band :</b>	46kD
<b>Cell Pathway :</b>	Neuroactive ligand-receptor interaction;
<b>Background :</b>	This gene encodes a G protein-coupled receptor for 5-hydroxytryptamine (serotonin), and belongs to the 5-hydroxytryptamine receptor subfamily. Serotonin has been implicated in a number of physiologic processes and pathologic conditions. Inactivation of this gene in mice results in behavior consistent with an increased anxiety and stress response. Mutation in the promoter of this gene has been associated with menstrual cycle-dependent periodic fevers. [provided by RefSeq, Jun 2012],
<b>Function :</b>	function:This is one of the several different receptors for 5-hydroxytryptamine (serotonin), a biogenic hormone that functions as a neurotransmitter, a hormone, and a mitogen. The activity of this receptor is mediated by G proteins that inhibit adenylate cyclase activity.,similarity:Belongs to the G-protein coupled receptor 1 family.,
<b>Subcellular Location :</b>	Cell membrane ; Multi-pass membrane protein . Cell projection, dendrite .
<b>Expression :</b>	Detected in lymph nodes, thymus and spleen. Detected in activated T-cells, but not in resting T-cells.
<b>Tag :</b>	hot
<b>Sort :</b>	16572
<b>No4 :</b>	1
<b>Host :</b>	Rabbit
<b>Modifications :</b>	Unmodified

---

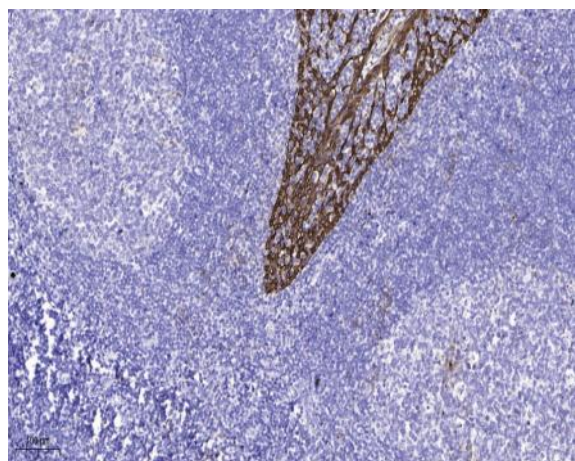
**Products Images**



Western Blot analysis of various cells using SR-1A Polyclonal Antibody diluted at 1:500



Western blot analysis of lysates from HepG2 and Jurkat cells, using 5-HT-1A Antibody. The lane on the right is blocked with the synthesized peptide.



Immunohistochemical analysis of paraffin-embedded human tonsil. 1, Antibody was diluted at 1:200(4° overnight). 2, Tris-EDTA,pH9.0 was used for antigen retrieval. 3,Secondary antibody was diluted at 1:200(room temperature, 45min).