

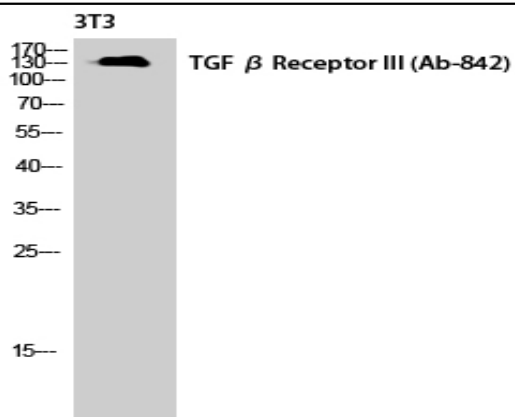
## TGFβ RIII Polyclonal Antibody

<b>Catalog No :</b>	YT4630
<b>Reactivity :</b>	Human;Mouse;Rat
<b>Applications :</b>	WB;IF;ELISA
<b>Target :</b>	TGFβ RIII
<b>Gene Name :</b>	TGFBR3
<b>Protein Name :</b>	Transforming growth factor beta receptor type 3
<b>Human Gene Id :</b>	7049
<b>Human Swiss Prot No :</b>	Q03167
<b>Mouse Gene Id :</b>	21814
<b>Mouse Swiss Prot No :</b>	O88393
<b>Rat Gene Id :</b>	29610
<b>Rat Swiss Prot No :</b>	P26342
<b>Immunogen :</b>	The antiserum was produced against synthesized peptide derived from human TGF beta Receptor III. AA range:801-850
<b>Specificity :</b>	TGFβ RIII Polyclonal Antibody detects endogenous levels of TGFβ RIII protein.
<b>Formulation :</b>	Liquid in PBS containing 50% glycerol, 0.5% BSA and 0.02% sodium azide.
<b>Source :</b>	Polyclonal, Rabbit,IgG
<b>Dilution :</b>	WB 1:500-2000. ELISA: 1:5000. IF 1:50-200
<b>Purification :</b>	The antibody was affinity-purified from rabbit antiserum by affinity-chromatography using epitope-specific immunogen.

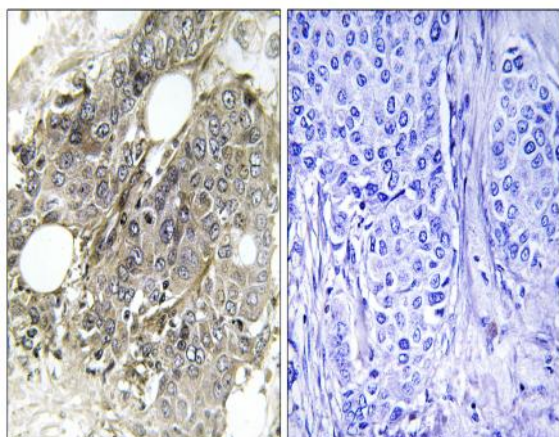
<b>Concentration :</b>	1 mg/ml
<b>Storage Stability :</b>	-15°C to -25°C/1 year(Do not lower than -25°C)
<b>Molecularweight :</b>	93kD
<b>Background :</b>	This locus encodes the transforming growth factor (TGF)-beta type III receptor. The encoded receptor is a membrane proteoglycan that often functions as a co-receptor with other TGF-beta receptor superfamily members. Ectodomain shedding produces soluble TGFBR3, which may inhibit TGFB signaling. Decreased expression of this receptor has been observed in various cancers. Alternatively spliced transcript variants encoding different isoforms have been identified for this gene.[provided by RefSeq, Sep 2010],
<b>Function :</b>	function: Binds to TGF-beta. Could be involved in capturing and retaining TGF-beta for presentation to the signaling receptors.,PTM: Extensively modified by glycosaminoglycan groups (GAG).,similarity: Contains 1 ZP domain.,subcellular location: Exists both as a membrane-bound form and as soluble form in serum and in the extracellular matrix.,subunit: Interacts with TCTEX1D4.,
<b>Subcellular Location :</b>	Secreted. Secreted, extracellular space. Cell membrane ; Single-pass type I membrane protein . Exists both as a membrane-bound form and as soluble form in serum and in the extracellular matrix.
<b>Expression :</b>	Blood,Brain,Placenta,Tongue,
<b>Tag :</b>	orthogonal
<b>Sort :</b>	17084
<b>No4 :</b>	1
<b>Host :</b>	Rabbit
<b>Modifications :</b>	Unmodified

---

## Products Images



Western Blot analysis of NIH-3T3 cells using TGF $\beta$  RIII  
Polyclonal Antibody diluted at 1:1000



Immunohistochemistry analysis of paraffin-embedded human  
breast carcinoma tissue, using TGF beta Receptor III Antibody.  
The picture on the right is blocked with the synthesized peptide.