

## Sp2 Polyclonal Antibody

<b>Catalog No :</b>	YT4375
<b>Reactivity :</b>	Human;Mouse
<b>Applications :</b>	WB;IHC;IF;ELISA
<b>Target :</b>	Sp2
<b>Gene Name :</b>	SP2
<b>Protein Name :</b>	Transcription factor Sp2
<b>Human Gene Id :</b>	6668
<b>Human Swiss Prot No :</b>	Q02086
<b>Mouse Gene Id :</b>	78912
<b>Mouse Swiss Prot No :</b>	Q9D2H6
<b>Immunogen :</b>	The antiserum was produced against synthesized peptide derived from human SP2. AA range:471-520
<b>Specificity :</b>	Sp2 Polyclonal Antibody detects endogenous levels of Sp2 protein.
<b>Formulation :</b>	Liquid in PBS containing 50% glycerol, 0.5% BSA and 0.02% sodium azide.
<b>Source :</b>	Polyclonal, Rabbit,IgG
<b>Dilution :</b>	WB 1:500 - 1:2000. IHC 1:100 - 1:300. ELISA: 1:20000.. IF 1:50-200
<b>Purification :</b>	The antibody was affinity-purified from rabbit antiserum by affinity-chromatography using epitope-specific immunogen.
<b>Concentration :</b>	1 mg/ml
<b>Storage Stability :</b>	-15°C to -25°C/1 year(Do not lower than -25°C)

**Observed Band :** 64kD

**Background :** This gene encodes a member of the Sp subfamily of Sp/XKLF transcription factors. Sp family proteins are sequence-specific DNA-binding proteins characterized by an amino-terminal trans-activation domain and three carboxy-terminal zinc finger motifs. This protein contains the least conserved DNA-binding domain within the Sp subfamily of proteins, and its DNA sequence specificity differs from the other Sp proteins. It localizes primarily within subnuclear foci associated with the nuclear matrix, and can activate or in some cases repress expression from different promoters. [provided by RefSeq, Jul 2008],

**Function :** function: Binds to GC box promoters elements and selectively activates mRNA synthesis from genes that contain functional recognition sites., similarity: Belongs to the Sp1 C2H2-type zinc-finger protein family., similarity: Contains 3 C2H2-type zinc fingers.,

**Subcellular Location :** Nucleus.

**Expression :** Bone marrow, Brain, Lung, Lymph, Spleen,

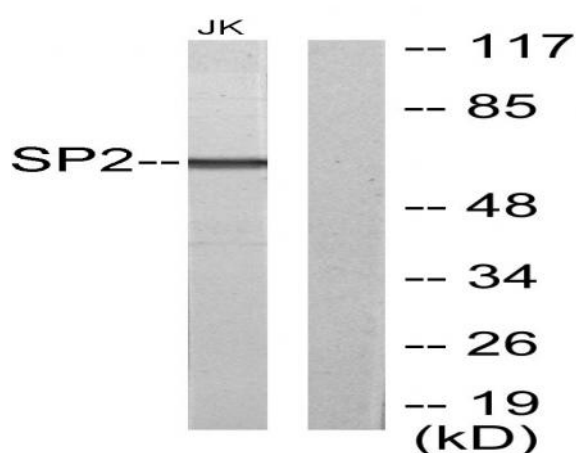
**Sort :** 16531

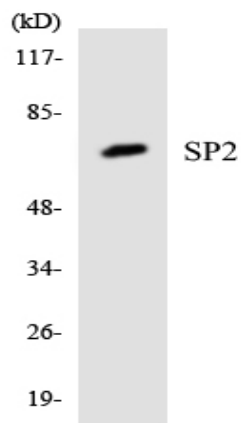
**No4 :** 1

**Host :** Rabbit

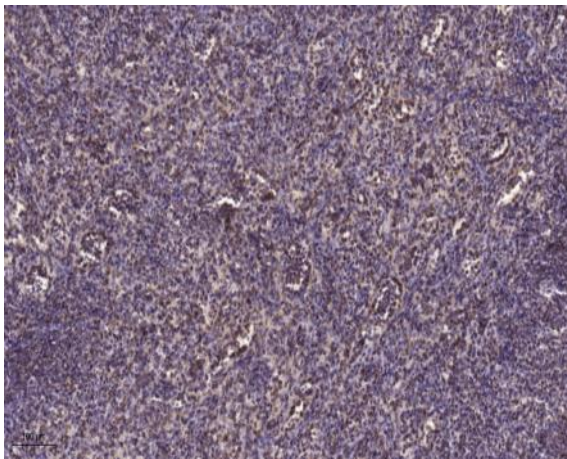
**Modifications :** Unmodified

## Products Images





Western blot analysis of the lysates from 293 cells using SP2 antibody.



Immunohistochemical analysis of paraffin-embedded human spleen. 1, Tris-EDTA, pH9.0 was used for antigen retrieval. 2 Antibody was diluted at 1:200 (4° overnight). 3, Secondary antibody was diluted at 1:200 (room temperature, 45min).