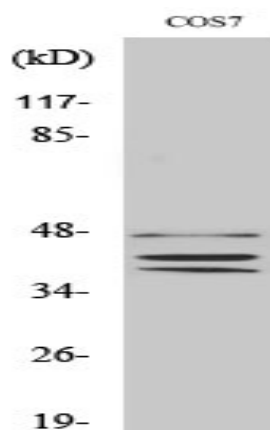


Sox-8/9/17/18 Polyclonal Antibody

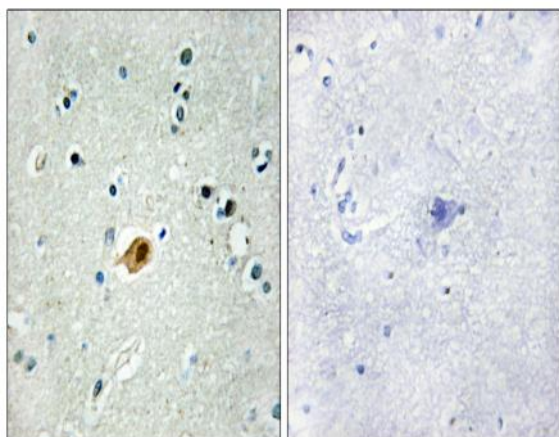
Catalog No :	YT4370
Reactivity :	Human;Mouse;Monkey
Applications :	WB;IHC;IF;ELISA
Target :	Sox-8/9/17/18
Gene Name :	SOX8/9/17/18
Protein Name :	Transcription factor SOX-8/9/17/18
Human Gene Id :	30812/6662/64321/54345
Human Swiss Prot No :	P57073/P48436/Q9H6I2/P35713
Mouse Gene Id :	20681/20682/20671/20672
Immunogen :	The antiserum was produced against synthesized peptide derived from human SOX8/9/17/18. AA range:116-165
Specificity :	Sox-8/9/17/18 Polyclonal Antibody detects endogenous levels of Sox-8/9/17/18 protein.
Formulation :	Liquid in PBS containing 50% glycerol, 0.5% BSA and 0.02% sodium azide.
Source :	Polyclonal, Rabbit,IgG
Dilution :	WB 1:500 - 1:2000. IHC 1:100 - 1:300. ELISA: 1:10000.. IF 1:50-200
Purification :	The antibody was affinity-purified from rabbit antiserum by affinity-chromatography using epitope-specific immunogen.
Concentration :	1 mg/ml
Storage Stability :	-15°C to -25°C/1 year(Do not lower than -25°C)
Observed Band :	47kD

Cell Pathway :	WNT;WNT-T CELL; β -Catenin
Background :	SRY-box 8(SOX8) Homo sapiens This gene encodes a member of the SOX (SRY-related HMG-box) family of transcription factors involved in the regulation of embryonic development and in the determination of the cell fate. The encoded protein may act as a transcriptional activator after forming a protein complex with other proteins. This protein may be involved in brain development and function. Haploinsufficiency for this protein may contribute to the mental retardation found in haemoglobin H-related mental retardation (ART-16 syndrome). [provided by RefSeq, Jul 2008],
Function :	function:May play a role in central nervous system, limb and facial development. May be involved in male sex determination. Binds the consensus motif 5'-[AT][AT]CAA[AT]G-3'. ,similarity:Contains 1 HMG box DNA-binding domain.,
Subcellular Location :	Nucleus .
Expression :	Brain,Spleen,
Tag :	orthogonal
Sort :	16521
No4 :	1
Host :	Rabbit
Modifications :	Unmodified

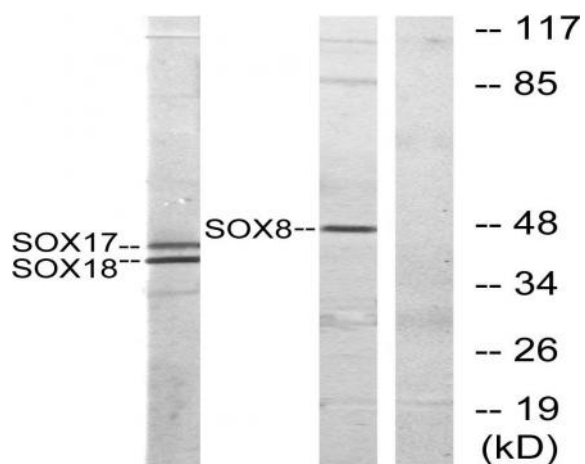
Products Images



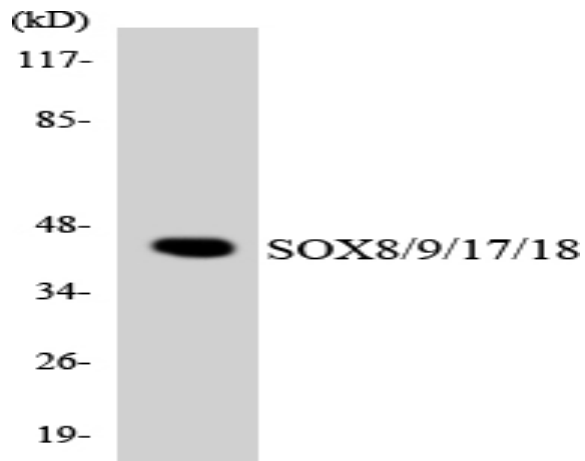
Western Blot analysis of various cells using Sox-8/9/17/18 Polyclonal Antibody cells nucleus extracted by Minute TM Cytoplasmic and Nuclear Fractionation kit (SC-003, Inventbiotech, MN, USA).



Immunohistochemistry analysis of paraffin-embedded human brain tissue, using SOX8/9/17/18 Antibody. The picture on the right is blocked with the synthesized peptide.



Western blot analysis of lysates from COS7 cells, treated with serum 10% 30', using SOX8/9/17/18 Antibody. The lane on the right is blocked with the synthesized peptide.



Western blot analysis of the lysates from HeLa cells using SOX8/9/17/18 antibody.