

Sox-12 Polyclonal Antibody

Catalog No :	YT4368
Reactivity :	Human;Mouse
Applications :	IHC;IF;ELISA
Target :	Sox-12
Gene Name :	SOX12
Protein Name :	Transcription factor SOX-12
Human Gene Id :	6666
Human Swiss Prot No :	O15370
Mouse Gene Id :	20667
Mouse Swiss Prot No :	Q04890
Immunogen :	The antiserum was produced against synthesized peptide derived from human SOX12. AA range:71-120
Specificity :	Sox-12 Polyclonal Antibody detects endogenous levels of Sox-12 protein.
Formulation :	Liquid in PBS containing 50% glycerol, 0.5% BSA and 0.02% sodium azide.
Source :	Polyclonal, Rabbit,IgG
Dilution :	IHC 1:100 - 1:300. ELISA: 1:20000.. IF 1:50-200
Purification :	The antibody was affinity-purified from rabbit antiserum by affinity-chromatography using epitope-specific immunogen.
Concentration :	1 mg/ml
Storage Stability :	-15°C to -25°C/1 year(Do not lower than -25°C)

Molecularweight : 34kD

Background : Members of the SOX family of transcription factors are characterized by the presence of a DNA-binding high mobility group (HMG) domain, homologous to the HMG box of sex-determining region Y (SRY). Forming a subgroup of the HMG domain superfamily, SOX proteins have been implicated in cell fate decisions in a diverse range of developmental processes. SOX transcription factors have diverse tissue-specific expression patterns during early development and have been proposed to act as target-specific transcription factors and/or as chromatin structure regulatory elements. The protein encoded by this gene was identified as a SOX family member based on conserved domains, and its expression in various tissues suggests a role in both differentiation and maintenance of several cell types. [provided by RefSeq, Jan 2013],

Function : function: Binds to the sequence 5'-AACAAAT-3'. , similarity: Contains 1 HMG box DNA-binding domain. , tissue specificity: Expressed most abundantly in the CNS. Also expressed in fetal brain and kidney and adult heart, pancreas, testis and ovary. Other tissues were only weakly positive. ,

Subcellular Location : Nucleus .

Expression : Expressed most abundantly in the CNS (PubMed:9215677). Expressed in the heart, pancreas, thymus, testis and ovary (PubMed:9215677). Weakly expressed in brain, placenta, lung, liver, skeletal muscle, kidney, spleen, prostate, small intestine, colon, and peripheral blood lymphocytes (PubMed:9215677).

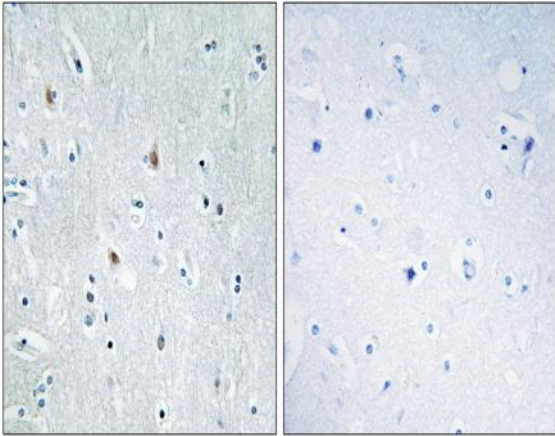
Sort : 16512

No4 : 1

Host : Rabbit

Modifications : Unmodified

Products Images



Immunohistochemistry analysis of paraffin-embedded human brain tissue, using SOX12 Antibody. The picture on the right is blocked with the synthesized peptide.