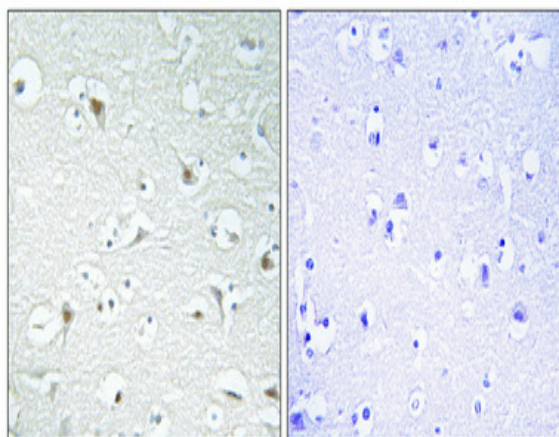


TFIIA- $\alpha$  Polyclonal Antibody

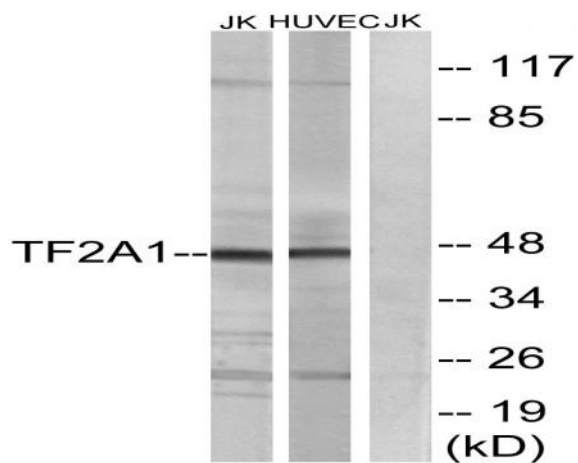
<b>Catalog No :</b>	YT4614
<b>Reactivity :</b>	Human;Mouse;Rat
<b>Applications :</b>	WB;IHC;IF;ELISA
<b>Target :</b>	TFIIA- $\alpha$
<b>Fields :</b>	>>Basal transcription factors;>>Viral carcinogenesis
<b>Gene Name :</b>	GTF2A1
<b>Protein Name :</b>	Transcription initiation factor IIA subunit 1
<b>Human Gene Id :</b>	2957
<b>Human Swiss Prot No :</b>	P52655
<b>Mouse Gene Id :</b>	83602
<b>Mouse Swiss Prot No :</b>	Q99PM3
<b>Rat Gene Id :</b>	83830
<b>Rat Swiss Prot No :</b>	O08949
<b>Immunogen :</b>	The antiserum was produced against synthesized peptide derived from human TF2A1. AA range:281-330
<b>Specificity :</b>	TFIIA- $\alpha$ Polyclonal Antibody detects endogenous levels of TFIIA- $\alpha$ protein.
<b>Formulation :</b>	Liquid in PBS containing 50% glycerol, 0.5% BSA and 0.02% sodium azide.
<b>Source :</b>	Polyclonal, Rabbit,IgG
<b>Dilution :</b>	WB 1:500 - 1:2000. IHC 1:100 - 1:300. ELISA: 1:40000.. IF 1:50-200

<b>Purification :</b>	The antibody was affinity-purified from rabbit antiserum by affinity-chromatography using epitope-specific immunogen.
<b>Concentration :</b>	1 mg/ml
<b>Storage Stability :</b>	-15°C to -25°C/1 year(Do not lower than -25°C)
<b>Observed Band :</b>	42kD
<b>Cell Pathway :</b>	Basal transcription factors;
<b>Background :</b>	Accurate transcription initiation on TATA-containing class II genes involves the ordered assembly of RNA polymerase II (POLR2A; MIM 180660) and several general initiation factors (summarized by DeJong and Roeder, 1993 [PubMed 8224848]). One of these factors is TFIIA, which when purified from HeLa extracts consists of 35-, 19-, and 12-kD subunits.[supplied by OMIM, Jul 2010],
<b>Function :</b>	function:TFIIA is a component of the transcription machinery of RNA polymerase II and plays an important role in transcriptional activation. TFIIA in a complex with TBP mediates transcriptional activity.,PTM:The alpha and beta subunits are postranslationally produced from the precursor form by TASP1. The cleavage promotes proteosomal degradation.,similarity:Belongs to the TFIIA subunit 1 family.,subunit:TFIIA is a heterodimer of the large unprocessed subunit 1 and a small subunit gamma. It was originally believed to be a heterotrimer of an alpha (p35), a beta (p19) and a gamma subunit (p12). TFIIA forms a complex with TBP.,
<b>Subcellular Location :</b>	Nucleus.
<b>Expression :</b>	Epithelium,
<b>Sort :</b>	17060
<b>No4 :</b>	1
<b>Host :</b>	Rabbit
<b>Modifications :</b>	Unmodified

## Products Images



Immunohistochemical analysis of paraffin-embedded Human brain. Antibody was diluted at 1:100(4° overnight). High-pressure and temperature Tris-EDTA,pH8.0 was used for antigen retrieval. Negative control (right) obtained from antibody was pre-absorbed by immunogen peptide.



Western blot analysis of lysates from Jurkat and HUVEC cells, using TF2A1 Antibody. The lane on the right is blocked with the synthesized peptide.