

SOCS-2 Polyclonal Antibody

Catalog No :	YT4363
Reactivity :	Human;Mouse;Rat
Applications :	WB;IHC
Target :	SOCS-2
Fields :	>>JAK-STAT signaling pathway;>>Insulin signaling pathway;>>Prolactin signaling pathway;>>Type II diabetes mellitus;>>Growth hormone synthesis, secretion and action
Gene Name :	SOCS2
Protein Name :	Suppressor of cytokine signaling 2
Human Gene Id :	8835
Human Swiss Prot No :	O14508
Mouse Gene Id :	216233
Mouse Swiss Prot No :	O35717
Rat Gene Id :	84607
Rat Swiss Prot No :	O88582
Immunogen :	The antiserum was produced against synthesized peptide derived from human SOCS-2. AA range:18-67
Specificity :	SOCS-2 Polyclonal Antibody detects endogenous levels of SOCS-2 protein.
Formulation :	Liquid in PBS containing 50% glycerol, 0.5% BSA and 0.02% sodium azide.
Source :	Polyclonal, Rabbit,IgG
Dilution :	WB 1:500-2000;IHC 1:50-300

Purification : The antibody was affinity-purified from rabbit antiserum by affinity-chromatography using epitope-specific immunogen.

Concentration : 1 mg/ml

Storage Stability : -15°C to -25°C/1 year(Do not lower than -25°C)

Observed Band : 22kD

Cell Pathway : Jak_STAT;Insulin_Receptor;Type II diabetes mellitus;

Background : This gene encodes a member of the suppressor of cytokine signaling (SOCS) family. SOCS family members are cytokine-inducible negative regulators of cytokine receptor signaling via the Janus kinase/signal transducer and activation of transcription pathway (the JAK/STAT pathway). SOCS family proteins interact with major molecules of signaling complexes to block further signal transduction, in part, by proteasomal depletion of receptors or signal-transducing proteins via ubiquitination. The expression of this gene can be induced by a subset of cytokines, including erythropoietin, GM-CSF, IL10, interferon (IFN)-gamma and by cytokine receptors such as growth hormone receptor. The protein encoded by this gene interacts with the cytoplasmic domain of insulin-like growth factor-1 receptor (IGF1R) and is thought to be involved in the regulation of IGF1R mediated cell signaling. This gene has

Function : domain:The SOCS box domain mediates the interaction with the Elongin BC complex, an adapter module in different E3 ubiquitin ligase complexes.,function:SOCS family proteins form part of a classical negative feedback system that regulates cytokine signal transduction. SOCS2 appears to be a negative regulator in the growth hormone/IGF1 signaling pathway. Probable substrate recognition component of a SCF-like ECS (Elongin BC-CUL2/5-SOCS-box protein) E3 ubiquitin-protein ligase complex which mediates the ubiquitination and subsequent proteasomal degradation of target proteins.,induction:By a subset of cytokines, including erythropoietin and granulocyte-macrophage colony stimulating factor (GM-CSF).,pathway:Protein modification; protein ubiquitination.,similarity:Contains 1 SH2 domain.,similarity:Contains 1 SOCS box domain.,subunit:Interacts with IGF1 receptor, prolactin receptor and growth h

Subcellular Location : cytoplasm,cytosol,

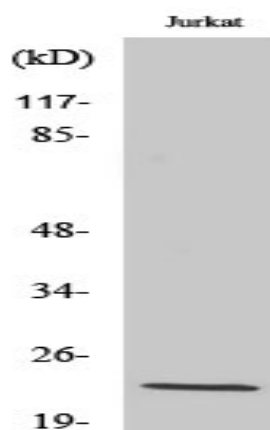
Expression : High expression in heart, placenta, lung, kidney and prostate. Predominantly expressed in pulmonary epithelia cells, specifically type II pneumocytes.

Tag : hot

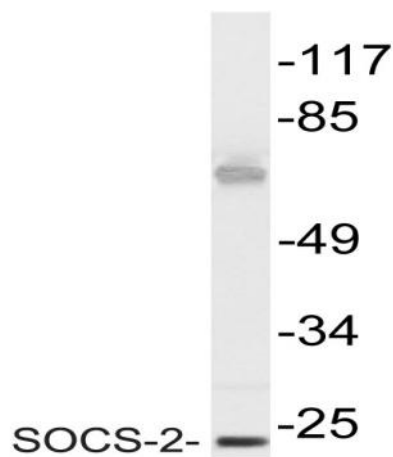
Sort : 16487

No4 :	<u>1</u>
Host :	<u>Rabbit</u>
Modifications :	<u>Unmodified</u>

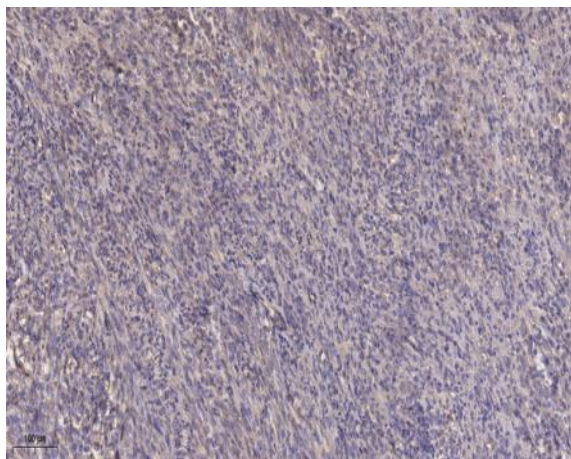
Products Images



Western Blot analysis of various cells using SOCS-2 Polyclonal Antibody diluted at 1:1000



Western blot analysis of lysate from Jurkat cells, using SOCS-2 antibody.



Immunohistochemical analysis of paraffin-embedded human Colon cancer. 1, Antibody was diluted at 1:200(4 ° overnight). 2, Tris-EDTA,pH9.0 was used for antigen retrieval. 3,Secondary antibody was diluted at 1:200(room temperature, 45min).