

## Tensin-1 Polyclonal Antibody

<b>Catalog No :</b>	YT4603
<b>Reactivity :</b>	Human;Mouse
<b>Applications :</b>	WB;ELISA
<b>Target :</b>	Tensin-1
<b>Gene Name :</b>	TNS1
<b>Protein Name :</b>	Tensin-1
<b>Human Gene Id :</b>	7145
<b>Human Swiss Prot No :</b>	Q9HBL0
<b>Immunogen :</b>	The antiserum was produced against synthesized peptide derived from human Tensin-1. AA range:1273-1322
<b>Specificity :</b>	Tensin-1 Polyclonal Antibody detects endogenous levels of Tensin-1 protein.
<b>Formulation :</b>	Liquid in PBS containing 50% glycerol, 0.5% BSA and 0.02% sodium azide.
<b>Source :</b>	Polyclonal, Rabbit,IgG
<b>Dilution :</b>	WB 1:500 - 1:2000. ELISA: 1:10000. Not yet tested in other applications.
<b>Purification :</b>	The antibody was affinity-purified from rabbit antiserum by affinity-chromatography using epitope-specific immunogen.
<b>Concentration :</b>	1 mg/ml
<b>Storage Stability :</b>	-15°C to -25°C/1 year(Do not lower than -25°C)
<b>Observed Band :</b>	200kD
<b>Background :</b>	The protein encoded by this gene localizes to focal adhesions, regions of the plasma membrane where the cell attaches to the extracellular matrix. This protein

crosslinks actin filaments and contains a Src homology 2 (SH2) domain, which is often found in molecules involved in signal transduction. This protein is a substrate of calpain II. Alternative splicing results in multiple transcript variants encoding different isoforms. [provided by RefSeq, Apr 2015],

**Function :**

function:May be involved in cell migration, cartilage development and in linking signal transduction pathways to the cytoskeleton.,PTM:Rapidly cleaved by calpain II.,PTM:Tyrosine phosphorylated.,similarity:Contains 1 C2 tensin-type domain.,similarity:Contains 1 phosphatase tensin-type domain.,similarity:Contains 1 SH2 domain.,subunit:Binds to actin filaments and interacts with phosphotyrosine-containing proteins. Interacts with STARD8.,tissue specificity:Ubiquitous.,

**Subcellular Location :**

Cell surface . Cell junction, focal adhesion . Cytoplasm, cytoskeleton . Localized at cell periphery preferentially to fibrillar adhesions than focal adhesions. Translocates from the cell edge to cell center in an ITGB1BP1-dependent manner.

**Expression :**

Ubiquitous.

**Sort :**

17036

**No4 :**

1

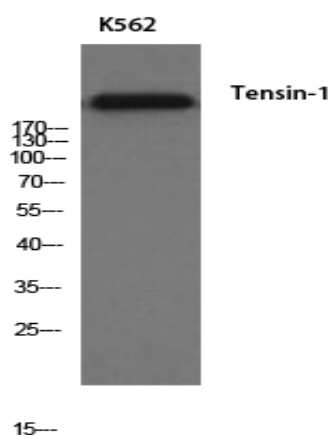
**Host :**

Rabbit

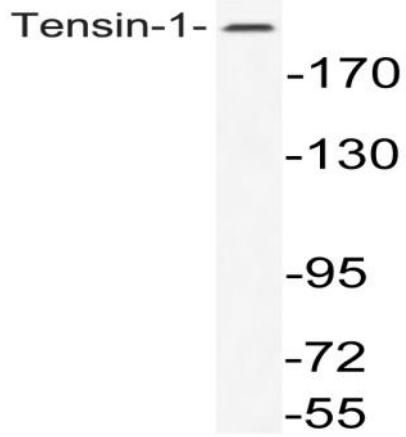
**Modifications :**

Unmodified

## Products Images



Western Blot analysis of K562 cells using Tensin-1 Polyclonal Antibody



Western blot analysis of lysate from K562 cells, using Tensin-1 antibody.