

**TEM7 Polyclonal Antibody**

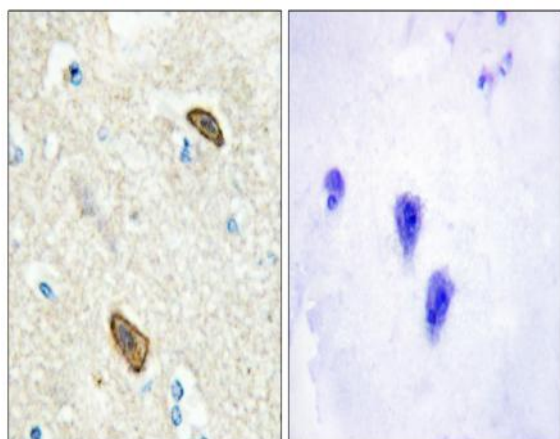
<b>Catalog No :</b>	YT4601
<b>Reactivity :</b>	Human;Rat;Mouse;
<b>Applications :</b>	IHC;IF;ELISA
<b>Target :</b>	TEM7
<b>Gene Name :</b>	PLXDC1
<b>Protein Name :</b>	Plexin domain-containing protein 1
<b>Human Gene Id :</b>	57125
<b>Human Swiss Prot No :</b>	Q8IUUK5
<b>Mouse Swiss Prot No :</b>	Q91ZV7
<b>Immunogen :</b>	The antiserum was produced against synthesized peptide derived from human PLXDC1. AA range:71-120
<b>Specificity :</b>	TEM7 Polyclonal Antibody detects endogenous levels of TEM7 protein.
<b>Formulation :</b>	Liquid in PBS containing 50% glycerol, 0.5% BSA and 0.02% sodium azide.
<b>Source :</b>	Polyclonal, Rabbit,IgG
<b>Dilution :</b>	IHC 1:100 - 1:300. ELISA: 1:20000.. IF 1:50-200
<b>Purification :</b>	The antibody was affinity-purified from rabbit antiserum by affinity-chromatography using epitope-specific immunogen.
<b>Concentration :</b>	1 mg/ml
<b>Storage Stability :</b>	-15°C to -25°C/1 year(Do not lower than -25°C)
<b>Molecularweight :</b>	56kD

---

<b>Background :</b>	PTM:N-glycosylated.,similarity:Belongs to the plexin family.,subunit:May interact with cortactin.,tissue specificity:Detected in endothelial cells from colorectal cancer, and in endothelial cells from primary cancers of the lung, liver, pancreas, breast and brain. Not detectable in endothelial cells from normal tissue.,
<b>Function :</b>	PTM:N-glycosylated.,similarity:Belongs to the plexin family.,subunit:May interact with cortactin.,tissue specificity:Detected in endothelial cells from colorectal cancer, and in endothelial cells from primary cancers of the lung, liver, pancreas, breast and brain. Not detectable in endothelial cells from normal tissue.,
<b>Subcellular Location :</b>	[Isoform 1]: Cell membrane; Single-pass type I membrane protein. Cell junction, tight junction. Localized predominantly at the tight junctions of vascular endothelial cells and to a lesser extent at the luminal surface of vascular endothelial cells.; [Isoform 2]: Secreted .; [Isoform 3]: Secreted .; [Isoform 4]: Cytoplasm .
<b>Expression :</b>	Detected in endothelial cells from colorectal cancer, and in endothelial cells from primary cancers of the lung, liver, pancreas, breast and brain. Not detectable in endothelial cells from normal tissue. Expressed in fibrovascular membrane with increased expression in individuals with proliferative diabetic retinopathy.
<b>Sort :</b>	17031
<b>No4 :</b>	1
<b>Host :</b>	Rabbit
<b>Modifications :</b>	Unmodified

---

## Products Images



Immunohistochemistry analysis of paraffin-embedded human brain, using PLXDC1 Antibody. The picture on the right is blocked with the synthesized peptide.