

## SNAT2 Polyclonal Antibody

<b>Catalog No :</b>	YT4354
<b>Reactivity :</b>	Human;Rat;Mouse;
<b>Applications :</b>	WB;ELISA;IHC
<b>Target :</b>	SNAT2
<b>Fields :</b>	>>Glutamatergic synapse;>>GABAergic synapse;>>Protein digestion and absorption
<b>Gene Name :</b>	SLC38A2
<b>Protein Name :</b>	Sodium-coupled neutral amino acid transporter 2
<b>Human Gene Id :</b>	54407
<b>Human Swiss Prot No :</b>	Q96QD8
<b>Mouse Swiss Prot No :</b>	Q8CFE6
<b>Immunogen :</b>	The antiserum was produced against synthesized peptide derived from human SLC38A2. AA range:151-200
<b>Specificity :</b>	SNAT2 Polyclonal Antibody detects endogenous levels of SNAT2 protein.
<b>Formulation :</b>	Liquid in PBS containing 50% glycerol, 0.5% BSA and 0.02% sodium azide.
<b>Source :</b>	Polyclonal, Rabbit,IgG
<b>Dilution :</b>	WB 1:500-2000;IHC 1:50-300; ELISA 2000-20000
<b>Purification :</b>	The antibody was affinity-purified from rabbit antiserum by affinity-chromatography using epitope-specific immunogen.
<b>Concentration :</b>	1 mg/ml
<b>Storage Stability :</b>	-15°C to -25°C/1 year(Do not lower than -25°C)

**Observed Band :** 50kD

---

**Background :**

enzyme regulation:Inhibited by N-methyl-D-glucamine and probably choline.,function:Functions as a sodium-dependent amino acid transporter. Mediates the saturable, pH-sensitive and electrogenic cotransport of neutral amino acids and sodium ions with a stoichiometry of 1:1. May function in the transport of amino acids at the blood-brain barrier and in the supply of maternal nutrients to the fetus through the placenta.,induction:Up-regulated upon hypertonic conditions and amino acid deprivation.,miscellaneous:Depletion of SCL38A2 by siRNA prevents the recovery of cells from hypertonic stress.,PTM:Polyubiquitination by NEDD4L regulates the degradation and the activity of SLC38A2.,similarity:Belongs to the amino acid/polyamine transporter 2 family.,subcellular location:Insulin promotes recruitment to the plasma membrane from a pool localized in the trans-Golgi network or endosomes (By similarity). Enriched in the somatodendritic compartment of neurons, it is also detected at the axonal shaft but excluded from the nerve terminal.,tissue specificity:Ubiquitously expressed. Widely expressed in the central nervous system with higher concentrations in caudal regions. Expressed by glutamatergic and GABAergic neurons together with astrocytes and other non-neuronal cells in the cerebral cortex (at protein level).,

---

**Function :**

enzyme regulation:Inhibited by N-methyl-D-glucamine and probably choline.,function:Functions as a sodium-dependent amino acid transporter. Mediates the saturable, pH-sensitive and electrogenic cotransport of neutral amino acids and sodium ions with a stoichiometry of 1:1. May function in the transport of amino acids at the blood-brain barrier and in the supply of maternal nutrients to the fetus through the placenta.,induction:Up-regulated upon hypertonic conditions and amino acid deprivation.,miscellaneous:Depletion of SCL38A2 by siRNA prevents the recovery of cells from hypertonic stress.,PTM:Polyubiquitination by NEDD4L regulates the degradation and the activity of SLC38A2.,similarity:Belongs to the amino acid/polyamine transporter 2 family.,subcellular location:Insulin promotes recruitment to the plasma membrane from a pool localized in the trans-Golgi network or endosomes (By similar

---

**Subcellular Location :**

Cell membrane ; Multi-pass membrane protein . Insulin promotes recruitment to the plasma membrane from a pool localized in the trans-Golgi network or endosomes (By similarity). Enriched in the somatodendritic compartment of neurons, it is also detected at the axonal shaft but excluded from the nerve terminal. .

---

**Expression :**

Ubiquitously expressed. Widely expressed in the central nervous system with higher concentrations in caudal regions. Expressed by glutamatergic and GABAergic neurons together with astrocytes and other non-neuronal cells in the cerebral cortex (at protein level).

---

**Sort :**1

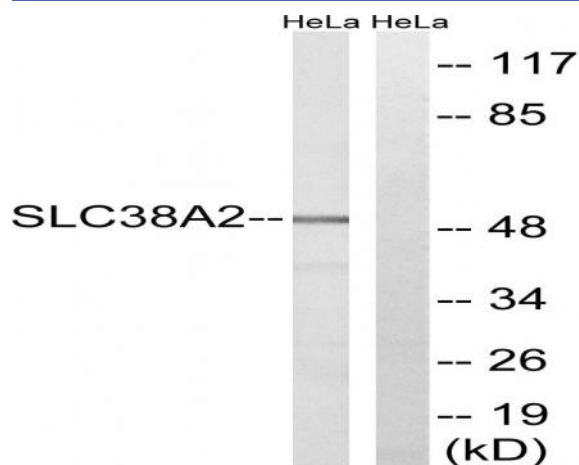
---

**No4 :**1

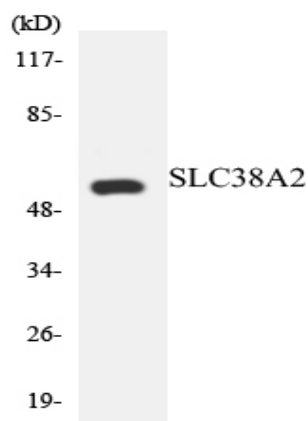
---

**Host :** Rabbit**Modifications :** Unmodified

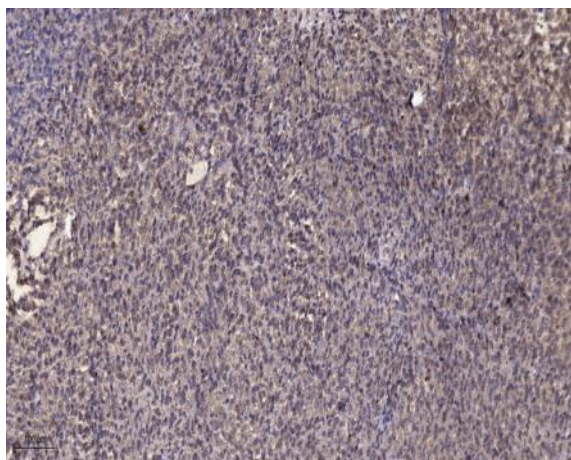
## Products Images



Western blot analysis of lysates from HeLa cells, using SLC38A2 Antibody. The lane on the right is blocked with the synthesized peptide.



Western blot analysis of the lysates from HeLa cells using SLC38A2 antibody.



Immunohistochemical analysis of paraffin-embedded human Colon cancer. 1, Antibody was diluted at 1:200(4° overnight). 2, Tris-EDTA,pH9.0 was used for antigen retrieval. 3,Secondary antibody was diluted at 1:200(room temperature, 45min).