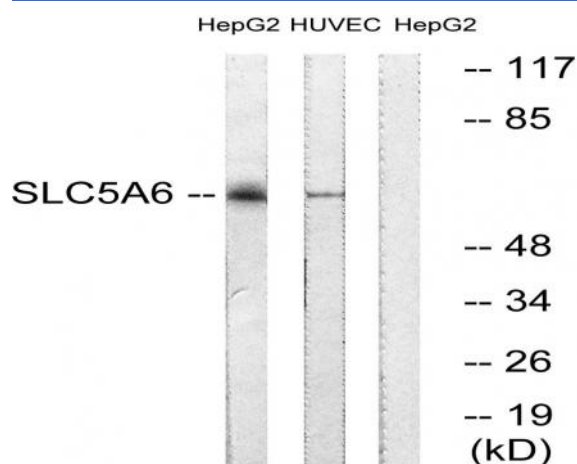


SMVT Polyclonal Antibody

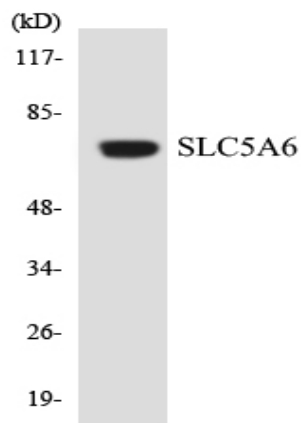
Catalog No :	YT4349
Reactivity :	Human;Rat;Mouse;
Applications :	WB;ELISA;IHC
Target :	SMVT
Fields :	>>Vitamin digestion and absorption
Gene Name :	SLC5A6
Protein Name :	Sodium-dependent multivitamin transporter
Human Gene Id :	8884
Human Swiss Prot No :	Q9Y289
Mouse Swiss Prot No :	Q5U4D8
Immunogen :	The antiserum was produced against synthesized peptide derived from human SLC5A6. AA range:551-600
Specificity :	SMVT Polyclonal Antibody detects endogenous levels of SMVT protein.
Formulation :	Liquid in PBS containing 50% glycerol, 0.5% BSA and 0.02% sodium azide.
Source :	Polyclonal, Rabbit,IgG
Dilution :	WB 1:500-2000;IHC 1:50-300; ELISA 2000-20000
Purification :	The antibody was affinity-purified from rabbit antiserum by affinity-chromatography using epitope-specific immunogen.
Concentration :	1 mg/ml
Storage Stability :	-15°C to -25°C/1 year(Do not lower than -25°C)

Observed Band :	68kD
Background :	function:Transports pantothenate, biotin and lipoate in the presence of sodium.,similarity:Belongs to the sodium:solute symporter (SSF) (TC 2.A.21) family.,
Function :	function:Transports pantothenate, biotin and lipoate in the presence of sodium.,similarity:Belongs to the sodium:solute symporter (SSF) (TC 2.A.21) family.,
Subcellular Location :	Cell membrane ; Multi-pass membrane protein .; Cell membrane ; Multi-pass membrane protein . (Microbial infection) Exposure to E.coli lipopolysaccharides leads to reduced cell membrane localization. .
Expression :	Expressed in microvessels of the brain (at protein level) (PubMed:25809983). Expressed in heart, brain, placenta, lung, liver, skeletal muscle, kidney, and pancreas (PubMed:10329687).
Sort :	16458
No4 :	1
Host :	Rabbit
Modifications :	Unmodified

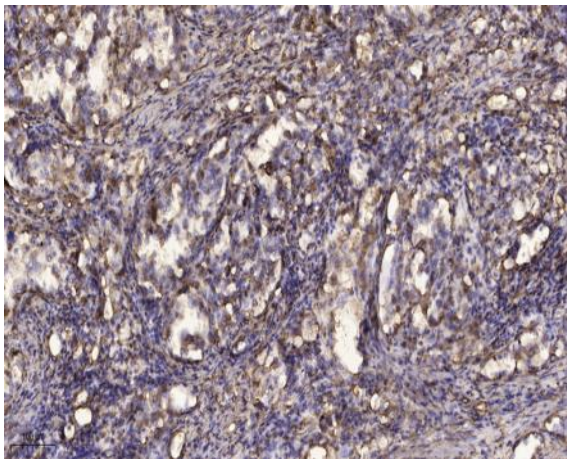
Products Images



Western blot analysis of lysates from HepG2 and HUVEC cells, using SLC5A6 Antibody. The lane on the right is blocked with the synthesized peptide.



Western blot analysis of the lysates from COLO205 cells using SLC5A6 antibody.



Immunohistochemical analysis of paraffin-embedded human Squamous cell carcinoma of lung. 1, Antibody was diluted at 1:200(4° overnight). 2, Tris-EDTA,pH9.0 was used for antigen retrieval. 3,Secondary antibody was diluted at 1:200(room temperature, 45min).