

SMG7 Polyclonal Antibody

Catalog No :	YT4342
Reactivity :	Human;Mouse
Applications :	WB;IHC;IF;ELISA
Target :	SMG7
Fields :	>>mRNA surveillance pathway
Gene Name :	SMG7
Protein Name :	Protein SMG7
Human Gene Id :	9887
Human Swiss Prot No :	Q92540
Mouse Swiss Prot No :	Q5RJH6
Immunogen :	The antiserum was produced against synthesized peptide derived from human SMG7. AA range:521-570
Specificity :	SMG7 Polyclonal Antibody detects endogenous levels of SMG7 protein.
Formulation :	Liquid in PBS containing 50% glycerol, 0.5% BSA and 0.02% sodium azide.
Source :	Polyclonal, Rabbit,IgG
Dilution :	WB 1:500 - 1:2000. IHC 1:100 - 1:300. IF 1:200 - 1:1000. ELISA: 1:20000. Not yet tested in other applications.
Purification :	The antibody was affinity-purified from rabbit antiserum by affinity-chromatography using epitope-specific immunogen.
Concentration :	1 mg/ml
Storage Stability :	-15°C to -25°C/1 year(Do not lower than -25°C)

Observed Band : 127kD

Background : SMG7, nonsense mediated mRNA decay factor(SMG7) Homo sapiens This gene encodes a protein that is essential for nonsense-mediated mRNA decay (NMD); a process whereby transcripts with premature termination codons are targeted for rapid degradation by a mRNA decay complex. The mRNA decay complex consists, in part, of this protein along with proteins SMG5 and UPF1. The N-terminal domain of this protein is thought to mediate its association with SMG5 or UPF1 while the C-terminal domain interacts with the mRNA decay complex. This protein may therefore couple changes in UPF1 phosphorylation state to the degradation of NMD-candidate transcripts. Alternative splicing results in multiple transcript variants encoding distinct isoforms. [provided by RefSeq, Aug 2011],

Function : function:Plays a role in nonsense-mediated mRNA decay. Recruits RENT1 to cytoplasmic mRNA decay bodies.,similarity:Contains 2 TPR repeats.,subcellular location:Predominantly cytoplasmic, and nuclear. Shuttles between nucleus and cytoplasm.,subunit:Part of a complex that contains SMG5, SMG7, PP2AC, a short isoform of UPF3A (isoform UPF3AS, but not isoform UPF3AL) and phosphorylated RENT1.,

Subcellular Location : Cytoplasm . Nucleus . Predominantly cytoplasmic, and nuclear. Shuttles between nucleus and cytoplasm. .

Expression : Bone marrow,Brain,Epithelium,Testis,

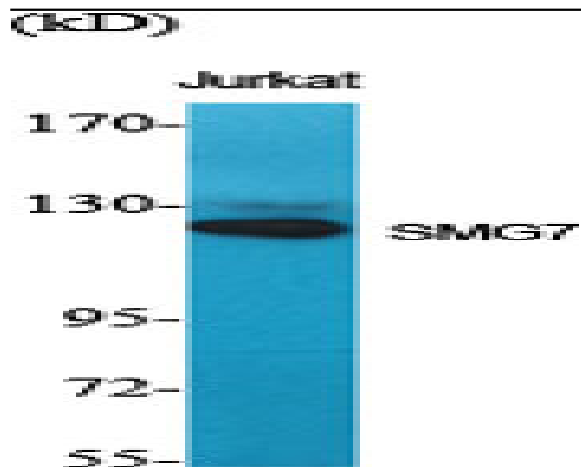
Sort : 16445

No4 : 1

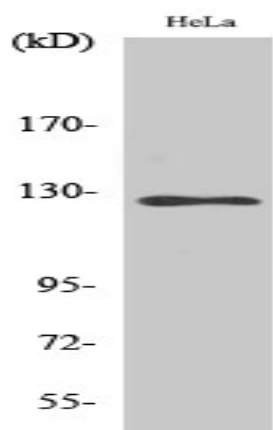
Host : Rabbit

Modifications : Unmodified

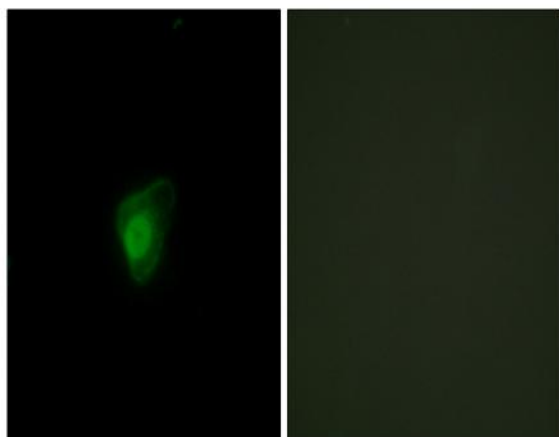
Products Images



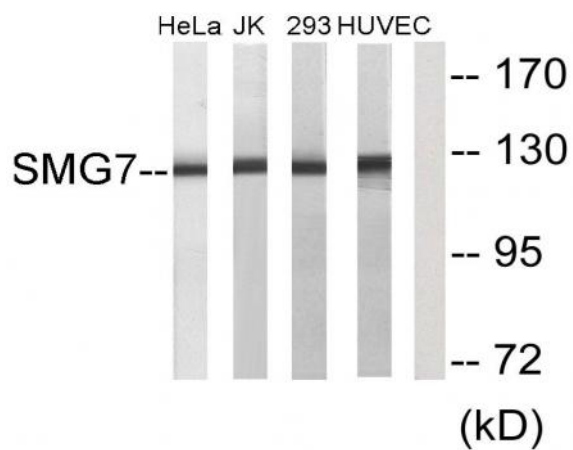
Western Blot analysis of various cells using SMG7 Polyclonal Antibody diluted at 1:2000



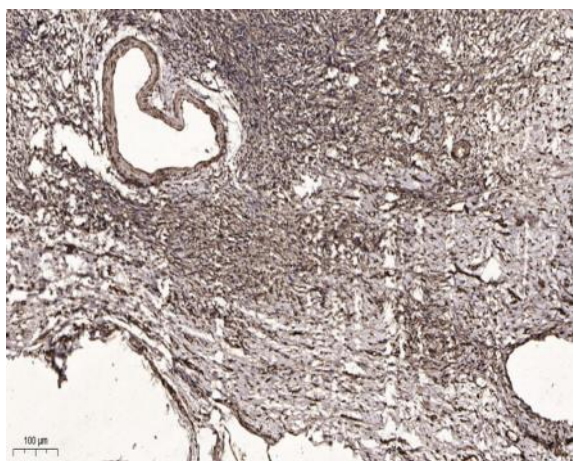
Western Blot analysis of HuvEc cells using SMG7 Polyclonal Antibody diluted at 1:2000



Immunofluorescence analysis of HepG2 cells, using SMG7 Antibody. The picture on the right is blocked with the synthesized peptide.



Western blot analysis of lysates from HeLa, Jurkat, 293, and HUVEC cells, using SMG7 Antibody. The lane on the right is blocked with the synthesized peptide.



Immunohistochemical analysis of paraffin-embedded human oophoroma. 1, Antibody was diluted at 1:200(4° overnight). 2, Tris-EDTA,pH9.0 was used for antigen retrieval. 3,Secondary antibody was diluted at 1:200(room temperature, 45min).