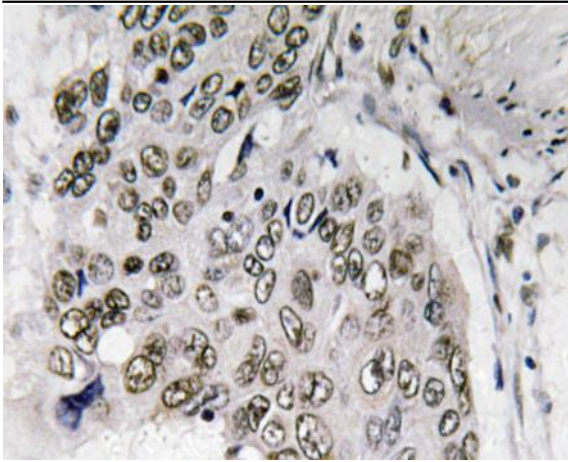


Smad6 Polyclonal Antibody

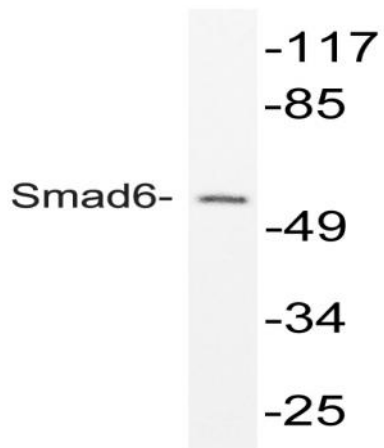
Catalog No :	YT4338
Reactivity :	Human;Mouse
Applications :	WB;IHC;IF;ELISA
Target :	Smad6
Fields :	>>TGF-beta signaling pathway
Gene Name :	SMAD6
Protein Name :	Mothers against decapentaplegic homolog 6
Human Gene Id :	4091
Human Swiss Prot No :	O43541
Mouse Gene Id :	17130
Mouse Swiss Prot No :	O35182
Immunogen :	The antiserum was produced against synthesized peptide derived from human Smad6. AA range:323-372
Specificity :	Smad6 Polyclonal Antibody detects endogenous levels of Smad6 protein.
Formulation :	Liquid in PBS containing 50% glycerol, 0.5% BSA and 0.02% sodium azide.
Source :	Polyclonal, Rabbit,IgG
Dilution :	WB 1:500 - 1:2000. IHC 1:100 - 1:300. ELISA: 1:40000.. IF 1:50-200
Purification :	The antibody was affinity-purified from rabbit antiserum by affinity-chromatography using epitope-specific immunogen.
Concentration :	1 mg/ml

Storage Stability :	-15°C to -25°C/1 year(Do not lower than -25°C)
Observed Band :	62kD
Cell Pathway :	TGF-beta;
Background :	<p>The protein encoded by this gene belongs to the SMAD family of proteins, which are related to Drosophila &apos;mothers against decapentaplegic&apos; (Mad) and C. elegans Sma. SMAD proteins are signal transducers and transcriptional modulators that mediate multiple signaling pathways. This protein functions in the negative regulation of BMP and TGF-beta/activin-signalling. Multiple transcript variants have been found for this gene.[provided by RefSeq, Sep 2014],</p>
Function :	<p>function:Antagonist of signaling by TGF-beta (transforming growth factor) type 1 receptor superfamily members; has been shown to inhibit selectively BMP (bone morphogenetic proteins) signaling by competing with the co-SMAD SMAD4 for receptor-activated SMAD1. SMAD6 is an inhibitory SMAD (I-SMAD) or antagonistic SMAD. Binds to regulatory elements in target promoter regions.,PTM:Phosphorylated by BMP type 1 receptor kinase and by PRKX.,similarity:Belongs to the dwarfin/SMAD family.,similarity:Contains 1 MH1 (MAD homology 1) domain.,similarity:Contains 1 MH2 (MAD homology 2) domain.,subunit:Interacts with NEDD4L (By similarity). Interacts with RNF111 and AXIN1. Interacts with TGF-beta type I receptor superfamily members, SMAD1, HOXC8 and HOXC9. Interacts with STAMBP and PRKX.,tissue specificity:Ubiquitous in various organs, with higher levels in lung. Isoform B is up-regulated in diseased he</p>
Subcellular Location :	Nucleus .
Expression :	Ubiquitous in various organs, with higher levels in lung. Isoform B is up-regulated in diseased heart tissue.
Sort :	16429
No4 :	1
Host :	Rabbit
Modifications :	Unmodified

Products Images



Immunohistochemistry analysis of Smad6 antibody in paraffin-embedded human lung carcinoma tissue.



Western blot analysis of lysate from mouse brain, using Smad6 antibody.