

TCP-1  $\zeta$  Polyclonal Antibody

<b>Catalog No :</b>	YT4585
<b>Reactivity :</b>	Human;Mouse;Rat
<b>Applications :</b>	WB;IHC;IF;ELISA
<b>Target :</b>	TCP-1 $\zeta$
<b>Gene Name :</b>	CCT6A
<b>Protein Name :</b>	T-complex protein 1 subunit zeta
<b>Human Gene Id :</b>	908
<b>Human Swiss Prot No :</b>	P40227
<b>Mouse Gene Id :</b>	12466
<b>Mouse Swiss Prot No :</b>	P80317
<b>Immunogen :</b>	The antiserum was produced against synthesized peptide derived from human CCT6A. AA range:171-220
<b>Specificity :</b>	TCP-1 $\zeta$ Polyclonal Antibody detects endogenous levels of TCP-1 $\zeta$ protein.
<b>Formulation :</b>	Liquid in PBS containing 50% glycerol, 0.5% BSA and 0.02% sodium azide.
<b>Source :</b>	Polyclonal, Rabbit,IgG
<b>Dilution :</b>	WB 1:500 - 1:2000. IHC 1:100 - 1:300. ELISA: 1:10000.. IF 1:50-200
<b>Purification :</b>	The antibody was affinity-purified from rabbit antiserum by affinity-chromatography using epitope-specific immunogen.
<b>Concentration :</b>	1 mg/ml
<b>Storage Stability :</b>	-15°C to -25°C/1 year(Do not lower than -25°C)

**Observed Band :** 60kD

---

**Background :** The protein encoded by this gene is a molecular chaperone that is a member of the chaperonin containing TCP1 complex (CCT), also known as the TCP1 ring complex (TRiC). This complex consists of two identical stacked rings, each containing eight different proteins. Unfolded polypeptides enter the central cavity of the complex and are folded in an ATP-dependent manner. The complex folds various proteins, including actin and tubulin. Alternate transcriptional splice variants of this gene, encoding different isoforms, have been characterized. In addition, several pseudogenes of this gene have been located. [provided by RefSeq, Jun 2010],

---

**Function :** caution:The sequence shown here is derived from an Ensembl automatic analysis pipeline and should be considered as preliminary data.,function:Molecular chaperone; assists the folding of proteins upon ATP hydrolysis. Known to play a role, in vitro, in the folding of actin and tubulin.,similarity:Belongs to the TCP-1 chaperonin family.,subunit:Heterooligomeric complex of about 850 to 900 kDa that forms two stacked rings, 12 to 16 nm in diameter. Interacts with PACRG.,

---

**Subcellular Location :** Cytoplasm .

---

**Expression :** B-cell,Brain,Cajal-Retzius cell,Platelet,

---

**Sort :** 17008

---

**No4 :** 1

---

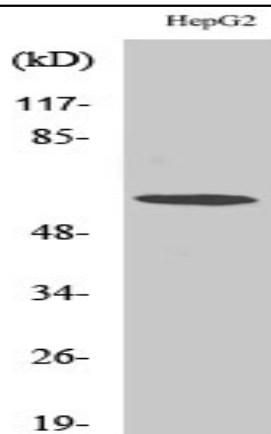
**Host :** Rabbit

---

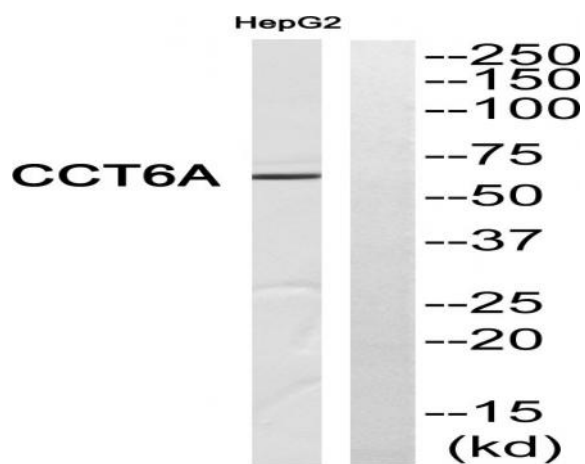
**Modifications :** Unmodified

---

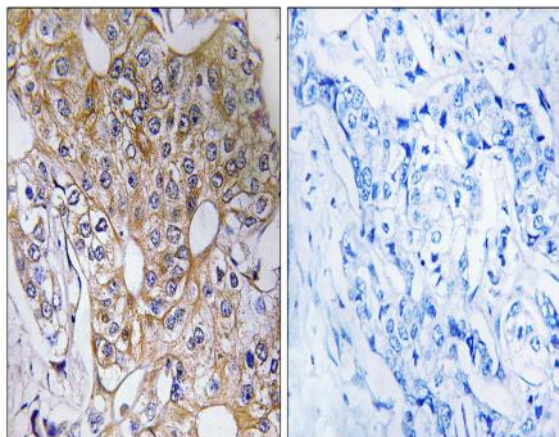
## Products Images



Western Blot analysis of various cells using TCP-1  $\zeta$  Polyclonal Antibody diluted at 1:500



Western blot analysis of CCT6A Antibody. The lane on the right is blocked with the CCT6A peptide.



Immunohistochemistry analysis of paraffin-embedded human breast carcinoma tissue, using CCT6A Antibody. The picture on the right is blocked with the synthesized peptide.