

## SLC43A1 Polyclonal Antibody

<b>Catalog No :</b>	YT4315
<b>Reactivity :</b>	Human;Mouse
<b>Applications :</b>	WB;ELISA;IHC
<b>Target :</b>	SLC43A1
<b>Gene Name :</b>	SLC43A1
<b>Protein Name :</b>	Large neutral amino acids transporter small subunit 3
<b>Human Gene Id :</b>	8501
<b>Human Swiss Prot No :</b>	O75387
<b>Mouse Swiss Prot No :</b>	Q8BSM7
<b>Immunogen :</b>	The antiserum was produced against synthesized peptide derived from human LAT3. AA range:231-280
<b>Specificity :</b>	SLC43A1 Polyclonal Antibody detects endogenous levels of SLC43A1 protein.
<b>Formulation :</b>	Liquid in PBS containing 50% glycerol, 0.5% BSA and 0.02% sodium azide.
<b>Source :</b>	Polyclonal, Rabbit,IgG
<b>Dilution :</b>	WB 1:500-2000;IHC 1:50-300; ELISA 2000-20000
<b>Purification :</b>	The antibody was affinity-purified from rabbit antiserum by affinity-chromatography using epitope-specific immunogen.
<b>Concentration :</b>	1 mg/ml
<b>Storage Stability :</b>	-15°C to -25°C/1 year(Do not lower than -25°C)
<b>Observed Band :</b>	61kD

**Background :** SLC43A1 belongs to the system L family of plasma membrane carrier proteins that transports large neutral amino acids (Babu et al., 2003 [PubMed 12930836]).[supplied by OMIM, Mar 2008],

**Function :** function:Sodium-independent, high affinity transport of large neutral amino acids. Has narrower substrate selectivity compared to SLC7A5 and SLC7A8 and mainly transports branched-chain amino acids and phenylalanine. Plays a role in the development of human prostate cancer, from prostatic intraepithelial neoplasia to invasive prostate cancer.,miscellaneous:Up-regulated in early prostate cancer development with highest expression level in seminomas of testicular germ cell tumors.,similarity:Belongs to the SLC43A transporter (TC 2.A.1.44) family.,tissue specificity:In adults, found in all tissues examined with highest expression in pancreas. In fetus, highest expression in liver and lower levels in kidney, and lung. High levels found in prostate cancer cells.,

**Subcellular Location :** Membrane ; Multi-pass membrane protein .

**Expression :** In adults, found in all tissues examined with highest expression in pancreas. In fetus, highest expression in liver and lower levels in kidney, and lung. High levels found in prostate cancer cells.

**Sort :** 16365

**No4 :** 1

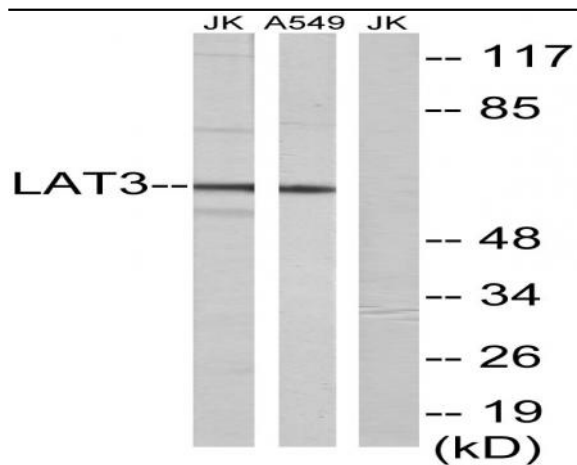
**Host :** Rabbit

**Modifications :** Unmodified

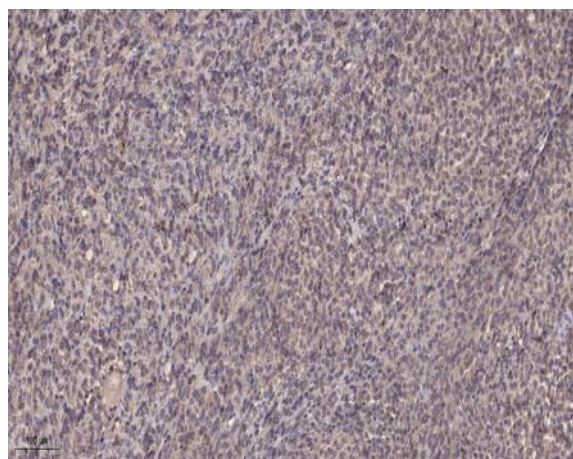
## Products Images



Western Blot analysis of various cells using SLC43A1 Polyclonal Antibody



Western blot analysis of lysates from A549 and Jurkat cells, using LAT3 Antibody. The lane on the right is blocked with the synthesized peptide.



Immunohistochemical analysis of paraffin-embedded human Colon cancer. 1, Antibody was diluted at 1:200(4° overnight). 2, Tris-EDTA,pH9.0 was used for antigen retrieval. 3,Secondary antibody was diluted at 1:200(room temperature, 45min).