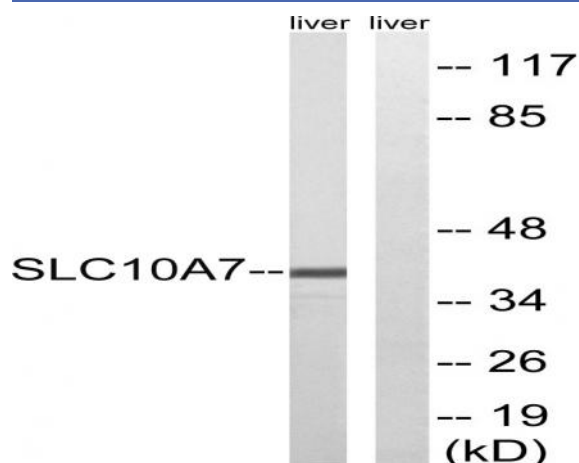


SLC10A7 Polyclonal Antibody

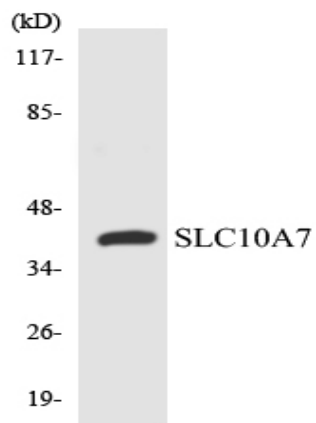
Catalog No :	YT4313
Reactivity :	Human;Mouse;Rat
Applications :	WB;ELISA;IHC
Target :	SLC10A7
Gene Name :	SLC10A7
Protein Name :	Sodium/bile acid cotransporter 7
Human Gene Id :	84068
Human Swiss Prot No :	Q0GE19
Mouse Gene Id :	76775
Mouse Swiss Prot No :	Q5PT53
Rat Gene Id :	291942
Rat Swiss Prot No :	Q5PT50
Immunogen :	The antiserum was produced against synthesized peptide derived from human SLC10A7. AA range:168-217
Specificity :	SLC10A7 Polyclonal Antibody detects endogenous levels of SLC10A7 protein.
Formulation :	Liquid in PBS containing 50% glycerol, 0.5% BSA and 0.02% sodium azide.
Source :	Polyclonal, Rabbit,IgG
Dilution :	WB 1:500-2000;IHC 1:50-300; ELISA 2000-20000
Purification :	The antibody was affinity-purified from rabbit antiserum by affinity-chromatography using epitope-specific immunogen.

Concentration :	1 mg/ml
Storage Stability :	-15°C to -25°C/1 year(Do not lower than -25°C)
Observed Band :	39kD
Background :	similarity:Belongs to the sodium:bile acid symporter family.,
Function :	similarity:Belongs to the sodium:bile acid symporter family.,
Subcellular Location :	Cell membrane ; Multi-pass membrane protein . Endoplasmic reticulum membrane ; Multi-pass membrane protein . Golgi apparatus membrane .
Expression :	Widely expressed (PubMed:15932064, PubMed:17628207). Expressed at high levels in liver and at lower levels in prostate, placenta, kidney, heart, lung, thymus and spleen (PubMed:15932064, PubMed:17628207). Strongly expressed in testis and also detected in brain, ovary, colon and small intestine (PubMed:17628207). Weakly expressed in testis and not detected in brain, ovary, colon or small intestine (PubMed:15932064). Isoform 1: Expressed in liver, testis and placenta (PubMed:17628207). Isoform 4: Expressed in liver, testis and placenta (PubMed:17628207).
Sort :	16362
No4 :	1
Host :	Rabbit
Modifications :	Unmodified

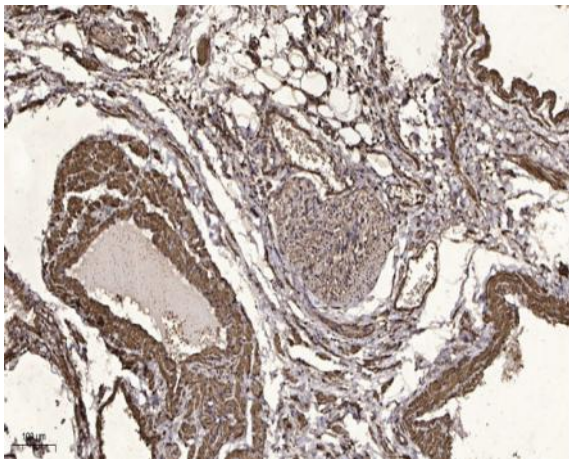
Products Images



Western blot analysis of lysates from mouse liver, using SLC10A7 Antibody. The lane on the right is blocked with the synthesized peptide.



Western blot analysis of the lysates from 293 cells using SLC10A7 antibody.



Immunohistochemical analysis of paraffin-embedded human oophoroma. 1, Antibody was diluted at 1:200(4° overnight). 2, Tris-EDTA,pH9.0 was used for antigen retrieval. 3,Secondary antibody was diluted at 1:200(room temperature, 45min).