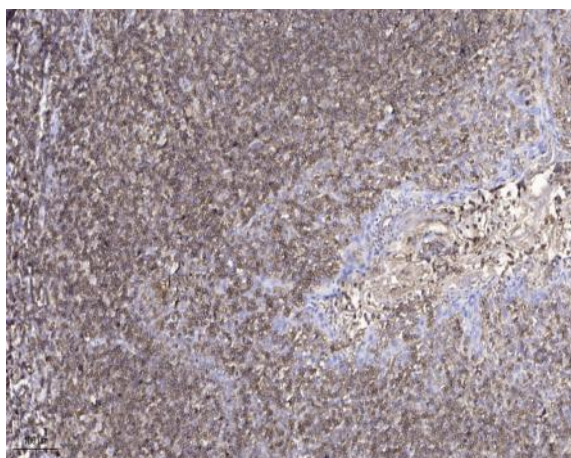


SLC10A4 Polyclonal Antibody

Catalog No :	YT4312
Reactivity :	Human;Rat;Mouse;
Applications :	IHC;IF;ELISA
Target :	SLC10A4
Gene Name :	SLC10A4
Protein Name :	Sodium/bile acid cotransporter 4
Human Gene Id :	201780
Human Swiss Prot No :	Q96EP9
Mouse Swiss Prot No :	Q3UEZ8
Immunogen :	Synthesized peptide derived from SLC10A4 . at AA range: 340-420
Specificity :	SLC10A4 Polyclonal Antibody detects endogenous levels of SLC10A4 protein.
Formulation :	Liquid in PBS containing 50% glycerol, 0.5% BSA and 0.02% sodium azide.
Source :	Polyclonal, Rabbit,IgG
Dilution :	IHC 1:100 - 1:300. ELISA: 1:10000.. IF 1:50-200
Purification :	The antibody was affinity-purified from rabbit antiserum by affinity-chromatography using epitope-specific immunogen.
Concentration :	1 mg/ml
Storage Stability :	-15°C to -25°C/1 year(Do not lower than -25°C)
Molecularweight :	47kD

Background :	<u>similarity:Belongs to the sodium:bile acid symporter family.,</u>
Function :	<u>similarity:Belongs to the sodium:bile acid symporter family.,</u>
Subcellular Location :	<u>Cell membrane ; Multi-pass membrane protein .</u>
Expression :	<u>Highly expressed in brain and small intestine, and moderately expressed in colon, heart, prostate, and testis. Very low levels were detected in kidney, liver, ovary, placenta, spleen, and thymus.</u>
Sort :	<u>16361</u>
No4 :	<u>1</u>
Host :	<u>Rabbit</u>
Modifications :	<u>Unmodified</u>

Products Images



Immunohistochemical analysis of paraffin-embedded human tonsil. 1, Antibody was diluted at 1:200(4° overnight). 2, Tris-EDTA,pH9.0 was used for antigen retrieval. 3,Secondary antibody was diluted at 1:200(room temperature, 45min).