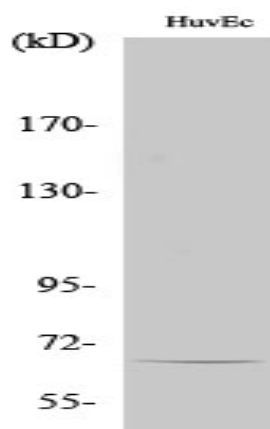


TBX15/18 Polyclonal Antibody

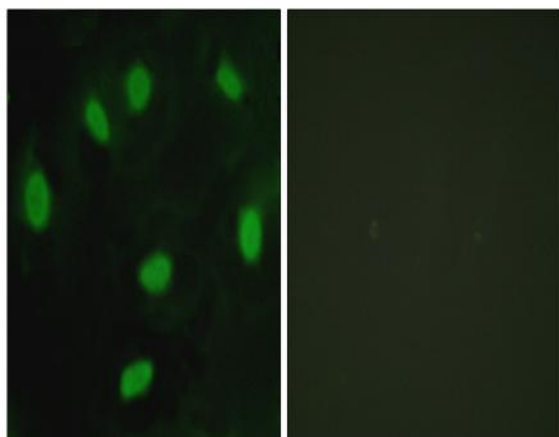
Catalog No :	YT4566
Reactivity :	Human;Mouse
Applications :	WB;IHC;IF;ELISA
Target :	TBX15/18
Gene Name :	TBX15/TBX18
Protein Name :	T-box transcription factor TBX15/18
Human Gene Id :	9096
Human Swiss Prot No :	O95935/Q96SF7
Mouse Gene Id :	76365/21384
Immunogen :	The antiserum was produced against synthesized peptide derived from human TBX15/18. AA range:161-210
Specificity :	TBX15/18 Polyclonal Antibody detects endogenous levels of TBX15/18 protein.
Formulation :	Liquid in PBS containing 50% glycerol, 0.5% BSA and 0.02% sodium azide.
Source :	Polyclonal, Rabbit,IgG
Dilution :	WB 1:500 - 1:2000. IHC 1:100 - 1:300. IF 1:200 - 1:1000. ELISA: 1:20000. Not yet tested in other applications.
Purification :	The antibody was affinity-purified from rabbit antiserum by affinity-chromatography using epitope-specific immunogen.
Concentration :	1 mg/ml
Storage Stability :	-15°C to -25°C/1 year(Do not lower than -25°C)
Observed Band :	64kD

Background :	T-box 18(TBX18) Homo sapiens This genes codes for a member of an evolutionarily conserved family of transcription factors that plays a crucial role in embryonic development. The family is characterized by the presence of the DNA-binding T-box domain and is divided into five sub-families based on sequence conservation in this domain. The encoded protein belongs to the vertebrate specific Tbx1 sub-family. The protein acts as a transcriptional repressor by antagonizing transcriptional activators in the T-box family. The protein forms homo- or heterodimers with other transcription factors of the T-box family or other transcription factors. [provided by RefSeq, Nov 2012],
Function :	function:Probable transcriptional regulator involved in developmental processes.,similarity:Contains 1 T-box DNA-binding domain.,
Subcellular Location :	Nucleus .
Expression :	Lung,
Sort :	16976
No4 :	1
Host :	Rabbit
Modifications :	Unmodified

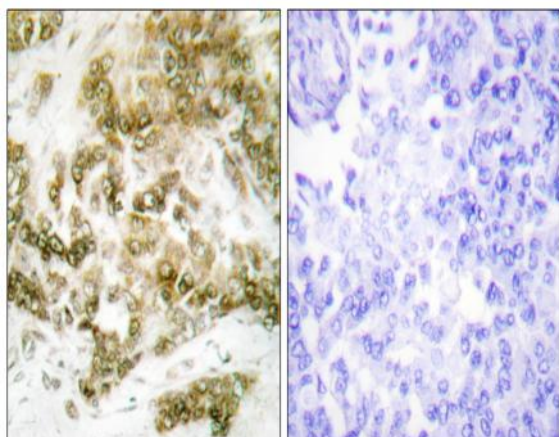
Products Images



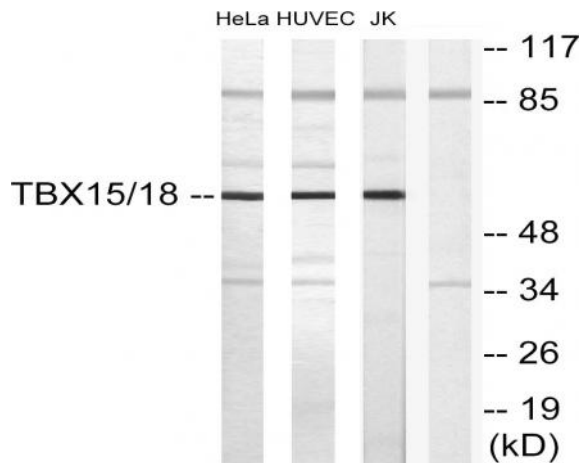
Western Blot analysis of various cells using TBX15/18 Polyclonal Antibody cells nucleus extracted by Minute TM Cytoplasmic and Nuclear Fractionation kit (SC-003, Invent biotech, MN, USA).



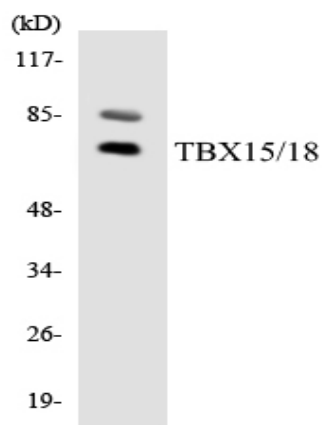
Immunofluorescence analysis of HeLa cells, using TBX15/18 Antibody. The picture on the right is blocked with the synthesized peptide.



Immunohistochemistry analysis of paraffin-embedded human breast carcinoma tissue, using TBX15/18 Antibody. The picture on the right is blocked with the synthesized peptide.



Western blot analysis of lysates from HUVEC, HeLa, and Jurkat cells, using TBX15/18 Antibody. The lane on the right is blocked with the synthesized peptide.



Western blot analysis of the lysates from HeLa cells using TBX15/18 antibody.