

Six2 Polyclonal Antibody

Catalog No :	YT4306
Reactivity :	Human;Mouse
Applications :	WB;IHC
Target :	Six2
Gene Name :	SIX2
Protein Name :	Homeobox protein SIX2
Human Gene Id :	10736
Human Swiss Prot No :	Q9NPC8
Mouse Gene Id :	20472
Mouse Swiss Prot No :	Q62232
Immunogen :	Synthesized peptide derived from Six2 . at AA range: 30-110
Specificity :	Six2 Polyclonal Antibody detects endogenous levels of Six2 protein.
Formulation :	Liquid in PBS containing 50% glycerol, 0.5% BSA and 0.02% sodium azide.
Source :	Polyclonal, Rabbit,IgG
Dilution :	WB 1:500-2000;IHC 1:50-300
Purification :	The antibody was affinity-purified from rabbit antiserum by affinity-chromatography using epitope-specific immunogen.
Concentration :	1 mg/ml
Storage Stability :	-15°C to -25°C/1 year(Do not lower than -25°C)

Observed Band : 33kD

Background : This gene is a member of the vertebrate gene family which encode proteins homologous to the Drosophila *sine oculis* homeobox protein. The encoded protein is a transcription factor which, like other members of this gene family, may be involved in limb or eye development. [provided by RefSeq, Dec 2008],

Function : function:May be involved in limb tendon and ligament development.,similarity:Belongs to the SIX/Sine oculis homeobox family.,similarity:Contains 1 homeobox DNA-binding domain.,tissue specificity:Strongly expressed in skeletal muscle.,

Subcellular Location : Nucleus .

Expression : Strongly expressed in skeletal muscle. Expressed in Wilms' tumor and in the cap mesenchyme of fetal kidney (at protein level).

Tag : hot

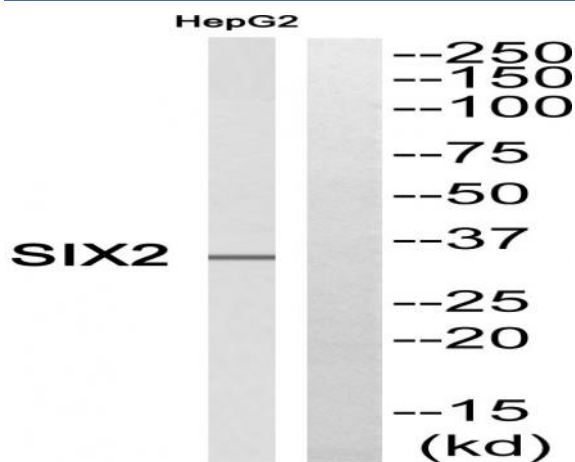
Sort : 16351

No4 : 1

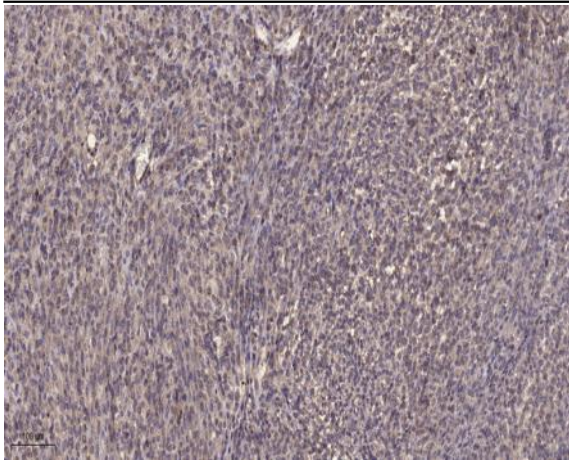
Host : Rabbit

Modifications : Unmodified

Products Images



Western blot analysis of SIX2 Antibody. The lane on the right is blocked with the SIX2 peptide.



Immunohistochemical analysis of paraffin-embedded human Colon cancer. 1, Antibody was diluted at 1:200(4° overnight). 2, Tris-EDTA,pH9.0 was used for antigen retrieval. 3,Secondary antibody was diluted at 1:200(room temperature, 45min).