

TAF I p48 Polyclonal Antibody

Catalog No :	YT4525
Reactivity :	Human;Rat
Applications :	WB;IHC;IF;ELISA
Target :	TAF I p48
Gene Name :	TAF1A
Protein Name :	TATA box-binding protein-associated factor RNA polymerase I subunit A
Human Gene Id :	9015
Human Swiss Prot No :	Q15573
Mouse Swiss Prot No :	P97357
Rat Gene Id :	360893
Rat Swiss Prot No :	Q3B7U2
Immunogen :	The antiserum was produced against synthesized peptide derived from human TAF1A. AA range:301-350
Specificity :	TAF I p48 Polyclonal Antibody detects endogenous levels of TAF I p48 protein.
Formulation :	Liquid in PBS containing 50% glycerol, 0.5% BSA and 0.02% sodium azide.
Source :	Polyclonal, Rabbit,IgG
Dilution :	WB 1:500 - 1:2000. IHC 1:100 - 1:300. ELISA: 1:20000.. IF 1:50-200
Purification :	The antibody was affinity-purified from rabbit antiserum by affinity-chromatography using epitope-specific immunogen.
Concentration :	1 mg/ml

Storage Stability : -15°C to -25°C/1 year(Do not lower than -25°C)

Observed Band : 53kD

Background : This gene encodes a subunit of the RNA polymerase I complex, Selectivity Factor I (SLI). The encoded protein is a TATA box-binding protein-associated factor that plays a role in the assembly of the RNA polymerase I preinitiation complex. Alternate splicing results in multiple transcript variants encoding multiple isoforms.[provided by RefSeq, Jan 2011],

Function : function:Component of the transcription factor SL1/TIFIB complex involved in the assembly of the PIC (preinitiation complex).,subunit:Component of the transcription factor SL1/TIFIB complex which is composed of TBP and at least TAF1A, TAF1B and TAF1C. In the complex, interacts directly with TBP, TAF1B and TAF1C. Interaction of the SL1/TIFIB subunits with TBP excludes interaction with the transcription factor IID (TFIID) subunits. This mutually exclusive binding directs the formation of promoter and RNA polymerase-selective TBP-TAF complexes.,

Subcellular Location : Nucleus.

Expression : Embryo,Skin,

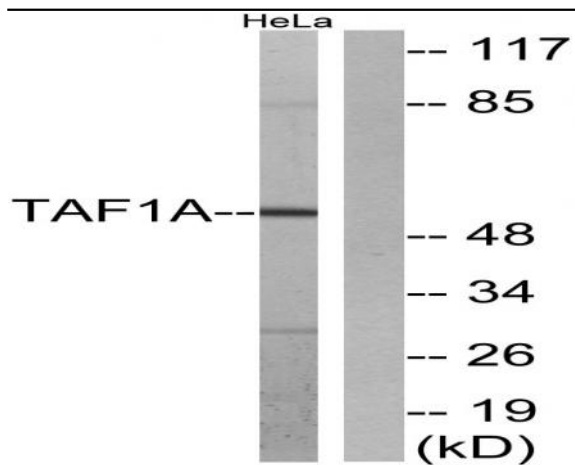
Sort : 16886

No4 : 1

Host : Rabbit

Modifications : Unmodified

Products Images



Western blot analysis of lysates from HeLa cells, using TAF1A Antibody. The lane on the right is blocked with the synthesized peptide.



Immunohistochemical analysis of paraffin-embedded human spleen. 1, Tris-EDTA, pH 9.0 was used for antigen retrieval. 2 Antibody was diluted at 1:200 (4° overnight). 3, Secondary antibody was diluted at 1:200 (room temperature, 45min).