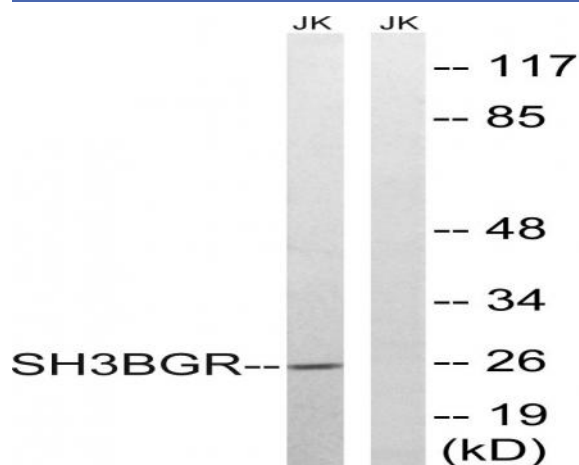


SH3BGR Polyclonal Antibody

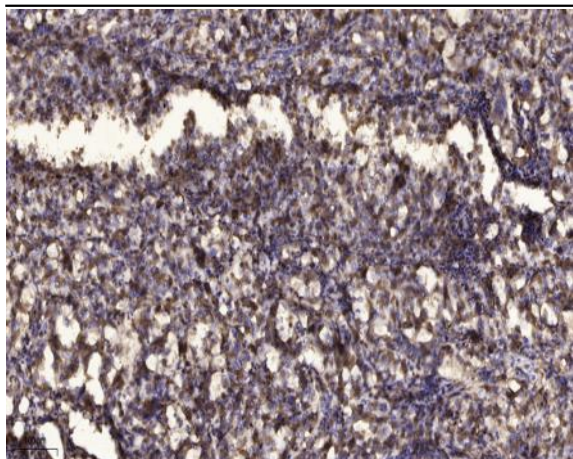
Catalog No :	YT4279
Reactivity :	Human;Mouse;Rat
Applications :	WB;IHC
Target :	SH3BGR
Gene Name :	SH3BGR
Protein Name :	SH3 domain-binding glutamic acid-rich protein
Human Gene Id :	6450
Human Swiss Prot No :	P55822
Mouse Gene Id :	50795
Mouse Swiss Prot No :	Q9WUZ7
Immunogen :	The antiserum was produced against synthesized peptide derived from human SH3BGR. AA range:81-130
Specificity :	SH3BGR Polyclonal Antibody detects endogenous levels of SH3BGR protein.
Formulation :	Liquid in PBS containing 50% glycerol, 0.5% BSA and 0.02% sodium azide.
Source :	Polyclonal, Rabbit,IgG
Dilution :	WB 1:500-2000;IHC 1:50-300
Purification :	The antibody was affinity-purified from rabbit antiserum by affinity-chromatography using epitope-specific immunogen.
Concentration :	1 mg/ml
Storage Stability :	-15°C to -25°C/1 year(Do not lower than -25°C)

Observed Band :	26kD
Background :	caution:It is uncertain whether Met-1 or Met-64 is the initiator.,similarity:Belongs to the SH3BGR family.,tissue specificity:Expressed in heart and skeletal muscle.,
Function :	caution:It is uncertain whether Met-1 or Met-64 is the initiator.,similarity:Belongs to the SH3BGR family.,tissue specificity:Expressed in heart and skeletal muscle.,
Subcellular Location :	cytosol,
Expression :	Expressed in heart and skeletal muscle.
Sort :	16286
No4 :	1
Host :	Rabbit
Modifications :	Unmodified

Products Images



Western blot analysis of lysates from Jurkat cells, using SH3BGR Antibody. The lane on the right is blocked with the synthesized peptide.



Immunohistochemical analysis of paraffin-embedded human Squamous cell carcinoma of lung. 1, Antibody was diluted at 1:200(4° overnight). 2, Tris-EDTA,pH9.0 was used for antigen retrieval. 3,Secondary antibody was diluted at 1:200(room temperature, 45min).