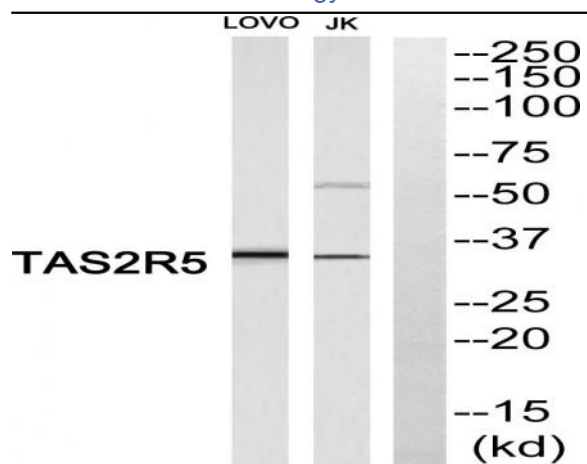


T2R5 Polyclonal Antibody

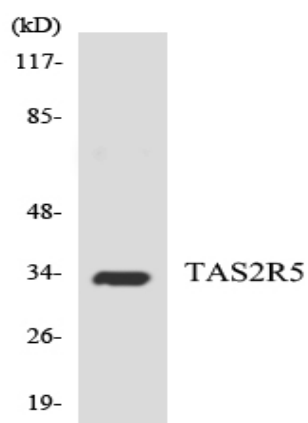
Catalog No :	YT4514
Reactivity :	Human;Rat;Mouse;
Applications :	WB;ELISA
Target :	T2R5
Fields :	>>Taste transduction
Gene Name :	TAS2R5
Protein Name :	Taste receptor type 2 member 5
Human Gene Id :	54429
Human Swiss Prot No :	Q9NYW4
Immunogen :	The antiserum was produced against synthesized peptide derived from human TAS2R5. AA range:178-227
Specificity :	T2R5 Polyclonal Antibody detects endogenous levels of T2R5 protein.
Formulation :	Liquid in PBS containing 50% glycerol, 0.5% BSA and 0.02% sodium azide.
Source :	Polyclonal, Rabbit,IgG
Dilution :	WB 1:500 - 1:2000. ELISA: 1:5000. Not yet tested in other applications.
Purification :	The antibody was affinity-purified from rabbit antiserum by affinity-chromatography using epitope-specific immunogen.
Concentration :	1 mg/ml
Storage Stability :	-15°C to -25°C/1 year(Do not lower than -25°C)
Observed Band :	35kD

Cell Pathway :	Taste transduction;
Background :	This gene encodes a bitter taste receptor; bitter taste receptors are members of the G protein-coupled receptor superfamily and are specifically expressed by taste receptor cells of the tongue and palate epithelia. Each of these apparently intronless taste receptor genes encodes a 7-transmembrane receptor protein, functioning as a bitter taste receptor. This gene is clustered with another 3 candidate taste receptor genes on chromosome 7 and is genetically linked to loci that influence bitter perception. [provided by RefSeq, Jul 2008],
Function :	function:Receptor that may play a role in the perception of bitterness and is gustducin-linked. May play a role in sensing the chemical composition of the gastrointestinal content. The activity of this receptor may stimulate alpha gustducin, mediate PLC-beta-2 activation and lead to the gating of TRPM5.,miscellaneous:Most taste cells may be activated by a limited number of bitter compounds; individual taste cells can discriminate among bitter stimuli.,similarity:Belongs to the G-protein coupled receptor T2R family.,tissue specificity:Expressed in subsets of taste receptor cells of the tongue and palate epithelium and exclusively in gustducin-positive cells.,
Subcellular Location :	Membrane; Multi-pass membrane protein.
Expression :	Expressed in subsets of taste receptor cells of the tongue and palate epithelium and exclusively in gustducin-positive cells.
Sort :	16864
No4 :	1
Host :	Rabbit
Modifications :	Unmodified

Products Images



Western blot analysis of TAS2R5 Antibody. The lane on the right is blocked with the TAS2R5 peptide.



Western blot analysis of the lysates from HepG2 cells using TAS2R5 antibody.