

T2R45 Polyclonal Antibody

Catalog No :	YT4511
Reactivity :	Human;Rat;Mouse;
Applications :	WB;ELISA
Target :	T2R45
Fields :	>>Taste transduction
Gene Name :	TAS2R45
Protein Name :	Taste receptor type 2 member 45
Human Gene Id :	259291
Human Swiss Prot No :	P59539
Immunogen :	The antiserum was produced against synthesized peptide derived from human TAS2R45. AA range:221-270
Specificity :	T2R45 Polyclonal Antibody detects endogenous levels of T2R45 protein.
Formulation :	Liquid in PBS containing 50% glycerol, 0.5% BSA and 0.02% sodium azide.
Source :	Polyclonal, Rabbit,IgG
Dilution :	WB 1:500 - 1:2000. ELISA: 1:5000. Not yet tested in other applications.
Purification :	The antibody was affinity-purified from rabbit antiserum by affinity-chromatography using epitope-specific immunogen.
Concentration :	1 mg/ml
Storage Stability :	-15°C to -25°C/1 year(Do not lower than -25°C)
Observed Band :	35kD

Cell Pathway : Taste transduction;

Background : function:Receptor that may play a role in the perception of bitterness and is gustducin-linked. May play a role in sensing the chemical composition of the gastrointestinal content. The activity of this receptor may stimulate alpha gustducin, mediate PLC-beta-2 activation and lead to the gating of TRPM5.,miscellaneous:Most taste cells may be activated by a limited number of bitter compounds; individual taste cells can discriminate among bitter stimuli.,similarity:Belongs to the G-protein coupled receptor T2R family.,tissue specificity:Expressed in subsets of taste receptor cells of the tongue and exclusively in gustducin-positive cells.,

Function : function:Receptor that may play a role in the perception of bitterness and is gustducin-linked. May play a role in sensing the chemical composition of the gastrointestinal content. The activity of this receptor may stimulate alpha gustducin, mediate PLC-beta-2 activation and lead to the gating of TRPM5.,miscellaneous:Most taste cells may be activated by a limited number of bitter compounds; individual taste cells can discriminate among bitter stimuli.,similarity:Belongs to the G-protein coupled receptor T2R family.,tissue specificity:Expressed in subsets of taste receptor cells of the tongue and exclusively in gustducin-positive cells.,

Subcellular Location : Membrane; Multi-pass membrane protein.

Expression : Expressed in subsets of taste receptor cells of the tongue and exclusively in gustducin-positive cells.

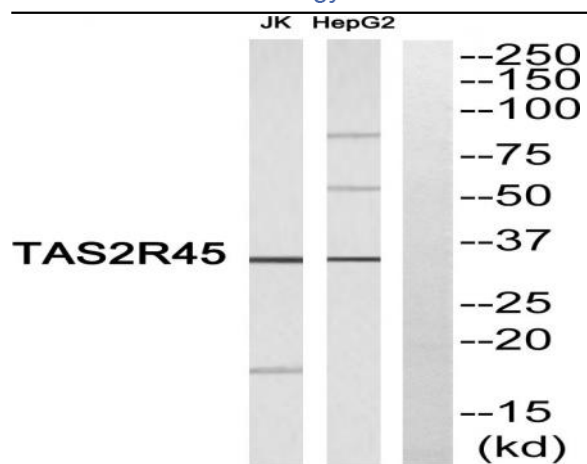
Sort : 16861

No4 : 1

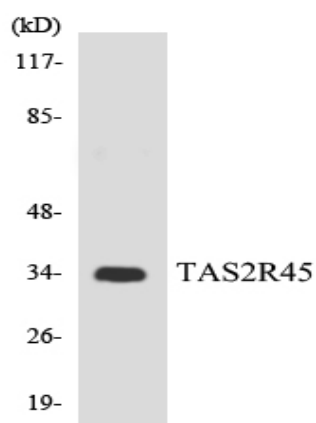
Host : Rabbit

Modifications : Unmodified

Products Images



Western blot analysis of the lysates from HepG2 cells using TAS2R45 antibody.



Western blot analysis of the lysates from HepG2 cells using TAS2R45 antibody.