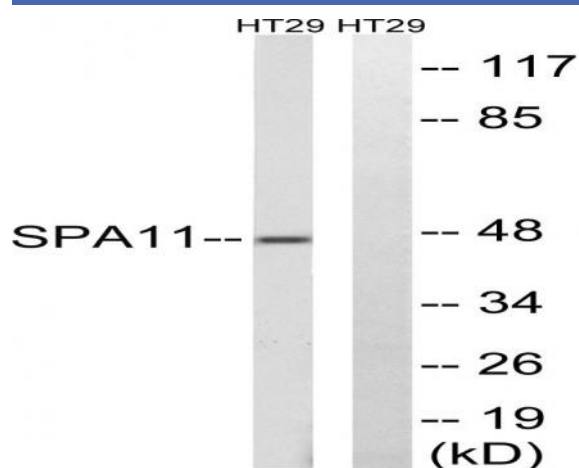


## Serpin A11 Polyclonal Antibody

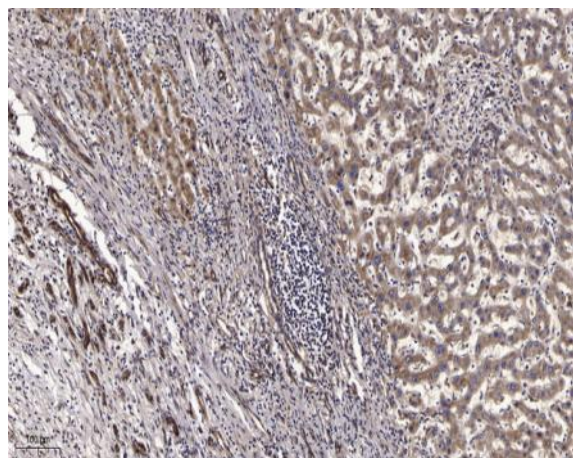
<b>Catalog No :</b>	YT4257
<b>Reactivity :</b>	Human;Rat;Mouse;
<b>Applications :</b>	WB;IHC
<b>Target :</b>	Serpin A11
<b>Gene Name :</b>	SERPINA11
<b>Protein Name :</b>	Serpin A11
<b>Human Gene Id :</b>	256394
<b>Human Swiss Prot No :</b>	Q86U17
<b>Mouse Swiss Prot No :</b>	Q8CIE0
<b>Immunogen :</b>	The antiserum was produced against synthesized peptide derived from human SERPINA11. AA range:191-240
<b>Specificity :</b>	Serpin A11 Polyclonal Antibody detects endogenous levels of Serpin A11 protein.
<b>Formulation :</b>	Liquid in PBS containing 50% glycerol, 0.5% BSA and 0.02% sodium azide.
<b>Source :</b>	Polyclonal, Rabbit,IgG
<b>Dilution :</b>	WB 1:500-2000;IHC 1:50-300
<b>Purification :</b>	The antibody was affinity-purified from rabbit antiserum by affinity-chromatography using epitope-specific immunogen.
<b>Concentration :</b>	1 mg/ml
<b>Storage Stability :</b>	-15°C to -25°C/1 year(Do not lower than -25°C)
<b>Observed Band :</b>	47kD

<b>Background :</b>	similarity:Belongs to the serpin family.,
<b>Function :</b>	similarity:Belongs to the serpin family.,
<b>Subcellular Location :</b>	Secreted .
<b>Expression :</b>	Fetal liver,
<b>Sort :</b>	16252
<b>No4 :</b>	1
<b>Host :</b>	Rabbit
<b>Modifications :</b>	Unmodified

## Products Images



Western blot analysis of lysates from HT-29 cells, using SERPINA11 Antibody. The lane on the right is blocked with the synthesized peptide.



Immunohistochemical analysis of paraffin-embedded human liver cancer. 1, Antibody was diluted at 1:200(4° overnight). 2, Tris-EDTA,pH9.0 was used for antigen retrieval. 3,Secondary antibody was diluted at 1:200(room temperature, 45min).