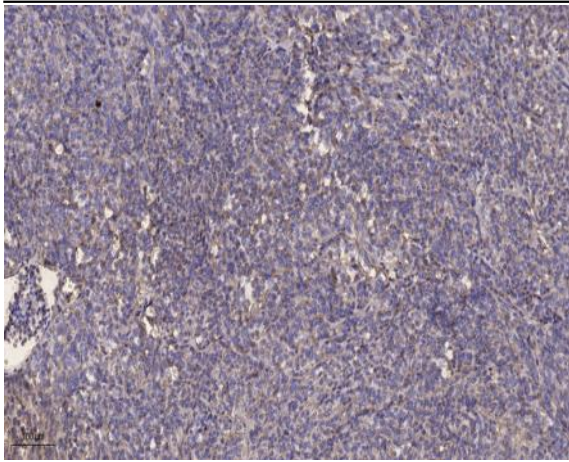


Serine racemase Polyclonal Antibody

Catalog No :	YT4256
Reactivity :	Human;Rat;Mouse;
Applications :	IHC;IF;ELISA
Target :	Serine racemase
Fields :	>>Glycine, serine and threonine metabolism;>>D-Amino acid metabolism;>>Metabolic pathways
Gene Name :	SRR
Protein Name :	Serine racemase
Human Gene Id :	63826
Human Swiss Prot No :	Q9GZT4
Mouse Swiss Prot No :	Q9QZX7
Immunogen :	Synthesized peptide derived from Serine racemase . at AA range: 90-170
Specificity :	Serine racemase Polyclonal Antibody detects endogenous levels of Serine racemase protein.
Formulation :	Liquid in PBS containing 50% glycerol, 0.5% BSA and 0.02% sodium azide.
Source :	Polyclonal, Rabbit,IgG
Dilution :	IHC 1:100 - 1:300. ELISA: 1:5000.. IF 1:50-200
Purification :	The antibody was affinity-purified from rabbit antiserum by affinity-chromatography using epitope-specific immunogen.
Concentration :	1 mg/ml
Storage Stability :	-15 °C to -25 °C/1 year(Do not lower than -25 °C)

Molecularweight :	37kD
Cell Pathway :	Glycine; serine and threonine metabolism;
Background :	catalytic activity:L-serine = D-serine.,cofactor:Pyridoxal phosphate.,function:Catalyzes the synthesis of D-serine from L-serine.,similarity:Belongs to the serine/threonine dehydratase family.,tissue specificity:Brain: expressed at high levels in hippocampus and corpus callosum, intermediate levels in substantia nigra and caudate, and low levels in amygdala, thalamus, and subthalamic nuclei. Expressed in heart, skeletal muscle, kidney and liver.,
Function :	catalytic activity:L-serine = D-serine.,cofactor:Pyridoxal phosphate.,function:Catalyzes the synthesis of D-serine from L-serine.,similarity:Belongs to the serine/threonine dehydratase family.,tissue specificity:Brain: expressed at high levels in hippocampus and corpus callosum, intermediate levels in substantia nigra and caudate, and low levels in amygdala, thalamus, and subthalamic nuclei. Expressed in heart, skeletal muscle, kidney and liver.,
Subcellular Location :	cytoplasm,plasma membrane,neuronal cell body,apical part of cell,
Expression :	Brain: expressed at high levels in hippocampus and corpus callosum, intermediate levels in substantia nigra and caudate, and low levels in amygdala, thalamus, and subthalamic nuclei. Expressed in heart, skeletal muscle, kidney and liver.
Sort :	16244
No4 :	1
Host :	Rabbit
Modifications :	Unmodified

Products Images



Immunohistochemical analysis of paraffin-embedded human Colon cancer. 1, Antibody was diluted at 1:200(4° overnight). 2, Tris-EDTA,pH9.0 was used for antigen retrieval. 3,Secondary antibody was diluted at 1:200(room temperature, 45min).