

Septin 7 Polyclonal Antibody

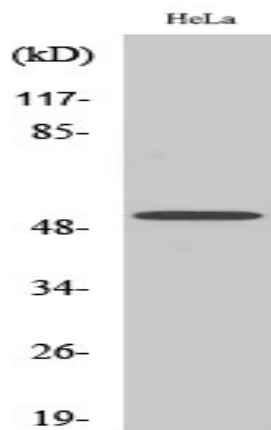
Catalog No :	YT4251
Reactivity :	Human;Mouse;Rat
Applications :	WB;IHC;IF;ELISA
Target :	Septin 7
Fields :	>>Shigellosis
Gene Name :	SEPT7
Protein Name :	Septin-7
Human Gene Id :	989
Human Swiss Prot No :	Q16181
Mouse Gene Id :	235072
Mouse Swiss Prot No :	O55131
Rat Gene Id :	64551
Rat Swiss Prot No :	Q9WVC0
Immunogen :	The antiserum was produced against synthesized peptide derived from human SEPT7. AA range:350-399
Specificity :	Septin 7 Polyclonal Antibody detects endogenous levels of Septin 7 protein.
Formulation :	Liquid in PBS containing 50% glycerol, 0.5% BSA and 0.02% sodium azide.
Source :	Polyclonal, Rabbit,IgG
Dilution :	WB 1:500 - 1:2000.IHC:1:50-300 ELISA: 1:20000.. IF 1:50-200

Purification :	The antibody was affinity-purified from rabbit antiserum by affinity-chromatography using epitope-specific immunogen.
Concentration :	1 mg/ml
Storage Stability :	-15°C to -25°C/1 year(Do not lower than -25°C)
Observed Band :	48kD
Background :	septin 7(SEPT7) Homo sapiens This gene encodes a protein that is highly similar to the CDC10 protein of Saccharomyces cerevisiae. The protein also shares similarity with Diff 6 of Drosophila and with H5 of mouse. Each of these similar proteins, including the yeast CDC10, contains a GTP-binding motif. The yeast CDC10 protein is a structural component of the 10 nm filament which lies inside the cytoplasmic membrane and is essential for cytokinesis. This human protein functions in gliomagenesis and in the suppression of glioma cell growth, and it is required for the association of centromere-associated protein E with the kinetochore. Alternative splicing results in multiple transcript variants. Several related pseudogenes have been identified on chromosomes 5, 7, 9, 10, 11, 14, 17 and 19. [provided by RefSeq, Jul 2011],
Function :	function:Required for normal progress through mitosis. Involved in cytokinesis. Required for normal association of CENPE with the kinetochore.,similarity:Belongs to the septin family.,subcellular location:Distributed throughout the cytoplasm in prometaphase cells. Associated with the spindle during metaphase. Associated with the central spindle and at the cleavage furrow in anaphase cells. Detected at the midbody in telophase.,subunit:Heterohexamer composed of two heterotrimers containing one copy each of SEPT2, SEPT6 and SEPT7. The asymmetrical heterotrimers associate head-to-head to form a hexameric unit that assembles into filaments. Interacts directly with CENPE and links CENPE to septin filaments composed of SEPT2, SEPT6 and SEPT7.,
Subcellular Location :	Cytoplasm . Chromosome, centromere, kinetochore . Cytoplasm, cytoskeleton, spindle . Cleavage furrow . Midbody . Cytoplasm, cytoskeleton, cilium axoneme . Cell projection, cilium, flagellum . Distributed throughout the cytoplasm in prometaphase cells. Associated with the spindle during metaphase. Associated with the central spindle and at the cleavage furrow in anaphase cells. Detected at the midbody in telophase. Associated with actin stress fibers (By similarity). Found in the sperm annulus (PubMed:25588830). .
Expression :	Widely expressed.
Sort :	16238
No4 :	1

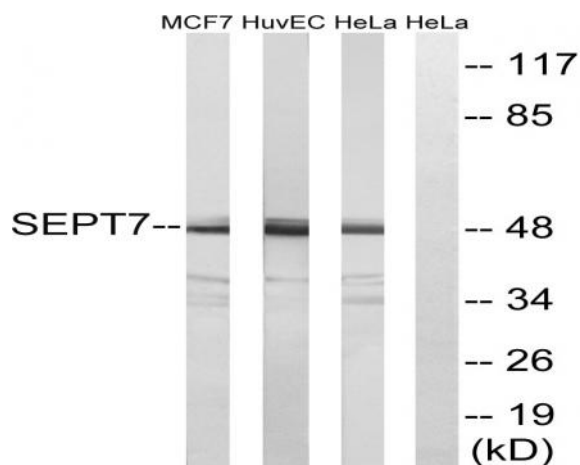
Host : Rabbit

Modifications : Unmodified

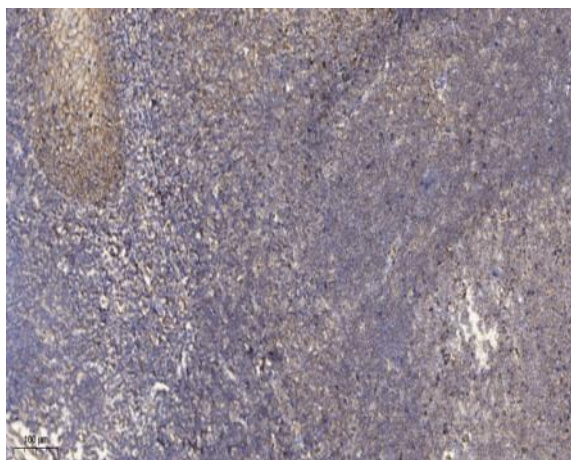
Products Images



Western Blot analysis of various cells using Septin 7 Polyclonal Antibody



Western blot analysis of lysates from HeLa, HUVEC, and MCF-7 cells, using SEPT7 Antibody. The lane on the right is blocked with the synthesized peptide.



Immunohistochemical analysis of paraffin-embedded human tonsil. 1, Antibody was diluted at 1:200(4° overnight). 2, Tris-EDTA,pH9.0 was used for antigen retrieval. 3,Secondary antibody was diluted at 1:200(room temperature, 30min).