

Septin 5 Polyclonal Antibody

Catalog No :	YT4249
Reactivity :	Human;Mouse;Rat
Applications :	WB;IHC
Target :	Septin 5
Fields :	>>Parkinson disease;>>Pathways of neurodegeneration - multiple diseases
Gene Name :	SEPT5
Protein Name :	Septin-5
Human Gene Id :	5413
Human Swiss Prot No :	Q99719
Mouse Gene Id :	18951
Mouse Swiss Prot No :	Q9Z2Q6
Rat Gene Id :	116728
Rat Swiss Prot No :	Q9JJM9
Immunogen :	Synthesized peptide derived from Septin 5 . at AA range: 180-260
Specificity :	Septin 5 Polyclonal Antibody detects endogenous levels of Septin 5 protein.
Formulation :	Liquid in PBS containing 50% glycerol, 0.5% BSA and 0.02% sodium azide.
Source :	Polyclonal, Rabbit,IgG
Dilution :	WB 1:500-2000;IHC 1:50-300
Purification :	The antibody was affinity-purified from rabbit antiserum by affinity-

chromatography using epitope-specific immunogen.

Concentration : 1 mg/ml

Storage Stability : -15°C to -25°C/1 year(Do not lower than -25°C)

Observed Band : 42kD

Cell Pathway : Parkinson's disease;

Background : septin 5(SEPT5) Homo sapiens This gene is a member of the septin gene family of nucleotide binding proteins, originally described in yeast as cell division cycle regulatory proteins. Septins are highly conserved in yeast, Drosophila, and mouse and appear to regulate cytoskeletal organization. Disruption of septin function disturbs cytokinesis and results in large multinucleate or polyploid cells. This gene is mapped to 22q11, the region frequently deleted in DiGeorge and velocardiofacial syndromes. A translocation involving the MLL gene and this gene has also been reported in patients with acute myeloid leukemia. Alternative splicing results in multiple transcript variants. The presence of a non-consensus polyA signal (AACAAAT) in this gene also results in read-through transcription into the downstream neighboring gene (GP1BB; platelet glycoprotein Ib), whereby larger, non-coding transcripts are produced. [provided by RefSeq, Dec 2010],

Function : function:Involved in cytokinesis .,similarity:Belongs to the septin family.,subunit:May assemble into a multicomponent structure.,

Subcellular Location : Cytoplasm . Cytoplasm, cytoskeleton . In platelets, found in areas surrounding alpha-granules.

Expression : Expressed at high levels in the CNS, as well as in heart and platelets (at protein level).

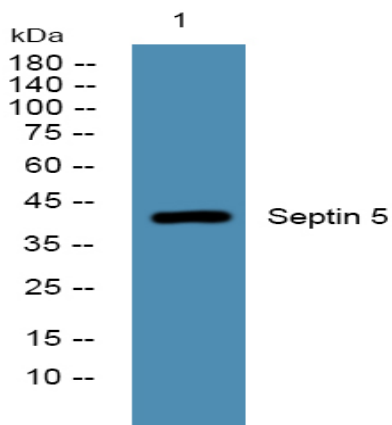
Sort : 16236

No4 : 1

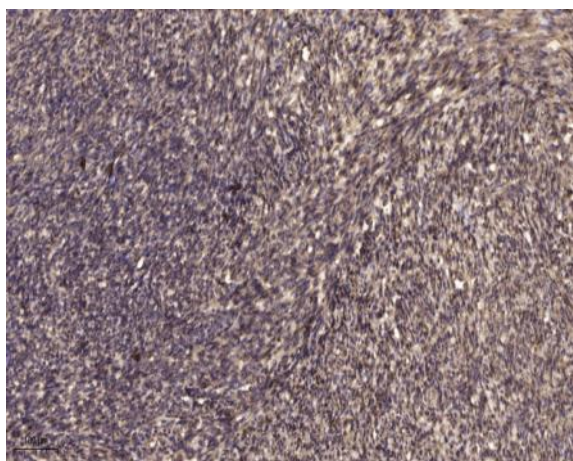
Host : Rabbit

Modifications : Unmodified

Products Images



Western blot analysis of lysates from DU145 cells, primary antibody was diluted at 1:1000, 4° over night



Immunohistochemical analysis of paraffin-embedded human uterus. 1, Antibody was diluted at 1:200(4° overnight). 2, Tris-EDTA,pH9.0 was used for antigen retrieval. 3,Secondary antibody was diluted at 1:200(room temperature, 45min).