

## Septin 3 Polyclonal Antibody

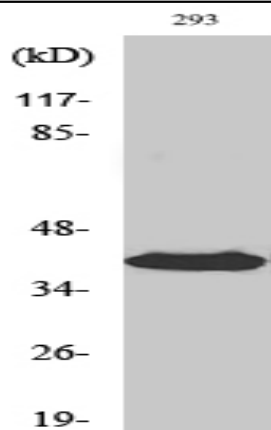
<b>Catalog No :</b>	YT4248
<b>Reactivity :</b>	Human;Mouse;Rat
<b>Applications :</b>	WB;ELISA;IHC
<b>Target :</b>	Septin 3
<b>Fields :</b>	>>Bacterial invasion of epithelial cells;>>Shigellosis
<b>Gene Name :</b>	SEPT3
<b>Protein Name :</b>	Neuronal-specific septin-3
<b>Human Gene Id :</b>	55964
<b>Human Swiss Prot No :</b>	Q9UH03
<b>Mouse Gene Id :</b>	24050
<b>Mouse Swiss Prot No :</b>	Q9Z1S5
<b>Rat Gene Id :</b>	56003
<b>Rat Swiss Prot No :</b>	Q9WU34
<b>Immunogen :</b>	The antiserum was produced against synthesized peptide derived from human SEPT3. AA range:136-185
<b>Specificity :</b>	Septin 3 Polyclonal Antibody detects endogenous levels of Septin 3 protein.
<b>Formulation :</b>	Liquid in PBS containing 50% glycerol, 0.5% BSA and 0.02% sodium azide.
<b>Source :</b>	Polyclonal, Rabbit,IgG
<b>Dilution :</b>	WB 1:500-2000;IHC 1:50-300; ELISA 2000-20000

---

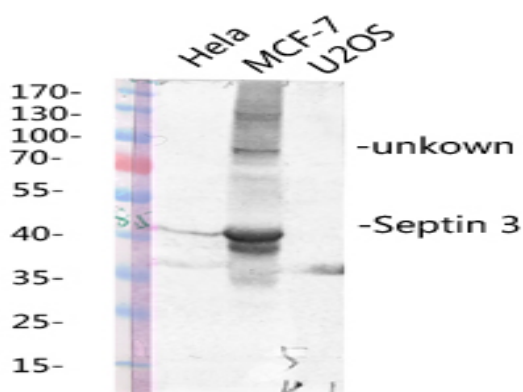
<b>Purification :</b>	The antibody was affinity-purified from rabbit antiserum by affinity-chromatography using epitope-specific immunogen.
<b>Concentration :</b>	1 mg/ml
<b>Storage Stability :</b>	-15°C to -25°C/1 year(Do not lower than -25°C)
<b>Observed Band :</b>	41kD
<b>Background :</b>	septin 3(SEPT3) Homo sapiens This gene belongs to the septin family of GTPases. Members of this family are required for cytokinesis. Expression is upregulated by retinoic acid in a human teratocarcinoma cell line. The specific function of this gene has not been determined. Alternative splicing of this gene results in two transcript variants encoding different isoforms. [provided by RefSeq, Jul 2008],
<b>Function :</b>	function:Involved in cytokinesis .,induction:Up-regulated during neuronal differentiation.,PTM:Phosphorylated by PKG on serine residues. Phosphorylated by PKG on Ser-91.,similarity:Belongs to the septin family.,subcellular location:Localizes in synaptosomes at dendritic synapses of neurons. Localizes within presynaptic terminals of neurons.,subunit:May assemble into a multicomponent structure.,tissue specificity:Brain specific.,
<b>Subcellular Location :</b>	Cytoplasm. Cytoplasm, cytoskeleton . Cell junction, synapse .
<b>Expression :</b>	Brain-specific.
<b>Sort :</b>	16235
<b>No4 :</b>	1
<b>Host :</b>	Rabbit
<b>Modifications :</b>	Unmodified

---

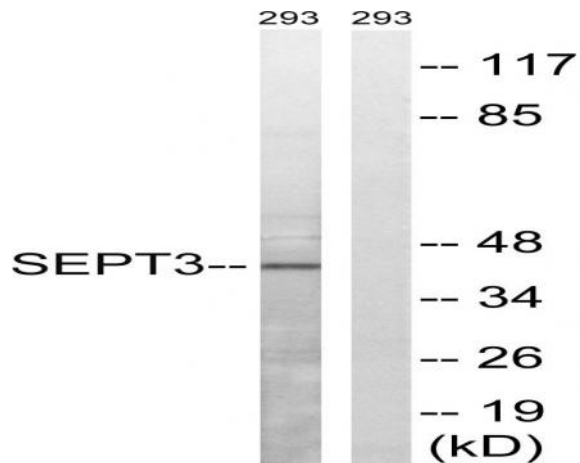
## Products Images



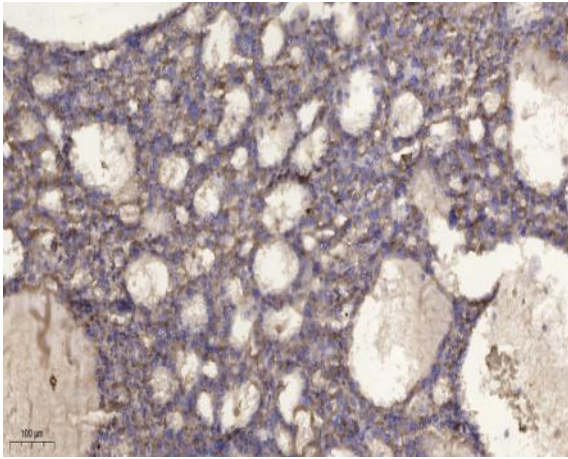
Western Blot analysis of various cells using Septin 3 Polyclonal Antibody diluted at 1:1000



Western blot analysis of various lysis using Septin 3 Polyclonal Antibody diluted at 1:1000. Secondary antibody(catalog#:RS0002) was diluted at 1:20000



Western blot analysis of lysates from 293 cells, using SEPT3 Antibody. The lane on the right is blocked with the synthesized peptide.



Immunohistochemical analysis of paraffin-embedded human liver cancer. 1, Antibody was diluted at 1:200(4° overnight). 2, Tris-EDTA,pH9.0 was used for antigen retrieval. 3,Secondary antibody was diluted at 1:200(room temperature, 45min).