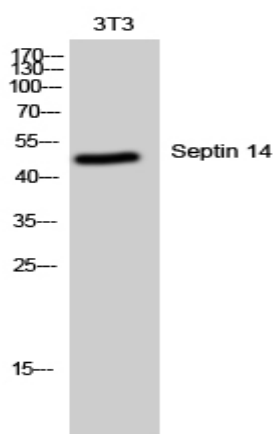


## Septin 14 Polyclonal Antibody

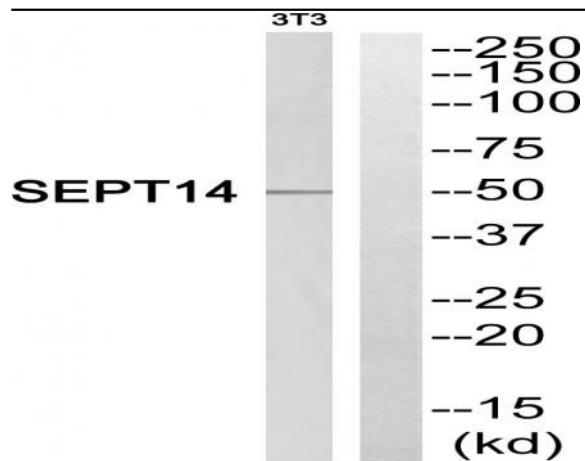
<b>Catalog No :</b>	YT4246
<b>Reactivity :</b>	Human;Mouse
<b>Applications :</b>	WB;IHC
<b>Target :</b>	Septin 14
<b>Gene Name :</b>	SEPT14
<b>Protein Name :</b>	Septin-14
<b>Human Gene Id :</b>	346288
<b>Human Swiss Prot No :</b>	Q6ZU15
<b>Mouse Swiss Prot No :</b>	Q9DA97
<b>Immunogen :</b>	The antiserum was produced against synthesized peptide derived from human SEPT14. AA range:341-390
<b>Specificity :</b>	Septin 14 Polyclonal Antibody detects endogenous levels of Septin 14 protein.
<b>Formulation :</b>	Liquid in PBS containing 50% glycerol, 0.5% BSA and 0.02% sodium azide.
<b>Source :</b>	Polyclonal, Rabbit,IgG
<b>Dilution :</b>	WB 1:500-2000;IHC 1:50-300
<b>Purification :</b>	The antibody was affinity-purified from rabbit antiserum by affinity-chromatography using epitope-specific immunogen.
<b>Concentration :</b>	1 mg/ml
<b>Storage Stability :</b>	-15°C to -25°C/1 year(Do not lower than -25°C)
<b>Observed Band :</b>	50kD

<b>Background :</b>	SEPT14 is a member of the highly conserved septin family of GTP-binding cytoskeletal proteins implicated in membrane transport, apoptosis, cell polarity, cell cycle regulation, cytokinesis, and other cellular functions (Peterson et al., 2007 [PubMed 17922164]).[supplied by OMIM, Jul 2008],
<b>Function :</b>	function:Involved in cytokinesis .,similarity:Belongs to the septin family.,
<b>Subcellular Location :</b>	Cytoplasm . Cytoplasm, cytoskeleton . Cell projection, axon . Cell projection, dendrite . Perikaryon . Cytoplasm, perinuclear region . Cytoplasmic vesicle, secretory vesicle, acrosome . Colocalizes with actin stress fibers (PubMed:17922164). Expressed in the perinuclear rim and manchette structure in early elongating spermatids during spermiogenesis (By similarity). .
<b>Expression :</b>	Testis-specific (at protein level).
<b>Sort :</b>	16233
<b>No4 :</b>	1
<b>Host :</b>	Rabbit
<b>Modifications :</b>	Unmodified

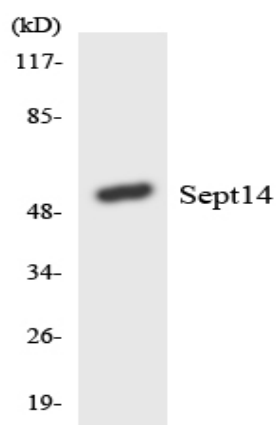
## Products Images



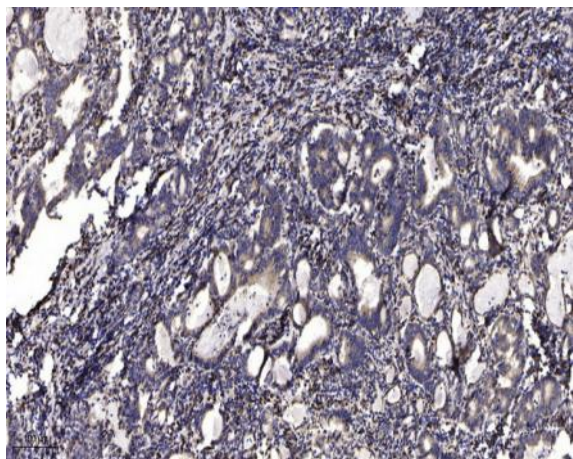
Western Blot analysis of 3T3 cells using Septin 14 Polyclonal Antibody



Western blot analysis of SEPT14 Antibody. The lane on the right is blocked with the SEPT14 peptide.



Western blot analysis of the lysates from Jurkat cells using SEPT14 antibody.



Immunohistochemical analysis of paraffin-embedded human Gastric adenocarcinoma. 1, Antibody was diluted at 1:200(4° overnight). 2, Tris-EDTA,pH9.0 was used for antigen retrieval. 3,Secondary antibody was diluted at 1:200(room temperature, 45min).