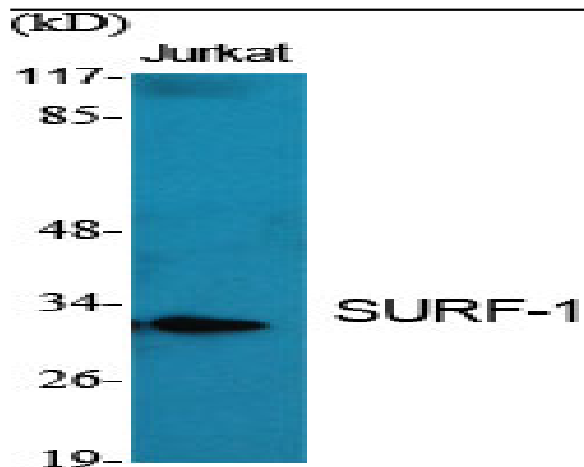


SURF-1 Polyclonal Antibody

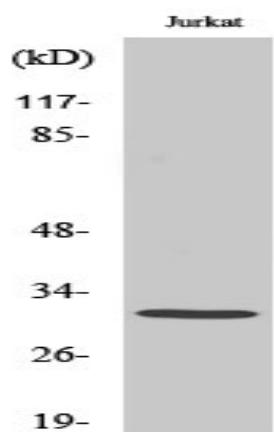
Catalog No :	YT4471
Reactivity :	Human;Mouse;Rat
Applications :	WB;IHC;IF;ELISA
Target :	SURF-1
Gene Name :	SURF1
Protein Name :	Surfeit locus protein 1
Human Gene Id :	6834
Human Swiss Prot No :	Q15526
Mouse Gene Id :	20930
Mouse Swiss Prot No :	P09925
Rat Gene Id :	64463
Rat Swiss Prot No :	Q9QXU2
Immunogen :	The antiserum was produced against synthesized peptide derived from human SURF1. AA range:171-220
Specificity :	SURF-1 Polyclonal Antibody detects endogenous levels of SURF-1 protein.
Formulation :	Liquid in PBS containing 50% glycerol, 0.5% BSA and 0.02% sodium azide.
Source :	Polyclonal, Rabbit,IgG
Dilution :	WB 1:500 - 1:2000. IHC 1:100 - 1:300. IF 1:200 - 1:1000. ELISA: 1:20000. Not yet tested in other applications.
Purification :	The antibody was affinity-purified from rabbit antiserum by affinity-chromatography using epitope-specific immunogen.

Concentration :	1 mg/ml
Storage Stability :	-15°C to -25°C/1 year(Do not lower than -25°C)
Observed Band :	30kD
Background :	<p>This gene encodes a protein localized to the inner mitochondrial membrane and thought to be involved in the biogenesis of the cytochrome c oxidase complex. The protein is a member of the SURF1 family, which includes the related yeast protein SHY1 and rickettsial protein RP733. The gene is located in the surf1 gene cluster, a group of very tightly linked genes that do not share sequence similarity, where it shares a bidirectional promoter with SURF2 on the opposite strand. Defects in this gene are a cause of Leigh syndrome, a severe neurological disorder that is commonly associated with systemic cytochrome c oxidase deficiency. [provided by RefSeq, Jul 2008],</p>
Function :	<p>disease:Defects in SURF1 are a cause of Leigh syndrome (LS) [MIM:256000]. LS is a severe neurological disorder characterized by bilaterally symmetrical necrotic lesions in subcortical brain regions that is commonly associated with systemic cytochrome c oxidase (COX) deficiency.,function:Probably involved in the biogenesis of the COX complex.,similarity:Belongs to the SURF1 family.,</p>
Subcellular Location :	Mitochondrion inner membrane ; Multi-pass membrane protein .
Expression :	Colon,Kidney,Skin,Stomach,
Sort :	16770
No4 :	1
Host :	Rabbit
Modifications :	Unmodified

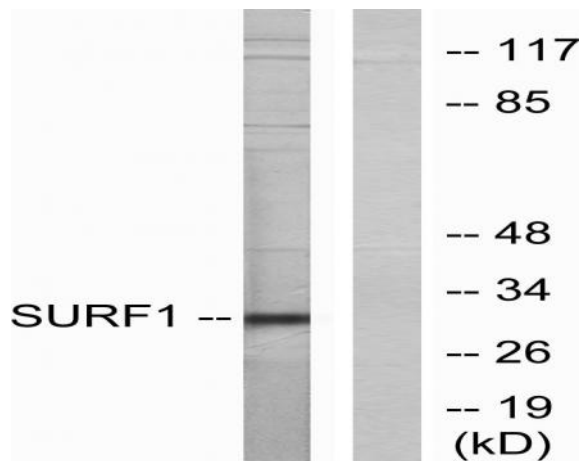
Products Images



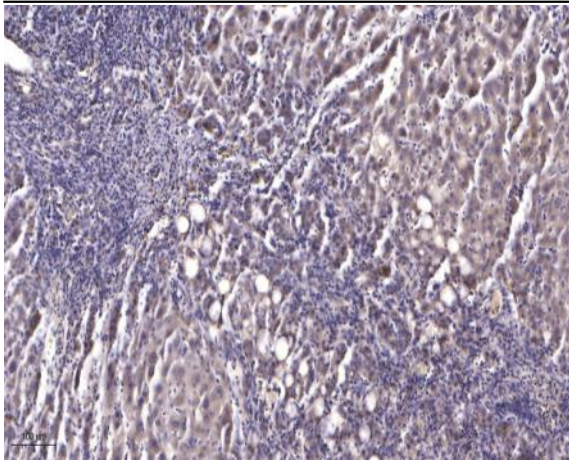
Western Blot analysis of various cells using SURF-1 Polyclonal Antibody



Western Blot analysis of Jurkat cells using SURF-1 Polyclonal Antibody



Western blot analysis of lysates from Jurkat cells, using SURF1 Antibody. The lane on the right is blocked with the synthesized peptide.



Immunohistochemical analysis of paraffin-embedded human liver cancer. 1, Antibody was diluted at 1:200(4° overnight). 2, Tris-EDTA,pH9.0 was used for antigen retrieval. 3,Secondary antibody was diluted at 1:200(room temperature, 45min).