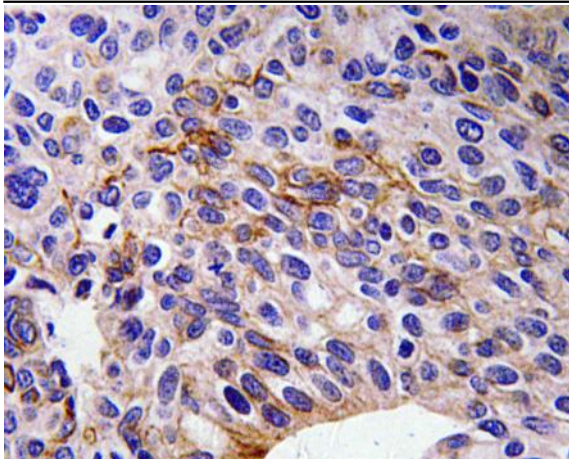


SEMA3A Polyclonal Antibody

Catalog No :	YT4232
Reactivity :	Human;Mouse;Rat
Applications :	IHC;IF;ELISA
Target :	SEMA3A
Fields :	>>Axon guidance
Gene Name :	SEMA3A
Protein Name :	Semaphorin-3A
Human Gene Id :	10371
Human Swiss Prot No :	Q14563
Mouse Gene Id :	20346
Mouse Swiss Prot No :	O08665
Rat Gene Id :	29751
Rat Swiss Prot No :	Q63548
Immunogen :	The antiserum was produced against synthesized peptide derived from human SEMA3A. AA range:688-737
Specificity :	SEMA3A Polyclonal Antibody detects endogenous levels of SEMA3A protein.
Formulation :	Liquid in PBS containing 50% glycerol, 0.5% BSA and 0.02% sodium azide.
Source :	Polyclonal, Rabbit,IgG
Dilution :	IHC 1:100 - 1:300. ELISA: 1:40000.. IF 1:50-200

Purification :	The antibody was affinity-purified from rabbit antiserum by affinity-chromatography using epitope-specific immunogen.
Concentration :	1 mg/ml
Storage Stability :	-15°C to -25°C/1 year(Do not lower than -25°C)
Molecularweight :	89kD
Cell Pathway :	Axon guidance;
Background :	This gene is a member of the semaphorin family and encodes a protein with an Ig-like C2-type (immunoglobulin-like) domain, a PSI domain and a Sema domain. This secreted protein can function as either a chemorepulsive agent, inhibiting axonal outgrowth, or as a chemoattractive agent, stimulating the growth of apical dendrites. In both cases, the protein is vital for normal neuronal pattern development. Increased expression of this protein is associated with schizophrenia and is seen in a variety of human tumor cell lines. Also, aberrant release of this protein is associated with the progression of Alzheimer's disease. [provided by RefSeq, Jul 2008],
Function :	domain:Strong binding to neuropilin is mediated by the carboxy third of the protein.,function:Induces the collapse and paralysis of neuronal growth cones. Could serve as a ligand that guides specific growth cones by a motility-inhibiting mechanism. Binds to the complex neuropilin-1/plexin-1.,similarity:Belongs to the semaphorin family.,similarity:Contains 1 Ig-like C2-type (immunoglobulin-like) domain.,similarity:Contains 1 PSI domain.,similarity:Contains 1 Sema domain.,
Subcellular Location :	Secreted .
Expression :	Expressed in the dorsal root ganglia.
Sort :	16215
No4 :	1
Host :	Rabbit
Modifications :	Unmodified

Products Images



Immunohistochemistry analysis of SEMA3A antibody in paraffin-embedded human tonsil tissue.