

## Sck Polyclonal Antibody

<b>Catalog No :</b>	YT4222
<b>Reactivity :</b>	Human;Rat
<b>Applications :</b>	WB;IHC
<b>Target :</b>	Sck
<b>Fields :</b>	>>EGFR tyrosine kinase inhibitor resistance;>>Endocrine resistance;>>ErbB signaling pathway;>>Ras signaling pathway;>>Chemokine signaling pathway;>>Phospholipase D signaling pathway;>>VEGF signaling pathway;>>Focal adhesion;>>Natural killer cell mediated cytotoxicity;>>Neurotrophin signaling pathway;>>Insulin signaling pathway;>>Estrogen signaling pathway;>>Prolactin signaling pathway;>>Relaxin signaling pathway;>>Growth hormone synthesis, secretion and action;>>Alcoholism;>>Bacterial invasion of epithelial cells;>>Glioma;>>Chronic myeloid leukemia;>>Breast cancer;>>Hepatocellular carcinoma;>>Gastric cancer
<b>Gene Name :</b>	SHC2
<b>Protein Name :</b>	SHC-transforming protein 2
<b>Human Gene Id :</b>	25759
<b>Human Swiss Prot No :</b>	P98077
<b>Mouse Swiss Prot No :</b>	Q8BMC3
<b>Rat Gene Id :</b>	314612
<b>Rat Swiss Prot No :</b>	O70142
<b>Immunogen :</b>	The antiserum was produced against synthesized peptide derived from human SHC2. AA range:261-310
<b>Specificity :</b>	Sck Polyclonal Antibody detects endogenous levels of Sck protein.
<b>Formulation :</b>	Liquid in PBS containing 50% glycerol, 0.5% BSA and 0.02% sodium azide.

<b>Source :</b>	Polyclonal, Rabbit,IgG
<b>Dilution :</b>	WB 1:500-2000;IHC 1:50-300
<b>Purification :</b>	The antibody was affinity-purified from rabbit antiserum by affinity-chromatography using epitope-specific immunogen.
<b>Concentration :</b>	1 mg/ml
<b>Storage Stability :</b>	-15°C to -25°C/1 year(Do not lower than -25°C)
<b>Observed Band :</b>	59kD
<b>Cell Pathway :</b>	ErbB_HER;Chemokine;VEGF;Focal adhesion;Natural killer cell mediated cytotoxicity;Neurotrophin;Insulin_Receptor;Glioma;Chronic myeloid leukemia;
<b>Background :</b>	domain:The PID domain mediates binding to the TrkA receptor.,function:Signaling adapter that couples activated growth factor receptors to signaling pathway in neurons. Involved in the signal transduction pathways of neurotrophin-activated Trk receptors in cortical neurons.,miscellaneous:PubMed:15057824 has shown that SHC2 is poorly phosphorylated by the Trk receptors, in opposite to PubMed:12006576.,PTM:Phosphorylated on tyrosines by the Trk receptors.,similarity:Contains 1 PID domain.,similarity:Contains 1 SH2 domain.,subunit:Interacts with the Trk receptors in a phosphotyrosine-dependent manner and MEGF12. Once activated, binds to GRB2.,tissue specificity:Expressed in brain. Expressed at high level in the hypothalamus and at low level in the caudate nucleus.,
<b>Function :</b>	domain:The PID domain mediates binding to the TrkA receptor.,function:Signaling adapter that couples activated growth factor receptors to signaling pathway in neurons. Involved in the signal transduction pathways of neurotrophin-activated Trk receptors in cortical neurons.,miscellaneous:PubMed:15057824 has shown that SHC2 is poorly phosphorylated by the Trk receptors, in opposite to PubMed:12006576.,PTM:Phosphorylated on tyrosines by the Trk receptors.,similarity:Contains 1 PID domain.,similarity:Contains 1 SH2 domain.,subunit:Interacts with the Trk receptors in a phosphotyrosine-dependent manner and MEGF12. Once activated, binds to GRB2.,tissue specificity:Expressed in brain. Expressed at high level in the hypothalamus and at low level in the caudate nucleus.,
<b>Subcellular Location :</b>	intracellular,cytosol,plasma membrane,
<b>Expression :</b>	Expressed in brain. Expressed at high level in the hypothalamus and at low level in the caudate nucleus.

---

**Sort :** 16176

---

**No4 :** 1

---

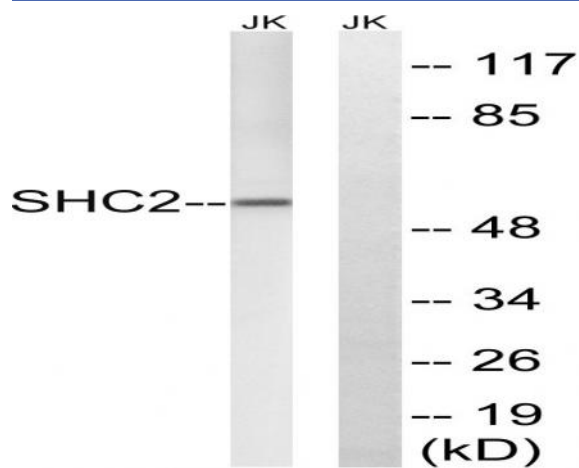
**Host :** Rabbit

---

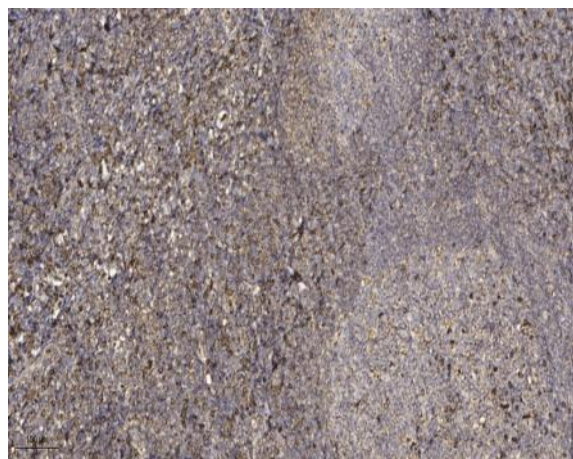
**Modifications :** Unmodified

---

## Products Images



Western blot analysis of lysates from Jurkat cells, using SHC2 Antibody. The lane on the right is blocked with the synthesized peptide.



Immunohistochemical analysis of paraffin-embedded human tonsil. 1, Antibody was diluted at 1:200(4° overnight). 2, Tris-EDTA,pH9.0 was used for antigen retrieval. 3,Secondary antibody was diluted at 1:200(room temperature, 45min).