

S2P Polyclonal Antibody

Catalog No :	YT4205
Reactivity :	Human;Mouse;Rat
Applications :	WB;IP;IF;ELISA
Target :	S2P
Fields :	>>Protein processing in endoplasmic reticulum
Gene Name :	MBTPS2
Protein Name :	Membrane-bound transcription factor site-2 protease
Human Gene Id :	51360
Human Swiss Prot No :	O43462
Mouse Gene Id :	270669
Mouse Swiss Prot No :	Q8CHX6
Immunogen :	The antiserum was produced against synthesized peptide derived from human MBTPS2. AA range:301-350
Specificity :	S2P Polyclonal Antibody detects endogenous levels of S2P protein.
Formulation :	Liquid in PBS containing 50% glycerol, 0.5% BSA and 0.02% sodium azide.
Source :	Polyclonal, Rabbit,IgG
Dilution :	WB 1:500-2000 IF 1:200 - 1:1000. ELISA: 1:20000. Not yet tested in other applications.
Purification :	The antibody was affinity-purified from rabbit antiserum by affinity-chromatography using epitope-specific immunogen.
Concentration :	1 mg/ml

Storage Stability : -15°C to -25°C/1 year(Do not lower than -25°C)

Molecularweight : 57kD

Background : This gene encodes a intramembrane zinc metalloprotease, which is essential in development. This protease functions in the signal protein activation involved in sterol control of transcription and the ER stress response. Mutations in this gene have been associated with ichthyosis follicularis with atrichia and photophobia (IFAP syndrome); IFAP syndrome has been quantitatively linked to a reduction in cholesterol homeostasis and ER stress response.[provided by RefSeq, Aug 2009],

Function : catalytic activity: Cleaves several transcription factors that are type-2 transmembrane proteins within membrane-spanning domains. Known substrates include sterol regulatory element-binding protein (SREBP) -1, SREBP-2 and forms of the transcriptional activator ATF6. SREBP-2 is cleaved at the site 477-DRSRILL-|CVLTFLCLSFNPLTSLQWGA-505. The residues Asn-Pro, 11 residues distal to the site of cleavage in the membrane-spanning domain, are important for cleavage by S2P endopeptidase. Replacement of either of these residues does not prevent cleavage, but there is no cleavage if both of these residues are replaced., cofactor: Binds 1 zinc ion per subunit., function: Intramembrane proteolysis of sterol-regulatory element-binding proteins (SREBPs) within the first transmembrane segment thereby releasing the N-terminal segment with a portion of the transmembrane segment attached. Site-2 cleavage com

Subcellular Location : Membrane ; Multi-pass membrane protein . Cytoplasm .

Expression : Expressed in heart, brain, placenta, lung, liver, muscle, kidney and pancreas.

Tag : orthogonal,hot,ip

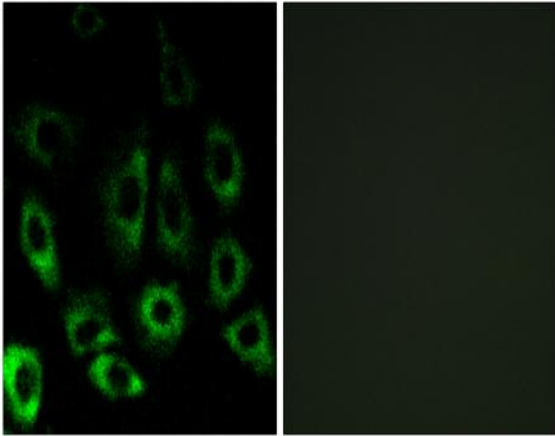
Sort : 14725

No4 : 1

Host : Rabbit

Modifications : Unmodified

Products Images



Immunofluorescence analysis of A549 cells, using MBTPS2 Antibody. The picture on the right is blocked with the synthesized peptide.