

S-100Z Polyclonal Antibody

Catalog No :	YT4204
Reactivity :	Human
Applications :	WB;IHC;IF;ELISA
Target :	S-100Z
Gene Name :	S100Z
Protein Name :	Protein S100-Z
Human Gene Id :	170591
Human Swiss Prot No :	Q8WXG8
Immunogen :	The antiserum was produced against synthesized peptide derived from human S100Z. AA range:2-51
Specificity :	S-100Z Polyclonal Antibody detects endogenous levels of S-100Z protein.
Formulation :	Liquid in PBS containing 50% glycerol, 0.5% BSA and 0.02% sodium azide.
Source :	Polyclonal, Rabbit,IgG
Dilution :	WB 1:500 - 1:2000. IHC 1:100 - 1:300. ELISA: 1:20000.. IF 1:50-200
Purification :	The antibody was affinity-purified from rabbit antiserum by affinity-chromatography using epitope-specific immunogen.
Concentration :	1 mg/ml
Storage Stability :	-15°C to -25°C/1 year(Do not lower than -25°C)
Observed Band :	12kD
Background :	Members of the S100 protein family contain 2 calcium-binding EF-hands and exhibit cell-type specific expression patterns. For additional background

information on S100 proteins, see MIM 114085.[supplied by OMIM, Mar 2008],

Function : miscellaneous:This protein binds two calcium ions.,similarity:Belongs to the S-100 family.,similarity:Contains 2 EF-hand domains.,subunit:Homodimer. Interacts with S100P.,tissue specificity:Highest level of expression in spleen and leukocytes.,

Expression : Highest level of expression in spleen and leukocytes.

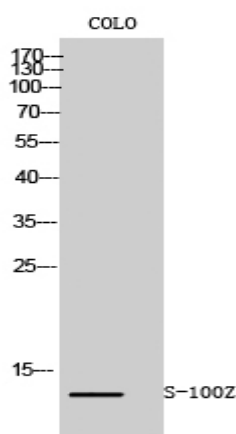
Sort : 14710

No4 : 1

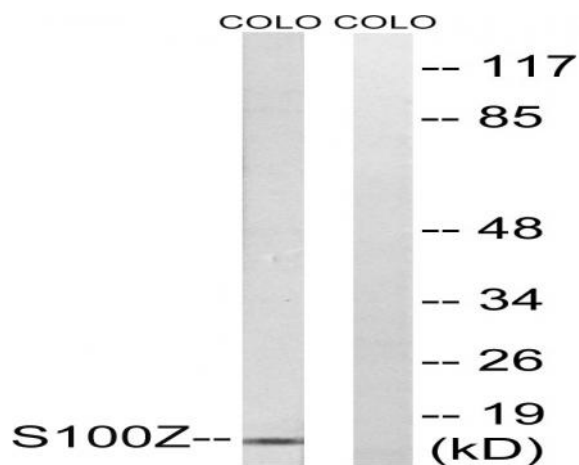
Host : Rabbit

Modifications : Unmodified

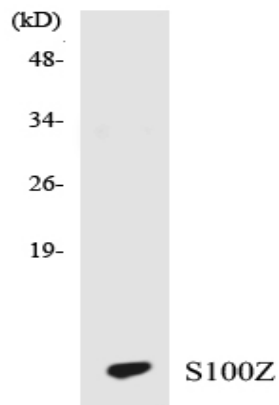
Products Images



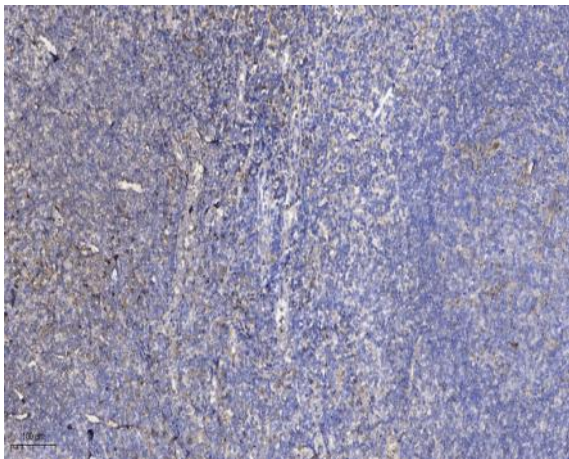
Western Blot analysis of COLO cells using S-100Z Polyclonal Antibody



Western blot analysis of lysates from COLO cells, using S100Z Antibody. The lane on the right is blocked with the synthesized peptide.



Western blot analysis of the lysates from HT-29 cells using S100Z antibody.



Immunohistochemical analysis of paraffin-embedded human tonsil. 1, Antibody was diluted at 1:200(4° overnight). 2, Tris-EDTA,pH9.0 was used for antigen retrieval. 3,Secondary antibody was diluted at 1:200(room temperature, 30min).