

## S-100P Polyclonal Antibody

<b>Catalog No :</b>	YT4203
<b>Reactivity :</b>	Human
<b>Applications :</b>	WB;IHC;IF;ELISA
<b>Target :</b>	S100P
<b>Gene Name :</b>	S100P
<b>Protein Name :</b>	Protein S100-P
<b>Human Gene Id :</b>	6286
<b>Human Swiss Prot No :</b>	P25815
<b>Immunogen :</b>	The antiserum was produced against synthesized peptide derived from human S100P. AA range:26-75
<b>Specificity :</b>	S-100P Polyclonal Antibody detects endogenous levels of S-100P protein.
<b>Formulation :</b>	Liquid in PBS containing 50% glycerol, 0.5% BSA and 0.02% sodium azide.
<b>Source :</b>	Polyclonal, Rabbit,IgG
<b>Dilution :</b>	WB 1:500 - 1:2000. IHC 1:100 - 1:300. ELISA: 1:20000.. IF 1:50-200
<b>Purification :</b>	The antibody was affinity-purified from rabbit antiserum by affinity-chromatography using epitope-specific immunogen.
<b>Concentration :</b>	1 mg/ml
<b>Storage Stability :</b>	-15°C to -25°C/1 year(Do not lower than -25°C)
<b>Observed Band :</b>	10kD
<b>Background :</b>	The protein encoded by this gene is a member of the S100 family of proteins containing 2 EF-hand calcium-binding motifs. S100 proteins are localized in the

cytoplasm and/or nucleus of a wide range of cells, and involved in the regulation of a number of cellular processes such as cell cycle progression and differentiation. S100 genes include at least 13 members which are located as a cluster on chromosome 1q21; however, this gene is located at 4p16. This protein, in addition to binding Ca<sup>2+</sup>, also binds Zn<sup>2+</sup> and Mg<sup>2+</sup>. This protein may play a role in the etiology of prostate cancer. [provided by RefSeq, Jul 2008],

**Function :**

miscellaneous:This protein binds two calcium ions.,similarity:Belongs to the S-100 family.,similarity:Contains 2 EF-hand domains.,subcellular location:Colocalizes with S100PBP in the nucleus.,subunit:Homodimer. Interacts with S100PBP and S100Z.,tissue specificity:Up-regulated in various pancreatic ductal adenocarcinomas and pancreatic intraepithelial neoplasias.,

**Subcellular Location :**

Nucleus. Cytoplasm. Cell projection, microvillus membrane. Colocalizes with S100PBP in the nucleus. Colocalizes with EZR in the microvilli in a calcium-dependent manner.

**Expression :**

Detected in all of the tissues except brain, testis and small intestine, expression level is higher in placenta, heart, lung, skeletal muscle, spleen and leukocyte. Up-regulated in various pancreatic ductal adenocarcinomas and pancreatic intraepithelial neoplasias.

**Sort :**

14709

**No4 :**

1

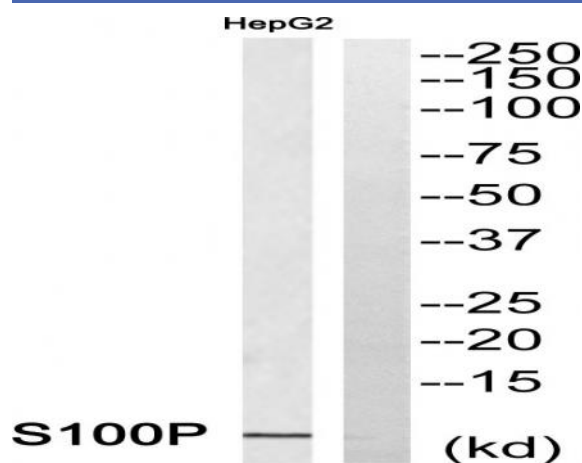
**Host :**

Rabbit

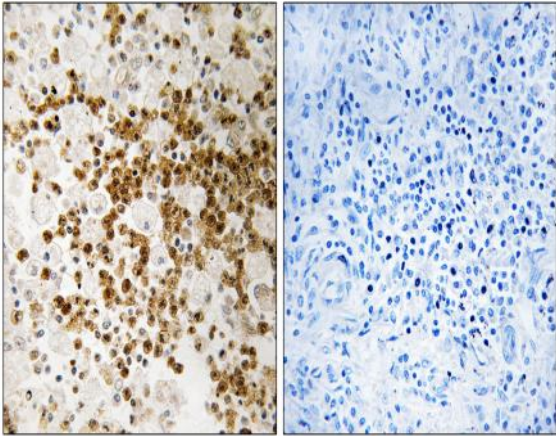
**Modifications :**

Unmodified

## Products Images



Western blot analysis of S100P Antibody. The lane on the right is blocked with the S100P peptide.



Immunohistochemistry analysis of paraffin-embedded human lung carcinoma, using S100P Antibody. The lane on the right is blocked with the S100P peptide.