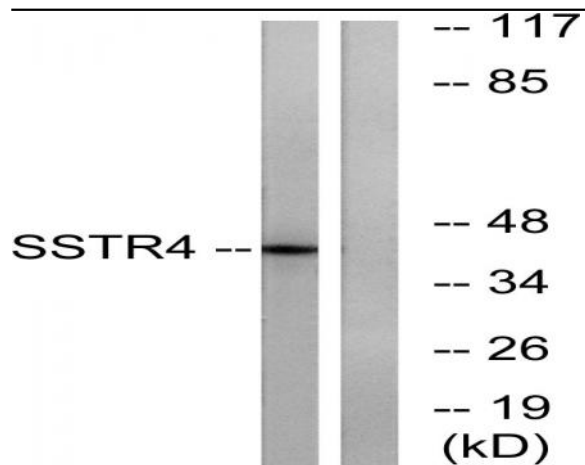


SSTR4 Polyclonal Antibody

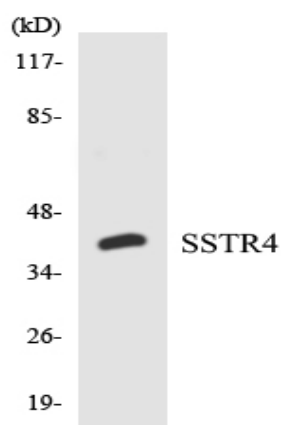
Catalog No :	YT4430
Reactivity :	Human;Mouse;Rat
Applications :	WB;ELISA
Target :	SSTR4
Fields :	>>Neuroactive ligand-receptor interaction
Gene Name :	SSTR4
Protein Name :	Somatostatin receptor type 4
Human Gene Id :	6754
Human Swiss Prot No :	P31391
Mouse Swiss Prot No :	P49660
Rat Gene Id :	25555
Rat Swiss Prot No :	P30937
Immunogen :	The antiserum was produced against synthesized peptide derived from human SSTR4. AA range:155-204
Specificity :	SSTR4 Polyclonal Antibody detects endogenous levels of SSTR4 protein.
Formulation :	Liquid in PBS containing 50% glycerol, 0.5% BSA and 0.02% sodium azide.
Source :	Polyclonal, Rabbit,IgG
Dilution :	WB 1:500 - 1:2000. ELISA: 1:20000. Not yet tested in other applications.
Purification :	The antibody was affinity-purified from rabbit antiserum by affinity-chromatography using epitope-specific immunogen.

Concentration :	1 mg/ml
Storage Stability :	-15°C to -25°C/1 year(Do not lower than -25°C)
Observed Band :	42kD
Cell Pathway :	Neuroactive ligand-receptor interaction;
Background :	Somatostatin acts at many sites to inhibit the release of many hormones and other secretory proteins. The biologic effects of somatostatin are probably mediated by a family of G protein-coupled receptors that are expressed in a tissue-specific manner. SSTR4 is a member of the superfamily of receptors having seven transmembrane segments and is expressed in highest levels in fetal and adult brain and lung. [provided by RefSeq, Jul 2008],
Function :	function:Receptor for somatostatin-14. The activity of this receptor is mediated by G proteins which inhibits adenylyl cyclase. It is functionally coupled not only to inhibition of adenylyl cyclase, but also to activation of both arachidonate release and mitogen-activated protein (MAP) kinase cascade. Mediates antiproliferative action of somatostatin in tumor cells.,similarity:Belongs to the G-protein coupled receptor 1 family.,tissue specificity:Specifically expressed in fetal and adult brain, lung tissue, stomach, and in lesser quantities in the kidney, pituitary and adrenals.,
Subcellular Location :	Cell membrane; Multi-pass membrane protein.
Expression :	Specifically expressed in fetal and adult brain, lung tissue, stomach, and in lesser quantities in the kidney, pituitary and adrenals.
Sort :	16641
No4 :	1
Host :	Rabbit
Modifications :	Unmodified

Products Images



Western blot analysis of lysates from LOVO cells, using SSTR4 Antibody. The lane on the right is blocked with the synthesized peptide.



Western blot analysis of the lysates from HepG2 cells using SSTR4 antibody.