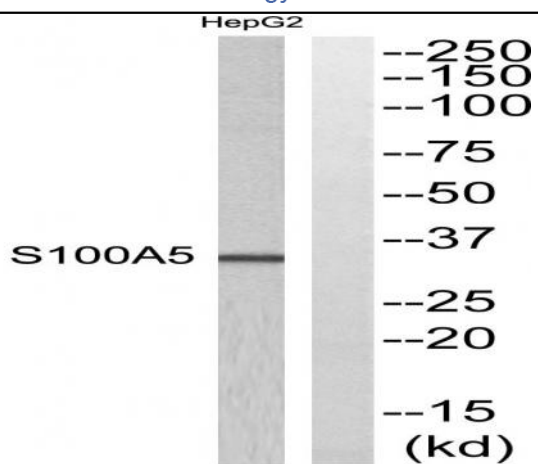


## S-100A5 Polyclonal Antibody

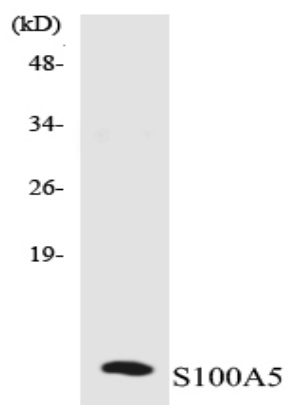
<b>Catalog No :</b>	YT4201
<b>Reactivity :</b>	Human;Mouse;Rat
<b>Applications :</b>	WB;ELISA
<b>Target :</b>	S-100A5
<b>Gene Name :</b>	S100A5
<b>Protein Name :</b>	Protein S100-A5
<b>Human Gene Id :</b>	6276
<b>Human Swiss Prot No :</b>	P33763
<b>Mouse Gene Id :</b>	20199
<b>Mouse Swiss Prot No :</b>	P63084
<b>Rat Gene Id :</b>	295211
<b>Rat Swiss Prot No :</b>	P63083
<b>Immunogen :</b>	The antiserum was produced against synthesized peptide derived from human S100A5. AA range:34-83
<b>Specificity :</b>	S-100A5 Polyclonal Antibody detects endogenous levels of S-100A5 protein.
<b>Formulation :</b>	Liquid in PBS containing 50% glycerol, 0.5% BSA and 0.02% sodium azide.
<b>Source :</b>	Polyclonal, Rabbit,IgG
<b>Dilution :</b>	WB 1:500 - 1:2000. ELISA: 1:20000. Not yet tested in other applications.
<b>Purification :</b>	The antibody was affinity-purified from rabbit antiserum by affinity-chromatography using epitope-specific immunogen.

<b>Concentration :</b>	1 mg/ml
<b>Storage Stability :</b>	-15°C to -25°C/1 year(Do not lower than -25°C)
<b>Observed Band :</b>	32kD
<b>Background :</b>	<p>S100 calcium binding protein A5(S100A5) Homo sapiens The protein encoded by this gene is a member of the S100 family of proteins containing 2 EF-hand calcium-binding motifs. S100 proteins are localized in the cytoplasm and/or nucleus of a wide range of cells, and involved in the regulation of a number of cellular processes such as cell cycle progression and differentiation. S100 genes include at least 13 members which are located as a cluster on chromosome 1q21. This protein has a Ca<sup>2+</sup> affinity 20- to 100-fold higher than the other S100 proteins studied under identical conditions. This protein also binds Zn<sup>2+</sup> and Cu<sup>2+</sup>, and Cu<sup>2+</sup> strongly which impairs the binding of Ca<sup>2+</sup>. This protein is expressed in very restricted regions of the adult brain. [provided by RefSeq, Jul 2008],</p>
<b>Function :</b>	similarity:Belongs to the S-100 family.,similarity:Contains 2 EF-hand domains.,
<b>Subcellular Location :</b>	nucleus,neuronal cell body,
<b>Expression :</b>	Brain,Kidney,
<b>Sort :</b>	14693
<b>No4 :</b>	1
<b>Host :</b>	Rabbit
<b>Modifications :</b>	Unmodified

## Products Images



Western blot analysis of S100A5 Antibody. The lane on the right is blocked with the S100A5 peptide.



Western blot analysis of the lysates from K562 cells using S100A5 antibody.