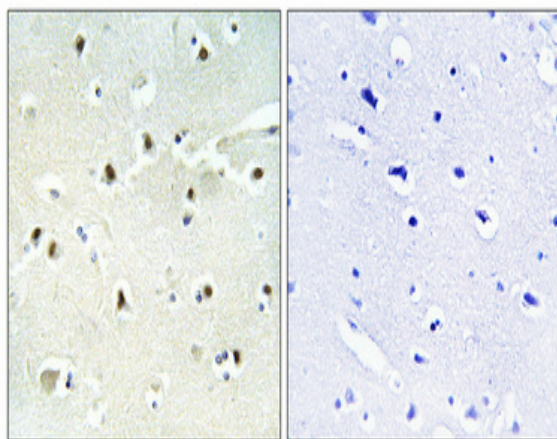


S-100A16 Polyclonal Antibody

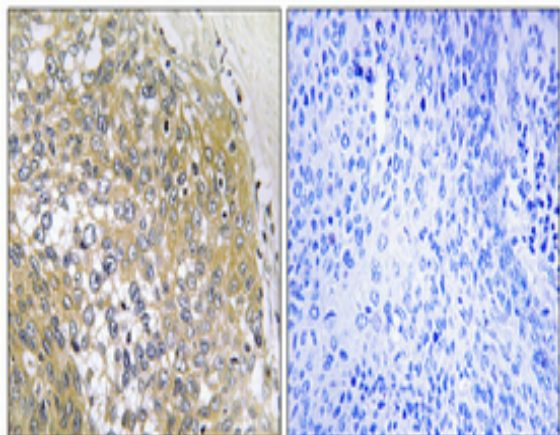
Catalog No :	YT4199
Reactivity :	Human;Rat
Applications :	WB;IHC;IF;ELISA
Target :	S-100A16
Gene Name :	S100A16
Protein Name :	Protein S100-A16
Human Gene Id :	140576
Human Swiss Prot No :	Q96FQ6
Immunogen :	The antiserum was produced against synthesized peptide derived from human S100A16. AA range:19-68
Specificity :	S-100A16 Polyclonal Antibody detects endogenous levels of S-100A16 protein.
Formulation :	Liquid in PBS containing 50% glycerol, 0.5% BSA and 0.02% sodium azide.
Source :	Polyclonal, Rabbit,IgG
Dilution :	WB 1:500 - 1:2000. IHC 1:100 - 1:300. ELISA: 1:40000.. IF 1:50-200
Purification :	The antibody was affinity-purified from rabbit antiserum by affinity-chromatography using epitope-specific immunogen.
Concentration :	1 mg/ml
Storage Stability :	-15°C to -25°C/1 year(Do not lower than -25°C)
Observed Band :	20kD
Background :	similarity:Belongs to the S-100 family.,similarity:Contains 2 EF-hand domains.,

Function :	<u>similarity:Belongs to the S-100 family.,similarity:Contains 2 EF-hand domains.,</u>
Subcellular Location :	<u>Nucleus, nucleolus . Cytoplasm . Primarily nucleolar. A high intracellular calcium level induces nucleolar exit and nucleocytoplasmic transport, whereas a low intracellular calcium level leads to nuclear translocation and accumulation within specific region of nucleoli (PubMed:17030513).</u>
Expression :	<u>Ubiquitous (PubMed:14684152). Highly expressed in esophagus, adipose tissues and colon. Expressed at lower level in lung, brain, pancreas and skeletal muscle. Expression is up-regulated in tumors of bladder, lung, thyroid gland, pancreas and ovary (PubMed:14684152). Expressed in astrocytes (PubMed:17030513).</u>
Sort :	<u>14686</u>
No4 :	<u>1</u>
Host :	<u>Rabbit</u>
Modifications :	<u>Unmodified</u>

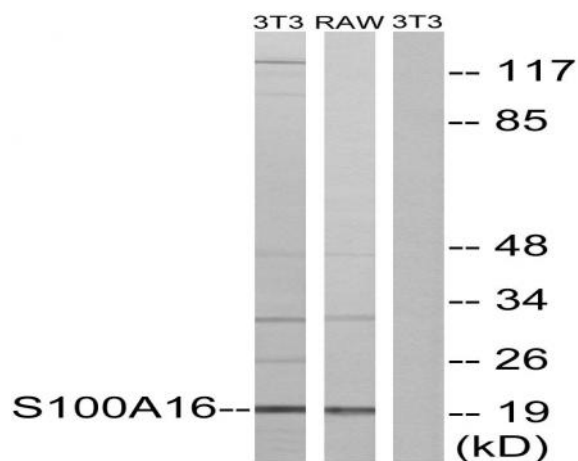
Products Images



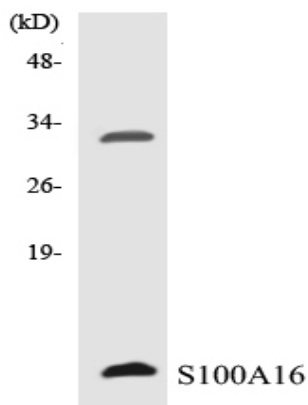
Immunohistochemical analysis of paraffin-embedded Human brain. Antibody was diluted at 1:100(4° overnight). High-pressure and temperature Tris-EDTA,pH8.0 was used for antigen retrieval. Negative contrl (right) obtaned from antibody was pre-absorbed by immunogen peptide.



Immunohistochemical analysis of paraffin-embedded Human cervix cancer. Antibody was diluted at 1:100(4 ° overnight). High-pressure and temperature Tris-EDTA,pH8.0 was used for antigen retrieval. Negative contrl (right) obtaned from antibody was pre-absorbed by immunogen peptide.



Western blot analysis of lysates from NIH/3T3 and RAW264.7 cells, using S100A16 Antibody. The lane on the right is blocked with the synthesized peptide.



Western blot analysis of the lysates from RAW264.7cells using S100A16 antibody.