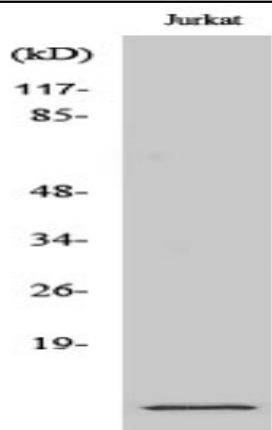


S-100A10 Polyclonal Antibody

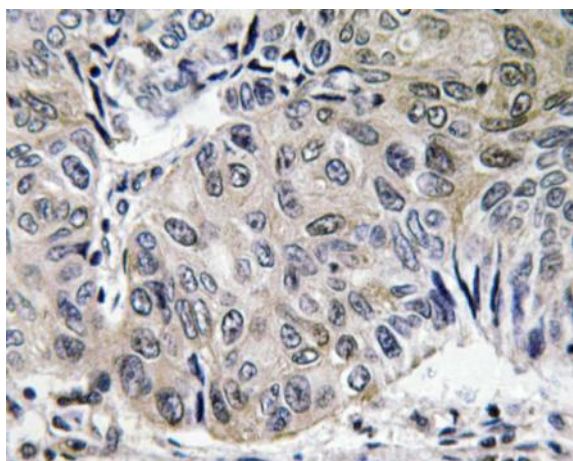
Catalog No :	YT4198
Reactivity :	Human;Mouse;Rat
Applications :	WB;IHC;IF;ELISA
Target :	S-100A10
Fields :	>>Salmonella infection
Gene Name :	S100A10
Protein Name :	Protein S100-A10
Human Gene Id :	6281
Human Swiss Prot No :	P60903
Mouse Gene Id :	20194
Mouse Swiss Prot No :	P08207
Rat Gene Id :	81778
Rat Swiss Prot No :	P05943
Immunogen :	The antiserum was produced against synthesized peptide derived from human S-100A10. AA range:3-52
Specificity :	S-100A10 Polyclonal Antibody detects endogenous levels of S-100A10 protein.
Formulation :	Liquid in PBS containing 50% glycerol, 0.5% BSA and 0.02% sodium azide.
Source :	Polyclonal, Rabbit,IgG
Dilution :	WB 1:500 - 1:2000. IHC 1:100 - 1:300. ELISA: 1:40000.. IF 1:50-200

Purification :	The antibody was affinity-purified from rabbit antiserum by affinity-chromatography using epitope-specific immunogen.
Concentration :	1 mg/ml
Storage Stability :	-15°C to -25°C/1 year(Do not lower than -25°C)
Observed Band :	11kD
Background :	The protein encoded by this gene is a member of the S100 family of proteins containing 2 EF-hand calcium-binding motifs. S100 proteins are localized in the cytoplasm and/or nucleus of a wide range of cells, and involved in the regulation of a number of cellular processes such as cell cycle progression and differentiation. S100 genes include at least 13 members which are located as a cluster on chromosome 1q21. This protein may function in exocytosis and endocytosis. [provided by RefSeq, Jul 2008],
Function :	function:Because S100A10 induces the dimerization of ANXA2/p36, it may function as a regulator of protein phosphorylation in that the ANXA2 monomer is the preferred target (in vitro) of tyrosine-specific kinase.,miscellaneous:Does not appear to bind calcium. Contains 2 ancestral calcium site related to EF-hand domains that have lost their ability to bind calcium.,similarity:Belongs to the S-100 family.,subunit:Heterotetramer containing 2 light chains of S100A10/p11 and 2 heavy chains of ANXA2/p36. Interacts with SCN10A.,
Subcellular Location :	integral component of membrane,extrinsic component of plasma membrane,membrane raft,extracellular exosome,
Expression :	Brain,Keratinocyte,
Tag :	orthogonal
Sort :	1
No4 :	1
Host :	Rabbit
Modifications :	Unmodified

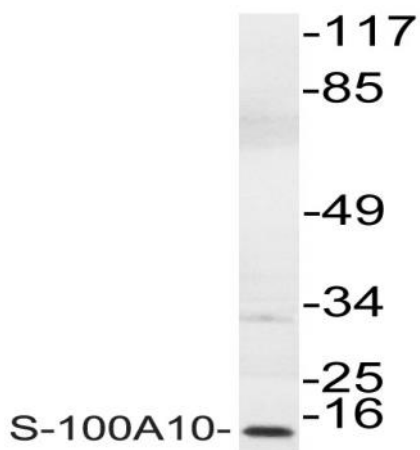
Products Images



Western Blot analysis of various cells using S-100A10 Polyclonal Antibody



Immunohistochemistry analysis of S-100A10 antibody in paraffin-embedded human lung carcinoma tissue.



Western blot analysis of lysate from COLO cells, using S-100A10 antibody.