

## RUFY1 Polyclonal Antibody

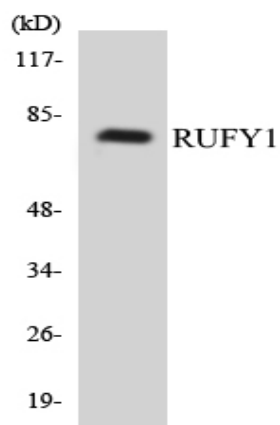
<b>Catalog No :</b>	YT4188
<b>Reactivity :</b>	Human;Mouse
<b>Applications :</b>	WB;ELISA
<b>Target :</b>	RUFY1
<b>Fields :</b>	>>Endocytosis
<b>Gene Name :</b>	RUFY1
<b>Protein Name :</b>	RUN and FYVE domain-containing protein 1
<b>Human Gene Id :</b>	80230
<b>Human Swiss Prot No :</b>	Q96T51
<b>Mouse Gene Id :</b>	216724
<b>Mouse Swiss Prot No :</b>	Q8BIJ7
<b>Immunogen :</b>	The antiserum was produced against synthesized peptide derived from human RUFY1. AA range:139-188
<b>Specificity :</b>	RUFY1 Polyclonal Antibody detects endogenous levels of RUFY1 protein.
<b>Formulation :</b>	Liquid in PBS containing 50% glycerol, 0.5% BSA and 0.02% sodium azide.
<b>Source :</b>	Polyclonal, Rabbit,IgG
<b>Dilution :</b>	WB 1:500 - 1:2000. ELISA: 1:10000. Not yet tested in other applications.
<b>Purification :</b>	The antibody was affinity-purified from rabbit antiserum by affinity-chromatography using epitope-specific immunogen.
<b>Concentration :</b>	1 mg/ml

---

<b>Storage Stability :</b>	-15°C to -25°C/1 year(Do not lower than -25°C)
<b>Observed Band :</b>	80kD
<b>Cell Pathway :</b>	Endocytosis;
<b>Background :</b>	<p>RUN and FYVE domain containing 1(RUFY1) Homo sapiens This gene encodes a protein that contains a RUN domain and a FYVE-type zinc finger domain. The encoded protein binds to phosphatidylinositol-3-phosphate (PI3P) and plays a role in early endosomal trafficking, tethering and fusion through interactions with small GTPases including Rab4, Rab5 and Rab14. Alternatively spliced transcript variants encoding multiple isoforms have been observed for this gene. [provided by RefSeq, Dec 2011],</p>
<b>Function :</b>	<p>domain:The FYVE-type zinc finger domain mediates interactions with phosphatidylinositol 3-phosphate.,function:Binds phospholipid vesicles containing phosphatidylinositol 3-phosphate and participates in early endosomal trafficking.,PTM:Phosphorylated upon DNA damage, probably by ATM or ATR.,PTM:Phosphorylation on Tyr-389 and/or Tyr-400 is required for interaction with BMX and endosomal targeting.,similarity:Contains 1 FYVE-type zinc finger.,similarity:Contains 1 RUN domain.,subunit:Interacts with BMX. May interact with SSB. Interacts with RAB4 and RAB5 that have been activated by GTP-binding.,tissue specificity:Broadly expressed, with highest levels in lung, testis, kidney and brain.,</p>
<b>Subcellular Location :</b>	Cytoplasm. Early endosome membrane; Peripheral membrane protein.
<b>Expression :</b>	Broadly expressed, with highest levels in lung, testis, kidney and brain.
<b>Sort :</b>	14647
<b>No4 :</b>	1
<b>Host :</b>	Rabbit
<b>Modifications :</b>	Unmodified

---

## Products Images



Western blot analysis of the lysates from HUVEC cells using RUFY1 antibody.