

## Rock-2 Polyclonal Antibody

<b>Catalog No :</b>	YT4163
<b>Reactivity :</b>	Human;Mouse;Rat;Monkey
<b>Applications :</b>	IF;WB;IHC;ELISA
<b>Target :</b>	Rock-2
<b>Fields :</b>	>>cGMP-PKG signaling pathway;>>cAMP signaling pathway;>>Chemokine signaling pathway;>>Sphingolipid signaling pathway;>>Vascular smooth muscle contraction;>>Wnt signaling pathway;>>Axon guidance;>>Focal adhesion;>>Tight junction;>>Platelet activation;>>Leukocyte transendothelial migration;>>Regulation of actin cytoskeleton;>>Oxytocin signaling pathway;>>Pathogenic Escherichia coli infection;>>Shigellosis;>>Salmonella infection;>>Yersinia infection;>>Human cytomegalovirus infection;>>Pathways in cancer;>>Proteoglycans in cancer;>>Lipid and atherosclerosis
<b>Gene Name :</b>	ROCK2
<b>Protein Name :</b>	Rho-associated protein kinase 2
<b>Human Gene Id :</b>	9475
<b>Human Swiss Prot No :</b>	O75116
<b>Mouse Gene Id :</b>	19878
<b>Mouse Swiss Prot No :</b>	P70336
<b>Rat Gene Id :</b>	25537
<b>Rat Swiss Prot No :</b>	Q62868
<b>Immunogen :</b>	The antiserum was produced against synthesized peptide derived from human ROCK2. AA range:691-740
<b>Specificity :</b>	Rock-2 Polyclonal Antibody detects endogenous levels of Rock-2 protein.  Liquid in PBS containing 50% glycerol, 0.5% BSA and 0.02% sodium azide.

<b>Formulation :</b>	Polyclonal, Rabbit,IgG
<b>Dilution :</b>	IF 1:50-200 WB 1:500 - 1:2000. IHC 1:100 - 1:300. Immunocytochemistry: 1:200 - 1:1000. ELISA: 1:20000. Not yet tested in other applications.
<b>Purification :</b>	The antibody was affinity-purified from rabbit antiserum by affinity-chromatography using epitope-specific immunogen.
<b>Concentration :</b>	1 mg/ml
<b>Storage Stability :</b>	-15°C to -25°C/1 year(Do not lower than -25°C)
<b>Observed Band :</b>	165kD
<b>Cell Pathway :</b>	Chemokine;Vascular smooth muscle contraction;WNT;WNT-T CELLTGF-beta;Axon guidance;Focal adhesion;Leukocyte transendothelial migration;Regulates Actin and Cytoskeleton;Pathogenic Escherichia coli infec
<b>Background :</b>	The protein encoded by this gene is a serine/threonine kinase that regulates cytokinesis, smooth muscle contraction, the formation of actin stress fibers and focal adhesions, and the activation of the c-fos serum response element. This protein, which is an isozyme of ROCK1 is a target for the small GTPase Rho. [provided by RefSeq, Jul 2008],
<b>Function :</b>	catalytic activity:ATP + a protein = ADP + a phosphoprotein.,enzyme regulation:Activated by RHOA binding.,function:Protein kinase that phosphorylates a large number of important signaling proteins, and thereby regulates the assembly of the actin cytoskeleton. Promotes formation of stress fibers and of focal adhesion complexes. Plays a role in smooth muscle contraction.,miscellaneous:Inhibited by Y-27632.,PTM:Phosphorylated upon DNA damage, probably by ATM or ATR.,similarity:Belongs to the protein kinase superfamily. AGC Ser/Thr protein kinase family.,similarity:Contains 1 AGC-kinase C-terminal domain.,similarity:Contains 1 PH domain.,similarity:Contains 1 phorbol-ester/DAG-type zinc finger.,similarity:Contains 1 protein kinase domain.,similarity:Contains 1 REM (Hr1) repeat.,subcellular location:Cytoplasmic, and associated with actin microfilaments and the plasma membrane.,subunit:Homodim
<b>Subcellular Location :</b>	Cytoplasm. Cell membrane ; Peripheral membrane protein . Nucleus. Cytoplasm, cytoskeleton, microtubule organizing center, centrosome. Cytoplasmic, and associated with actin microfilaments and the plasma membrane. .
<b>Expression :</b>	Expressed in the brain (at protein level).
<b>Tag :</b>	orthogonal

---

**Sort :** 14571

---

**No4 :** 1

---

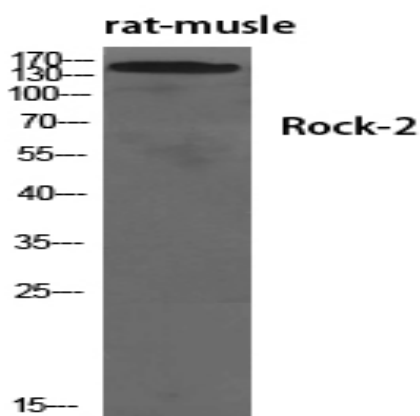
**Host :** Rabbit

---

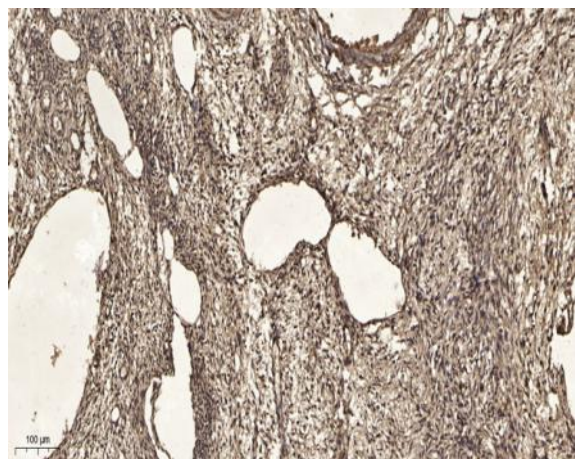
**Modifications :** Unmodified

---

## Products Images



Western Blot analysis of various cells using Rock-2 Polyclonal Antibody diluted at 1:1000



Immunohistochemical analysis of paraffin-embedded human oophoroma. 1, Antibody was diluted at 1:200(4° overnight). 2, Tris-EDTA,pH9.0 was used for antigen retrieval. 3,Secondary antibody was diluted at 1:200(room temperature, 45min).