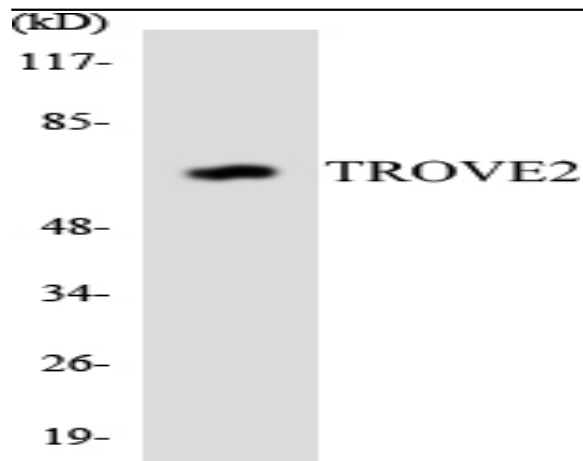


RO60 Polyclonal Antibody

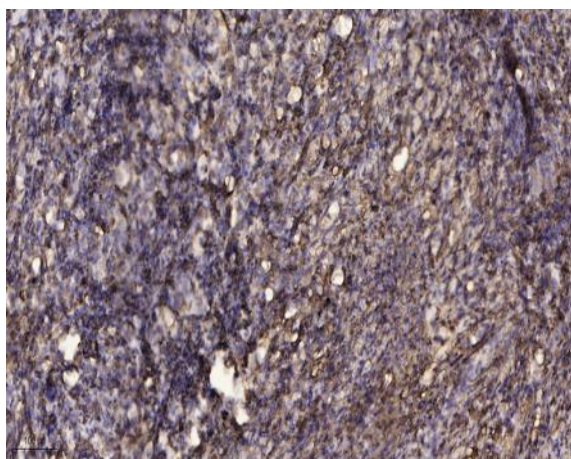
Catalog No :	YT4159
Reactivity :	Human;Mouse
Applications :	WB;IHC
Target :	RO60
Fields :	>>Systemic lupus erythematosus
Gene Name :	TROVE2
Protein Name :	60 kDa SS-A/Ro ribonucleoprotein
Human Gene Id :	6738
Human Swiss Prot No :	P10155
Mouse Swiss Prot No :	O08848
Immunogen :	The antiserum was produced against synthesized peptide derived from human TROVE2. AA range:311-360
Specificity :	RO60 Polyclonal Antibody detects endogenous levels of RO60 protein.
Formulation :	Liquid in PBS containing 50% glycerol, 0.5% BSA and 0.02% sodium azide.
Source :	Polyclonal, Rabbit,IgG
Dilution :	WB 1:500-2000;IHC 1:50-300
Purification :	The antibody was affinity-purified from rabbit antiserum by affinity-chromatography using epitope-specific immunogen.
Concentration :	1 mg/ml
Storage Stability :	-15°C to -25°C/1 year(Do not lower than -25°C)

Observed Band :	70kD
Cell Pathway :	Systemic lupus erythematosus;
Background :	disease:Sera from patients with systemic lupus erythematosus (SLE) often contain antibodies that react with the normal cellular SSA2 protein as if this antigen was foreign.,function:RNA-binding protein that binds to several small cytoplasmic RNA molecules known as Y RNAs. May stabilize these RNAs from degradation.,PTM:Phosphorylated upon DNA damage, probably by ATM or ATR.,similarity:Belongs to the Ro 60 kDa family.,similarity:Contains 1 TROVE domain.,subunit:Found in a complex with PUF60 and Y5 RNA. Interacts with RIP11.,
Function :	disease:Sera from patients with systemic lupus erythematosus (SLE) often contain antibodies that react with the normal cellular SSA2 protein as if this antigen was foreign.,function:RNA-binding protein that binds to several small cytoplasmic RNA molecules known as Y RNAs. May stabilize these RNAs from degradation.,PTM:Phosphorylated upon DNA damage, probably by ATM or ATR.,similarity:Belongs to the Ro 60 kDa family.,similarity:Contains 1 TROVE domain.,subunit:Found in a complex with PUF60 and Y5 RNA. Interacts with RIP11.,
Subcellular Location :	Cytoplasm . Localized in cytoplasmic mRNP granules containing untranslated mRNAs. .
Expression :	Keratinocyte,Pre-B cell,Testis,
Sort :	14566
No4 :	1
Host :	Rabbit
Modifications :	Unmodified

Products Images



Western blot analysis of the lysates from HepG2 cells using TROVE2 antibody.



Immunohistochemical analysis of paraffin-embedded human Squamous cell carcinoma of lung. 1, Antibody was diluted at 1:200(4° overnight). 2, Tris-EDTA,pH9.0 was used for antigen retrieval. 3,Secondary antibody was diluted at 1:200(room temperature, 45min).