

RN-tre Polyclonal Antibody

Catalog No :	YT4158
Reactivity :	Human;Mouse
Applications :	IHC;IF;ELISA
Target :	RN-tre
Gene Name :	USP6NL
Protein Name :	USP6 N-terminal-like protein
Human Gene Id :	9712
Human Swiss Prot No :	Q92738
Mouse Swiss Prot No :	Q80XC3
Immunogen :	The antiserum was produced against synthesized peptide derived from human USP6NL. AA range:451-500
Specificity :	RN-tre Polyclonal Antibody detects endogenous levels of RN-tre protein.
Formulation :	Liquid in PBS containing 50% glycerol, 0.5% BSA and 0.02% sodium azide.
Source :	Polyclonal, Rabbit,IgG
Dilution :	IHC 1:100 - 1:300. ELISA: 1:10000.. IF 1:50-200
Purification :	The antibody was affinity-purified from rabbit antiserum by affinity-chromatography using epitope-specific immunogen.
Concentration :	1 mg/ml
Storage Stability :	-15°C to -25°C/1 year(Do not lower than -25°C)
Molecularweight :	94kD

Background : function:Acts as a GTPase-activating protein for RAB5A. Involved in receptor trafficking. In complex with EPS8 inhibits internalization of EGFR.,PTM:Phosphorylated upon DNA damage, probably by ATM or ATR.,similarity:Contains 1 Rab-GAP TBC domain.,subunit:Interacts with EPS8.,tissue specificity:Widely expressed.,

Function : function:Acts as a GTPase-activating protein for RAB5A. Involved in receptor trafficking. In complex with EPS8 inhibits internalization of EGFR.,PTM:Phosphorylated upon DNA damage, probably by ATM or ATR.,similarity:Contains 1 Rab-GAP TBC domain.,subunit:Interacts with EPS8.,tissue specificity:Widely expressed.,

Subcellular Location : Golgi apparatus. Cytoplasmic vesicle.

Expression : Widely expressed.

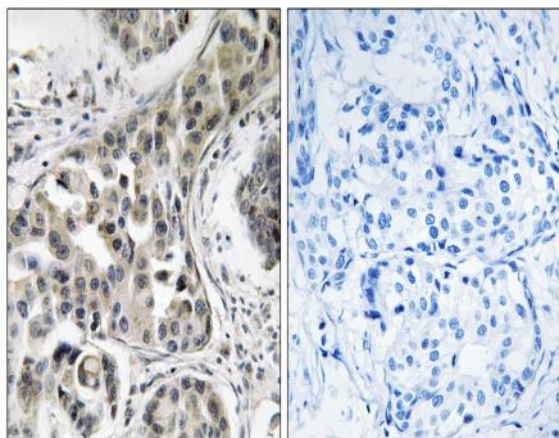
Sort : 14565

No4 : 1

Host : Rabbit

Modifications : Unmodified

Products Images



Immunohistochemistry analysis of paraffin-embedded human breast carcinoma, using USP6NL Antibody. The picture on the right is blocked with the synthesized peptide.