

RNF15 Polyclonal Antibody

Catalog No :	YT4157
Reactivity :	Human;Mouse
Applications :	WB;IHC
Target :	RNF15
Gene Name :	TRIM38
Protein Name :	Tripartite motif-containing protein 38
Human Gene Id :	10475
Human Swiss Prot No :	O00635
Immunogen :	The antiserum was produced against synthesized peptide derived from human TRIM38. AA range:161-210
Specificity :	RNF15 Polyclonal Antibody detects endogenous levels of RNF15 protein.
Formulation :	Liquid in PBS containing 50% glycerol, 0.5% BSA and 0.02% sodium azide.
Source :	Polyclonal, Rabbit,IgG
Dilution :	WB 1:500-2000;IHC 1:50-300
Purification :	The antibody was affinity-purified from rabbit antiserum by affinity-chromatography using epitope-specific immunogen.
Concentration :	1 mg/ml
Storage Stability :	-15°C to -25°C/1 year(Do not lower than -25°C)
Observed Band :	58kD
Background :	This gene encodes a member of the tripartite motif (TRIM) family. The encoded protein contains a RING-type zinc finger, B box-type zinc finger and SPRY

domain. The function of this protein has not been identified. A pseudogene of this gene is located on the long arm of chromosome 4. [provided by RefSeq, Jul 2012],

Function :

similarity:Contains 1 B box-type zinc finger.,similarity:Contains 1 B30.2/SPRY domain.,similarity:Contains 1 RING-type zinc finger.,tissue specificity:Ubiquitous.,

Subcellular Location :

Cytoplasm .

Expression :

Ubiquitous.

Sort :

14560

No4 :

1

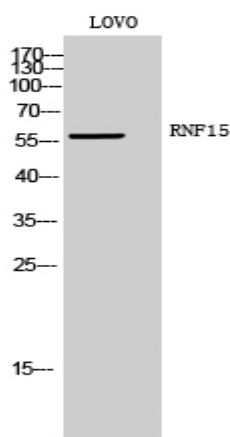
Host :

Rabbit

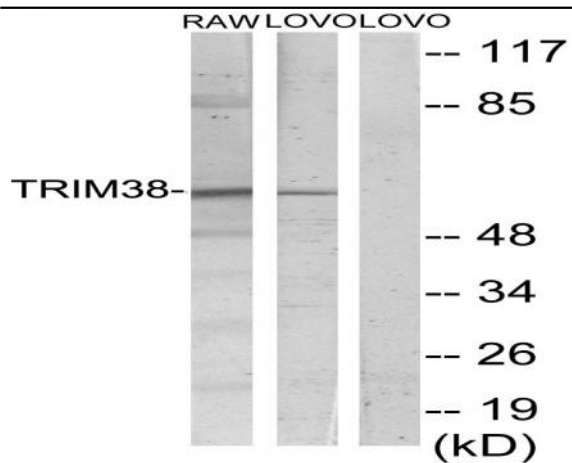
Modifications :

Unmodified

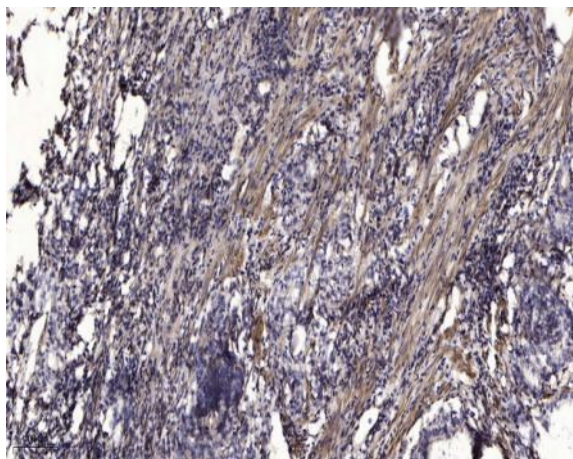
Products Images



Western Blot analysis of LOVO cells using RNF15 Polyclonal Antibody



Western blot analysis of lysates from LOVO and RAW264.7 cells, using TRIM38 Antibody. The lane on the right is blocked with the synthesized peptide.



Immunohistochemical analysis of paraffin-embedded human Gastric adenocarcinoma. 1, Antibody was diluted at 1:200(4° overnight). 2, Tris-EDTA,pH9.0 was used for antigen retrieval. 3,Secondary antibody was diluted at 1:200(room temperature, 45min).