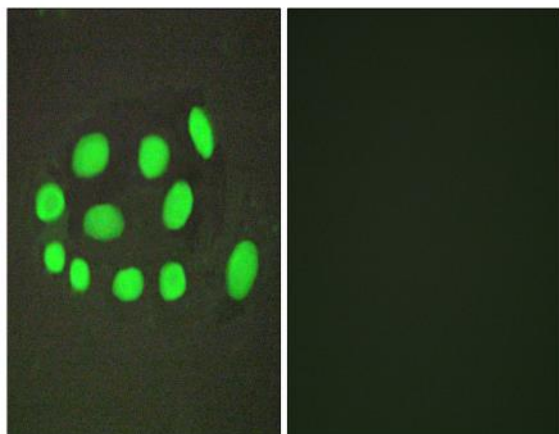


## SPZ1 Polyclonal Antibody

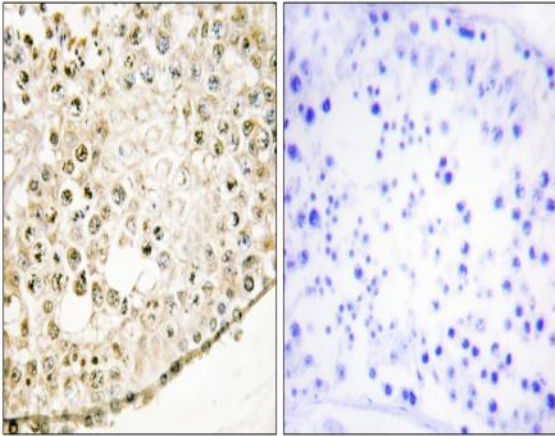
<b>Catalog No :</b>	YT4390
<b>Reactivity :</b>	Human;Rat;Mouse;
<b>Applications :</b>	IHC;IF;WB;ELISA
<b>Target :</b>	SPZ1
<b>Gene Name :</b>	SPZ1
<b>Protein Name :</b>	Spermatogenic leucine zipper protein 1
<b>Human Gene Id :</b>	84654
<b>Human Swiss Prot No :</b>	Q9BXG8
<b>Mouse Swiss Prot No :</b>	Q99MY0
<b>Immunogen :</b>	The antiserum was produced against synthesized peptide derived from human SPZ1. AA range:111-160
<b>Specificity :</b>	SPZ1 Polyclonal Antibody detects endogenous levels of SPZ1 protein.
<b>Formulation :</b>	Liquid in PBS containing 50% glycerol, 0.5% BSA and 0.02% sodium azide.
<b>Source :</b>	Polyclonal, Rabbit,IgG
<b>Dilution :</b>	WB 1:500-2000 IHC 1:100 - 1:300. IF 1:200 - 1:1000. ELISA: 1:20000. Not yet tested in other applications.
<b>Purification :</b>	The antibody was affinity-purified from rabbit antiserum by affinity-chromatography using epitope-specific immunogen.
<b>Concentration :</b>	1 mg/ml
<b>Storage Stability :</b>	-15°C to -25°C/1 year(Do not lower than -25°C)
<b>Observed Band :</b>	133kD

<b>Background :</b>	This gene encodes a bHLH-zip transcription factor which functions in the mitogen-activate protein kinase (MAPK) signaling pathway. Because of its role in the upregulation of cell proliferation and tumorigenesis, this gene may serve as a target for Ras-induced tumor treatments. [provided by RefSeq, Oct 2011],
<b>Function :</b>	function:Transcription factor that binds to the DNA sequence 5'-CANNTG-3'(E box) and the G-box motif. May play an important role in the regulation of cell proliferation and differentiation during spermatogenesis.,PTM:Phosphorylated by ERK1 and ERK2.,similarity:Contains 1 basic helix-loop-helix (bHLH) domain.,subunit:Interacts with PPP1CC isoform gamma-2.,tissue specificity:Specifically and strongly expressed in the testis. Expressed in several tumor cell lines.,
<b>Subcellular Location :</b>	Cytoplasm . Nucleus .
<b>Expression :</b>	Specifically and strongly expressed in the testis. Expressed in several tumor cell lines.
<b>Sort :</b>	16568
<b>No4 :</b>	1
<b>Host :</b>	Rabbit
<b>Modifications :</b>	Unmodified

## Products Images



Immunofluorescence analysis of A549 cells, using SPZ1 Antibody. The picture on the right is blocked with the synthesized peptide.



Immunohistochemistry analysis of paraffin-embedded human testis tissue, using SPZ1 Antibody. The picture on the right is blocked with the synthesized peptide.