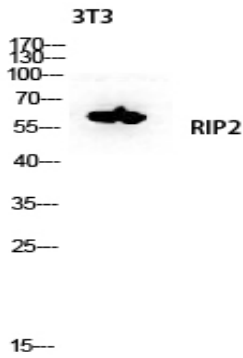


RIP2 Polyclonal Antibody

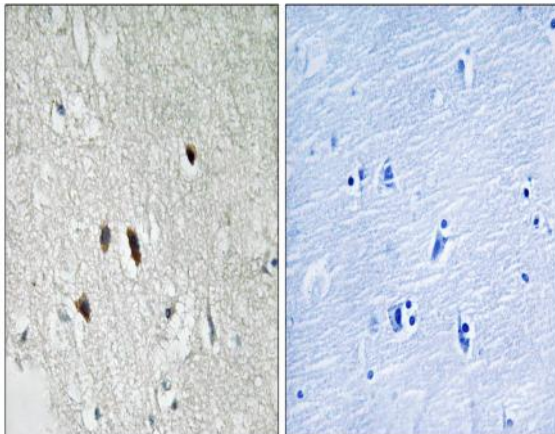
Catalog No :	YT4147
Reactivity :	Human;Mouse
Applications :	WB;IHC;IF;ELISA
Target :	RIP2
Fields :	>>NOD-like receptor signaling pathway;>>Neurotrophin signaling pathway;>>Shigellosis;>>Salmonella infection;>>Tuberculosis
Gene Name :	RIPK2
Protein Name :	Receptor-interacting serine/threonine-protein kinase 2
Human Gene Id :	8767
Human Swiss Prot No :	O43353
Mouse Gene Id :	192656
Mouse Swiss Prot No :	P58801
Immunogen :	The antiserum was produced against synthesized peptide derived from human RIPK2. AA range:146-195
Specificity :	RIP2 Polyclonal Antibody detects endogenous levels of RIP2 protein.
Formulation :	Liquid in PBS containing 50% glycerol, 0.5% BSA and 0.02% sodium azide.
Source :	Polyclonal, Rabbit,IgG
Dilution :	WB 1:500 - 1:2000. IHC 1:100 - 1:300. ELISA: 1:40000.. IF 1:50-200
Purification :	The antibody was affinity-purified from rabbit antiserum by affinity-chromatography using epitope-specific immunogen.
Concentration :	1 mg/ml

Storage Stability :	-15°C to -25°C/1 year(Do not lower than -25°C)
Observed Band :	61kD
Cell Pathway :	NOD-like receptor;Neurotrophin;
Background :	This gene encodes a member of the receptor-interacting protein (RIP) family of serine/threonine protein kinases. The encoded protein contains a C-terminal caspase activation and recruitment domain (CARD), and is a component of signaling complexes in both the innate and adaptive immune pathways. It is a potent activator of NF-kappaB and inducer of apoptosis in response to various stimuli. [provided by RefSeq, Jul 2008],
Function :	catalytic activity:ATP + a protein = ADP + a phosphoprotein.,function:Activates pro-caspase-1 and pro-caspase-8. Potentiates CASP8-mediated apoptosis. Activates NF-kappa-B.,PTM:Autophosphorylated. Phosphorylated upon DNA damage, probably by ATM or ATR.,similarity:Belongs to the protein kinase superfamily. TKL Ser/Thr protein kinase family.,similarity:Contains 1 CARD domain.,similarity:Contains 1 protein kinase domain.,subunit:Binds to CFLAR/CLARP and CASP1 via their CARD domains. Binds to BIRC3/c-IAP1 and BIRC2/c-IAP2, TRAF1, TRAF2, TRAF5 and TRAF6. May be a component of both the TNFRSF1A and TNFRSF5/CD40 receptor complex.,tissue specificity:Detected in heart, brain, placenta, lung, peripheral blood leukocytes, spleen, kidney, testis, prostate, pancreas and lymph node.,
Subcellular Location :	Cytoplasm .
Expression :	Detected in heart, brain, placenta, lung, peripheral blood leukocytes, spleen, kidney, testis, prostate, pancreas and lymph node.
Tag :	hot
Sort :	14530
No4 :	1
Host :	Rabbit
Modifications :	Unmodified

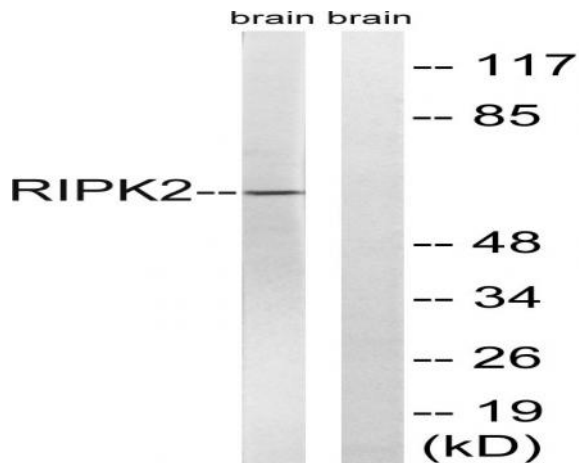
Products Images



Western blot analysis of 3T3 lysis using RIP2 antibody. Antibody was diluted at 1:500



Immunohistochemistry analysis of paraffin-embedded human brain tissue, using RIPK2 Antibody. The picture on the right is blocked with the synthesized peptide.



Western blot analysis of lysates from rat brain cells, using RIPK2 Antibody. The lane on the right is blocked with the synthesized peptide.